



Ministry of Education, Sports, Youth
and Gender Affairs

Antigua and Barbuda

Educational Statistical Digest 2012



Acknowledgements

The Antigua and Barbuda Educational Statistical Digest 2012
Ministry of Education, Sports, Youth and Gender Affairs

Statistics and compilation:
Mrs. Priscilla Nicholas
Dr. Patricia George

Comments and other suggestions:
Ms. Jessie George
Mr. Melorne Mack

Produced out of:
The Planning Unit
Ministry of Education
Government Complex
Queen Elizabeth Highway
St. John's

Questions/queries: 562-4428

Cover photos:
Top: Five Islands Primary School students – Entering classroom after lunch
Bottom (L – R): Boys' 1500 m – Antigua and Barbuda Interschool Sports 2011
Golden Grove Primary School – Shared Reading 2011
St. John's Catholic Primary School – Independence Youth Rally 2010

Produced: February 2012

Preface

The Ministry of Education, Youth, Sports and Gender Affairs is extremely grateful to those schools that have submitted data to the Planning Unit in a timely manner. The data collected and compiled have proved to be very valuable in the process of planning and decision making with regards to educational issues.

This Digest is intended to provide information to local, regional and international organizations, as well as private individuals with an interest in Educational Statistics. It is hoped that all who use this Digest may find it informative and beneficial.

This Digest covers the following:

- ✂ Information on teachers present in classrooms;
- ✂ Enrolment statistics for the school years 2010-11 and 2011-12;
- ✂ Trends in enrolment for available years to present;
- ✂ Data on uptake of social safety net programmes in Education;
- ✂ Statistics on Examinations (national and regional) for 2010 and 2011;
- ✂ Trends in Examination results for available years to present

Table of Contents

Acknowledgements	1
Preface	2
Table of Contents	3
List of Tables	4
List of Figures	6
1. General Information on Primary and Secondary Schools	7
2. Statistical Information on Teachers	10
2.1 Teachers Present in Schools	10
2.2 Age and Years of Experience of Teachers in Government Schools	15
2.3 Teacher Attendance Rates	18
3. Statistical Information on Student Enrolment and Wastage in Schools	19
3.1 Enrolment in Pre-Primary Education: Day-Care/Crèche Facilities and Pre-Schools 2010-11	19
3.2 Student Enrolment in All Primary, Junior Secondary and Secondary Schools	20
3.2-1 Primary Schools	21
3.2-2 Junior Secondary Schools	33
3.2-3 Secondary Schools	34
3.2-4 Other General Information on Student Enrolment across Pre-K, Primary and Secondary Schools	37
3.3 Non-National Enrolment in Primary and Secondary Schools	41
3.4 Trends in Enrolment across Primary and Secondary Schooling	42
3.5 Student Attendance Rates	48
3.6 Wastage (Repetition and Dropout Rates) in Primary and Secondary Schools	49
3.7 Social Safety Net Programmes in Schools	52
3.7-1 The School Meals Programme	52
3.7-2 The Schools' Uniform Programme	53
3.7-3 Estimates of Public Spending on Education	54
4. Results of Examinations	55
4.1 The Grades 2 and 4 National Assessments 2010 and 2011	55
4.1-1 National Assessments 2010	55
4.1-2 National Assessments 2011	59
4.2 The Common Entrance Examinations 2010 and 2011	62
4.2-1 CEE 2010	62
4.2-2 CEE 2011	65

4.3 CXC’s Caribbean Certificate of Secondary Level Competency	69
4.4 CXC’s CSEC Examinations 2010 and 2011	70
4.4-1 CSEC 2010	71
4.4-2 CSEC 2011	78

List of Tables

<i>Table 1.1: Listing of Schools in Antigua and Barbuda as at beginning School Year 2011-12</i>	8
<i>Table 2.1-1: Categories of Teachers</i>	10
<i>Table 2.1-2: Categories of Teachers in the Government Schools 2010-11</i>	10
<i>Table 2.1-3: Zone 1 Government Schools Categories of Teachers</i>	11
<i>Table 2.1-4: Zone 2 Government Schools Categories of Teachers</i>	11
<i>Table 2.1-5: Zone 3 Government Schools Categories of Teachers</i>	12
<i>Table 2.1-6: Zone 4 Government Schools Categories of Teachers</i>	12
<i>Table 2.1-7: Secondary Schools Categories of Teachers</i>	13
<i>Table 2.1-9: Teachers by Gender and Status in All Private Primary and Secondary Schools 2010-11</i>	14
<i>Table 2.1-10: Percentage Trained Teachers in Schools 2007-08 to 2010-11</i>	14
<i>Table 2.3-1: Teacher Attendance Rates in Government Primary Schools by Zones</i>	18
<i>Table 2.3-2: Teacher Attendance Rates in Private Primary Schools by Zones</i>	18
<i>Table 2.3-3: Teacher Attendance Rates in Government Secondary Schools by Gender</i>	18
<i>Table 2.3-4: Teacher Attendance Rates in Private Secondary Schools by Gender</i>	18
<i>Table 3.1-1: Summary Statistics on Centre-types, Staff and Students as at July 2011</i>	19
<i>Table 3.1-2: Enrolment in Day-Care/Crèche by Age and Gender</i>	19
<i>Table 3.1-3: Enrolment in Pre-Schools by Age and Gender</i>	19
<i>Table 3.2-1: Teacher-Student Ratios in Schools 2010-11</i>	20
<i>Table 3.2-1-1: Enrolment in All Primary Schools by Zones Beginning School Year 2010-11</i>	21
<i>Table 3.2-1-2: Enrolment in Special Schools: Beginning School Year 2010-11</i>	22
<i>Table 3.2-1-3: Enrolment in All Primary Schools by Zones Beginning School Year 2011-12</i>	23
<i>Table 3.2-1-4: Enrolment in Special Schools: Beginning School Year 2011-12</i>	23
<i>Table 3.2-1-5: Student Enrolment in Zone 1 Primary Schools 2010-11</i>	25
<i>Table 3.2-1-6: Student Enrolment in Zone 1 Primary Schools 2011-12</i>	26
<i>Table 3.2-1-7: Student Enrolment in Zone 2 Primary Schools 2010-11</i>	27
<i>Table 3.2-1-8: Student Enrolment in Zone 2 Primary Schools 2011-12</i>	28
<i>Table 3.2-1-9: Student Enrolment in Zone 3 Primary Schools 2010-11</i>	29
<i>Table 3.2-1-10: Student Enrolment in Zone 3 Primary Schools 2011-12</i>	30
<i>Table 3.2-1-11: Student Enrolment in Zone 4 Primary Schools 2010-11</i>	31
<i>Table 3.2-1-12: Student Enrolment in Zone 4 Primary Schools 2011-12</i>	32
<i>Table 3.2-2-1: Enrolment in All Junior Secondary Schools Beginning School Year 2010-11</i>	33
<i>Table 3.2-2-2: Enrolment in All Junior Secondary Schools by Zone</i>	33
<i>Table 3.2-3-1: Enrolment in All Secondary Schools Beginning School Year 2010-11</i>	34
<i>Table 3.2-3-2: Enrolment in All Secondary Schools Beginning School Year 2011-12</i>	34
<i>Table 3.2-3-3: Enrolment in Individual Secondary Schools 2010-11</i>	35
<i>Table 3.2-3-4: Enrolment in Individual Secondary Schools 2011-12</i>	36
<i>Table 3.2-4-1: Expected Age and Proportion of Overage Students for Each Grade 2010-11</i>	39
<i>Table 3.3-1: Primary and Junior Secondary Schools Percentage Non-nationals by Grade 2010-11</i>	41

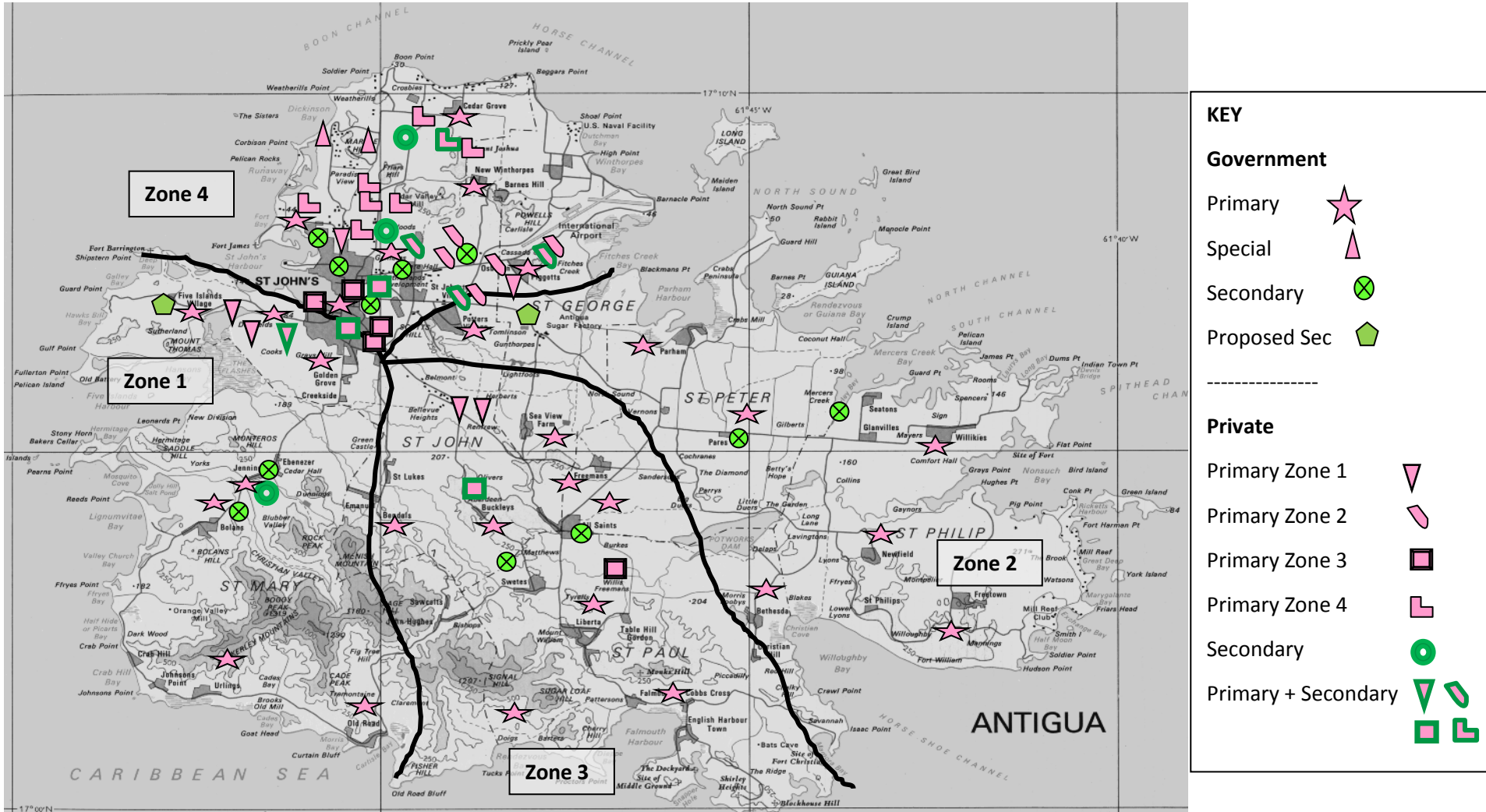
Table 3.3-2: Secondary Schools Percentage Non-nationals by Form 2010-11	41
Table 3.4-1: Enrolment in Primary Schools 2005-06 to 2010-11	42
Table 3.4-2: Trends in Enrolment in Secondary Schools 2003-04 to 2010-11	45
Table 3.4-3: Trend in Gender Parity Index	47
Table 3.4-4: Trends in Proportion of Non-national Enrolment in Schools	47
Table 3.5-1: Student Attendance Rates in Primary Schools September 2009 – July 2010	48
Table 3.5-2: Student Attendance Rate in Secondary Schools September 2009 – July 2010	48
Table 3.6-1: Internal Efficiency for Primary Schools as at July 2010	49
Table 3.6-2: Internal Efficiency for Secondary Schools as at July 2010	49
Table 3.6-3: Gender Parity Index (GPI) for Repeaters in Government Schools 2010-11	50
Table 3.6-4: Repetition and Dropout Rates 2007-08 to 2009-10	51
Table 3.7-1-1: Student Subscription to the School Meals Programme 2010 – 11	52
Table 3.7-2-1: Subscription to the Schools' Uniform Programme	53
Table 3.7-3-1: Public Spending on Education in ECD	54
Table 3.7-3-2: Estimated Cost of Repetition in Government Primary and Secondary Schools 2009-10	54
Table 4.1-1: Overview – Percentage Students Scoring \geq 50% of Marks	55
Table 4.1-1-1: Results of the Grade 2 National Assessment 2010	55
Table 4.1-1-2: Results of the Grade 4 National Assessment 2010	57
Table 4.1-2-1: Results of the Grade 2 National Assessment 2011	59
Table 4.1-2-2: Results of the Grade 4 National Assessment 2011	61
Table 4.2-1-1: CEE 2010 Comparison of Means across Subjects by Gender and School-type	62
Table 4.2-1-2: CEE 2010 Comparison of Mean Total by Zone, Gender and School-type	62
Table 4.2-1-3: Top Schools in CEE 2010	64
Table 4.2-2-1: CEE 2011 Comparison of Means across Subjects by Gender and School-type	65
Table 4.2-2-2: CEE 2011 Comparison of Mean Total by Zone, Gender and School-type	65
Table 4.2-2-3: Top Schools in CEE 2011	66
Table 4.2-2-4: Comparison of Means over Several Years	67
Table 4.2-2-5: CEE Pass Rates 2005 – 2011	67
Table 4.3-1: Results of the CCSLC 2011 Examinations	69
Table 4.4-1: Overview – CSEC Results 2010 and 2011	70
Table 4.4-1-1: CSEC Results in All General and Technical Subjects 2010	71
Table 4.4-1-2: CSEC Results in English A 2010	72
Table 4.4-1-3: CSEC Results in Mathematics 2010	73
Table 4.4-1-4: Quality of Passes by School in CSEC 2010	74
Table 4.4-1-5: Further Statistical Analysis Associated with Quality of Passes CSEC 2010	76
Table 4.4-1-6: Student Pass Rate in Other Subject Areas CSEC 2010	76
Table 4.4-2-1: Results in All General and Technical Subjects CSEC 2011	78
Table 4.4-2-2: Results in English A CSEC 2011	79
Table 4.4-2-3: Results in Mathematics CSEC 2011	80
Table 4.4-2-4: Quality of Passes by School in CSEC 2011	81
Table 4.4-2-5: Further Statistical Analysis Associated with Quality of Passes CSEC 2011	83
Table 4.4-2-6: Student Pass Rate in Other Subject Areas CSEC 2011	83
Table 4.4-2-7: Comparison of In-school with Out-of-school Candidates for the CSEC 2011 Examinations	84

List of Figures

Figure 1.1: Approximate Location of All Primary and Secondary Schools on Antigua-----	7
Figure 2.1-1: Teachers by Gender in All Government Schools -----	14
Figure 2.1-2: Teachers by Gender and Status in All Government Schools -----	14
Figure 2.2-1: Distribution of the Ages of Teachers in Government Primary Schools-----	15
Figure 2.2-2: Distribution of the Ages of Teachers in Government Secondary Schools -----	16
Figure 2.2-3: Distribution of the Years of Experience of Teachers in Government Primary Schools -----	16
Figure 2.2-4: Distribution of the Years of Experience of Teachers in Government Secondary Schools-----	17
Figure 3.2-1-1: Cross-Section Student Distribution at Primary by School-type 2010-11-----	22
Figure 3.2-1-2: Cross-Section Student Distribution at Primary by School-type 2011-12-----	24
Figure 3.2-4-1: Cross-Section Student Enrolment in Pre-K, Primary and Secondary Schools by Gender 2010-11-----	37
Figure 3.2-4-2: Age-in-Grade Distribution 2010-11: Primary Stage-----	38
Figure 3.2-4-3: Age-in-Grade Distribution 2010-11: Secondary Stage -----	39
Figure 3.2-4-4: Population Pyramid for Students in Primary and Secondary Schools 2010-11 -----	40
Figure 3.4-1: Trend in Enrolment in Primary Schools by School-type 2005-06 to 2011-12-----	43
Figure 3.4-2: Trend in Enrolment in Primary Schools by Gender 2005-06 to 2010-11-----	44
Figure 3.4-3: Trend in Enrolment in Secondary Schools by School-type 2003-04 to 2011-12 -----	45
Figure 3.4-4: Trend in Enrolment in Secondary Schools by Gender 2003-04 to 2010-11 -----	46
Figure 3.6-1: Cross-Section of Gender Patterns in Repetition 2009-10-----	50
Figure 3.6-2: Cross-Section of Gender Patterns in Dropout Rates at Secondary 2009-10-----	51
Figure 4.1-1-1: Comparison of Results for 2010 Grade 2 Language Arts by Gender, Zone and School-type -----	56
Figure 4.1-1-2: Comparison of Results for 2010 Grade 2 Mathematics by Gender, Zone and School-type-----	56
Figure 4.1-1-3: Comparison of Results for 2010 Grade 4 Language Arts by Gender, Zone and School-type -----	58
Figure 4.1-1-4: Comparison of Results for 2010 Grade 4 Mathematics by Gender, Zone and School-type-----	59
Figure 4.1-2-1: Comparison of Results for 2011 Grade 2 Language Arts by Gender and Zone -----	60
Figure 4.1-2-2: Comparison of Results for 2011 Grade 2 Mathematics by Gender and Zone -----	60
Figure 4.1-2-3: Comparison of Results for 2011 Grade 4 Language Arts by Gender and Zone -----	61
Figure 4.1-2-4: Comparison of Results for 2011 Grade 4 Mathematics by Gender and Zone -----	62
Figure 4.2-1-2: CEE 2010 Comparison of Total Scores by Gender, Zone and School-type-----	63
Figure 4.2-2-1: CEE 2011 Comparison of Total Scores by Gender, Zone and School-type-----	65
Figure 4.2-2-2: Comparison of Trends in CEE Pass Rates by Gender within School-type -----	68
Figure 4.4-2-1: Antigua and Barbuda's Pass Rate in Mathematics with Region-----	84

1. General Information on Primary and Secondary Schools

Figure 1.1: Approximate Location of All Primary and Secondary Schools on Antigua



The Holy Trinity Primary School in Barbuda comes under the administrative responsibility of Zone 4.

Table 1.1: Listing of Schools in Antigua and Barbuda as at beginning School Year 2011-12

Type	Primary				Secondary
	Zone 1	Zone 2	Zone 3	Zone 4	
Government Schools	Bolans	Bethesda	Bendals	Cedar Grove	All Saints (ASSS)
	Five Islands	Freetown	Buckleys	Holy Trinity	Antigua Girls' High [▽] (AGHS)
	Golden Grove (GG)	Newfield	Cobbs Cross (C Cross)	Mary E Pigott	Antigua Grammar [▽] (AGS)
	Greenbay	Pares	Charlesworth T Samuel	New Winthorpes	Clare Hall (CHSS)
	Jennings	Parham	Freemansville (F'mansville)	Pigotts	Glanvilles (GSS)
	Old Road	Potters	JT Ambrose	TN Kirnon (TNK)	Irene B Williams (IBW)
	Urlings	Willikies	Liberta	Villa	Jennings (JSS)
			Sea View Farm (SV Farm)	Adele [†]	Ottos Comprehensive (OCS)
				School for the Deaf [†]	Pares (PSS)
					Princess Margaret (PMSS)
					Sir Mc Chesney George (SMCG)
				St. Mary's (SMSS)	
Private Schools	Christian Faith Academy ^ℚ (CFA)	Christian Union ^ℚ (C Union)	Baptist Academy ^ℚ (BA)	Better Chance	Baptist Academy ^ℚ (BA)
	Grays Crescent (G Crescent)	AE Goodwin Faith and Hope (AEG F&H)	Foundation Mixed (F Mixed)	CCSET International	CCSET International
	St. Peter's*	Kids Unlimited (Kids Unltd)	Greenville	Devine Academy of Excellence ^ℚ	Christ the King ^{ℚ▽} (CKHS)
	Temple Academy* (TA)	Sea View Academic Foundation	Island Academy (IA)	Gospel Light Elementary ^ℚ	Christian Faith Academy ^ℚ (CFA)
	TOR Memorial (TOR)	St. Michael's ^ℚ	Minoah Magnet (M Magnet)	Grace Christian Academy ^ℚ (GCA)	Island Academy (IA)
	Visionaries for Christ ^{ℚ†} (VfC)	St. John's Catholic ^ℚ	New Bethel Seventh Day Adventist ^ℚ	St. Andrew's	Sea View Academic Foundation
	Zion ^ℚ	Sunnydale	Seventh Day Adventist ^ℚ	St. Nicholas	Seventh Day Adventist ^ℚ

			(7 th -Day)		(7 th -Day)
	Nyahbinghi Theocracy [Ⓐ]	Sunnyside Tutorial	St. John's Lutheran [Ⓐ]	Wesleyan Junior Academy [Ⓐ]	St. Anthony's (StA)
					St. Joseph's Academy [Ⓐ] (SJA)
					Trinity Academy (TA)
					AE Goodwin Faith and Hope (AEG F&H)

[Ⓐ]Church School; †Special School; [∇]Single-sex School

2. Statistical Information on Teachers

2.1 Teachers Present in Schools

This Section contains information on teachers actively teaching in classrooms for the school year 2010-11. It does *not* include information on teachers on leave (e.g. study, duty leave), or who may be enrolled full-time in Teacher Training.

Table 2.1-1: Categories of Teachers

Trained Teachers	Untrained Teachers
Principals	Graduate Assistant II (GAI)
Deputy Principals	Assistant Teacher III (ATIII)
Senior Graduate Assistant	Un-certificated Teacher UT
Graduate Assistant I (GAI)	Teacher's Aide T/A
Specialist II (SPII)	
Assistant Teacher I (ATI)	
Assistant Teacher II(ATII)	

Table 2.1-2: Categories of Teachers in the Government Schools 2010-11

Level	P		DP		Sr. Grad.		GAI		GAI		SPII		ATI		ATII		ATIII		UT		T/A		P.E.		Total		
	M	F	M	F	M	F	M	F	M	F	M	F	M	F	M	F	M	F	M	F	M	F	M	F	M	F	T
Primary	7	24	0	5	0	0	2	49	1	5	2	4	3	24	10	139	1	17	15	120	0	7	3	10	44	404	448
Secondary	4	7	2	5	2	1	23	65	28	86	3	0	2	16	28	62	3	11	42	92	0	0	1	0	138	345	483
Total	11	31	2	10	2	1	25	114	29	91	5	4	5	40	38	201	4	28	57	212	0	7	4	10	182	749	931

This table refers to teachers who are actively involved in the learning/teaching process in the Government schools

Table 2.1-3: Zone 1 Government Schools Categories of Teachers

Schools	P		DP		Sr. Grad.		GAI		GAI		SPII		ATI		ATII		ATIII		UT		T/A		P.E.		Total		
	M	F	M	F	M	F	M	F	M	F	M	F	M	F	M	F	M	F	M	F	M	F	M	F	M	F	T
Bolans		1						1							5		1		4				1		1	12	13
Five Island		1		1				1					1		10			1	5				1	1	20	21	
GG		1						3					1	1	11		1		6				1	1	24	25	
Greenbay	1			1				3		1	1		3	2	9			1	10				1	4	29	33	
Jennings		1						1						1	5		1		7					1	15	16	
Old Road		1					1	3							3			1	2					2	9	11	
Urlings		1						1					1	1	1	3		1		2				2	9	11	
Total	1	6	0	2	0	0	1	13	0	1	0	1	1	6	5	46	0	4	3	36	0	0	1	3	12	118	130

Table 2.1-4: Zone 2 Government Schools Categories of Teachers

Schools	Principal		DP		Sr. Grad.		GAI		GAI		SP		ATI		ATII		ATIII		UT		T/A		P.E.		Total		
	M	F	M	F	M	F	M	F	M	F	M	F	M	F	M	F	M	F	M	F	M	F	M	F	M	F	T
Bethesda		1						1						1		1		1		1					0	6	6
Freetown								1							3		1		1						0	6	6
Newfield	1												1		3		1		1						1	6	7
Pares		1											1		4		1	1	2						1	9	10
Parham	1							2		1					5										1	8	9
Potters		1						1		1			1		4			1	5			1			2	13	15
Willikies		1						1						1	4			1	1						2	7	9
Total	2	4	0	0	0	0	0	6	0	2	0	0	0	4	1	24	0	4	3	11	0	0	1	0	7	55	62

Table 2.1-5: Zone 3 Government Schools Categories of Teachers

Schools	Principal		DP		Sr. Grad.		GAI		GAIL		SPII		ATI		ATII		ATIII		UT		T/A		P.E.		Total		
	M	F	M	F	M	F	M	F	M	F	M	F	M	F	M	F	M	F	M	F	M	F	M	F	M	F	T
Bendals	1											1	1	5					1	4			1		4	10	14
Buckleys		1						2						1		2		1		3				1	0	11	11
CT Samuel		1						3								2				2					0	8	8
Cobbs Cross		1						1							1	3				2				1	1	8	9
F'mansville		1						2							1				1	3					1	7	8
IB Williams	1			1				3			2				5		1	1	6						4	16	20
JT Ambrose		1						2				1		2		6		1		3					0	16	16
Liberta		1						3						1		5				1				1	0	12	12
SV Farm		1						1			1				2				1	3					2	8	10
Total	2	7	0	1	0	0	1	16	0	1	2	3	1	9	1	26	0	3	4	27	0	0	1	3	12	96	108

Table 2.1-6: Zone 4 Government Schools Categories of Teachers

Schools	Principal		DP		Sr. Grad.		GAI		GAIL		SP		ATI		ATII		ATIII		UT		T/A		P.E.		Total		
	M	F	M	F	M	F	M	F	M	F	M	F	M	F	M	F	M	F	M	F	M	F	M	F	M	F	T
Cedar Grove		1													6		1		1				1	0	10	10	
Holy Trinity		1						1						1	3		1	2	12					3	18	21	
MEPigott	1			1				4		1			1	1	4		2		9				1	2	23	25	
N Win		1						2						2					2					0	7	7	
Pigotts		1						2						5	1				6					1	14	15	
TN Kirnon	1			1				4					1	1	1	10			2	7		1	1	5	25	30	
Villa		1						1	1					2		8		1	1	9			1	2	23	25	
Adele		1											1		4							5		0	11	11	
Sch Deaf		1												1		1						1		0	4	4	
Total	2	7	0	2	0	0	0	14	1	1	0	0	1	5	3	43	1	6	5	46	0	7	0	4	13	135	148

Table 2.1-7: Secondary Schools Categories of Teachers

Schools	Principal		Deputy		Sr. Grad.		GAI		GAI		SP		ATI		ATII		ATIII		UT		P.E.		Total		
	M	F	M	F	M	F	M	F	M	F	M	F	M	F	M	F	M	F	M	F	M	F	M	F	T
ASS	1			1	1	1	5	8	6	12	1			2	4	4	1	1	5	13			24	42	66
AHGS		1		1			1	8	2	11					3	11		2	1	6			7	40	47
AGS	1			1			6	4	4	8			1		2	4	2	1	4	7			20	25	45
CHSS		1					2	8	3	9	1			4	1	8		1	4	11			11	42	53
SMCG	1		1					1		2						2		1	2	2			4	8	12
JSS		1		1	1		2	1	3	8	1		1		4	7			9	12	1		22	30	52
OCS		1		1			5	10	1	5					4	10		3	6	13			16	43	59
PSS		1						6	5	7				4	2	4		1	2	8			9	31	40
PMS	1		1				2	16	2	17					7	9		1	4	16			17	59	76
GSS		1						2	2	3				4					3	3			5	13	18
SMSS		1						1		4				2	1	3			2	1			3	12	15
Total	4	7	2	5	2	1	23	65	28	86	3	0	2	16	28	62	3	11	42	92	1	0	138	345	483

Figure 2.1-1: Teachers by Gender in All Government Schools

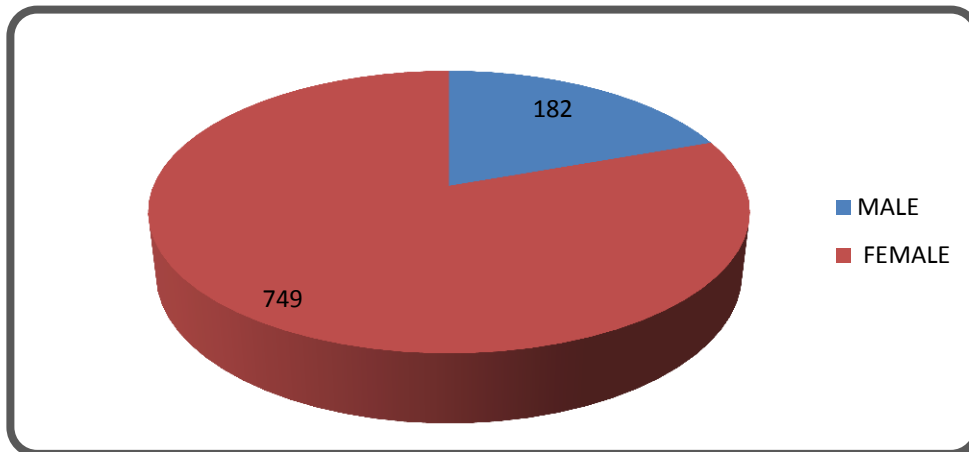


Figure 2.1-2: Teachers by Gender and Status in All Government Schools

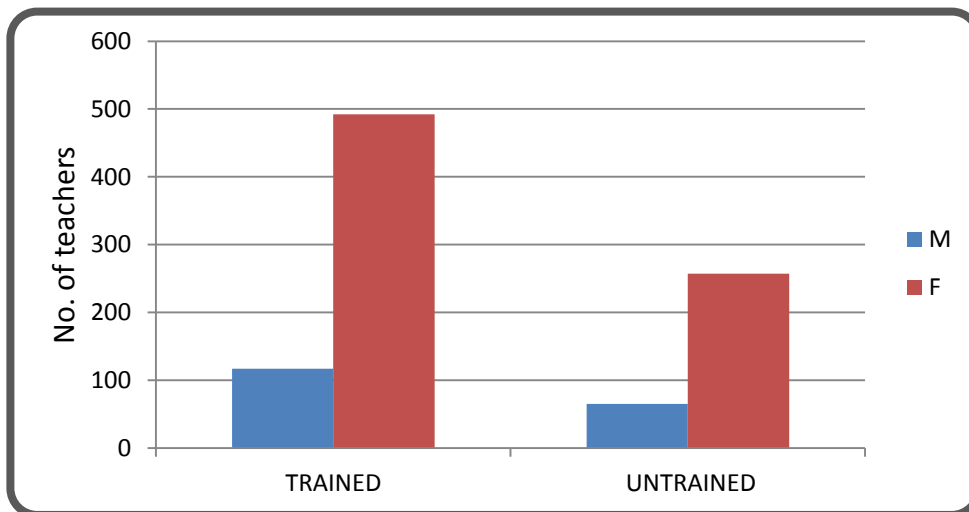


Table 2.1-9: Teachers by Gender and Status in All Private Primary and Secondary Schools 2010-11

Gender and Status	Trained			Untrained			Total		
	M	F	T	M	F	T	M	F	T
Primary	11	199	210	11	125	136	22	324	346
Secondary	49	63	112	14	28	42	63	91	154
Totals	60	262	322	25	153	178	85	415	500

Table 2.1-10: Percentage Trained Teachers in Schools 2007-08 to 2010-11

Level	School-type	2007-08	2008-09	2009-10	2010-11
Primary	Gov	60.8	57.3	48.6	60.0
	Priv	44.6	55.7	50.3	60.7

Secondary	Gov	NA	48.5	37.0	26.9
	Priv	NA	NA	50.8	72.7

NA – Data not available

It is fairly likely that the Digest under-reports the actual (true) percentage of trained teachers in government schools (both primary and secondary), as teachers’ ‘true’ status often lags their official status.

2.2 Age and Years of Experience of Teachers in Government Schools

The information in this Section covers teachers in Government Schools only; too few private schools provided this information for meaningful comparative analysis.

Figure 2.2-1: Distribution of the Ages of Teachers in Government Primary Schools

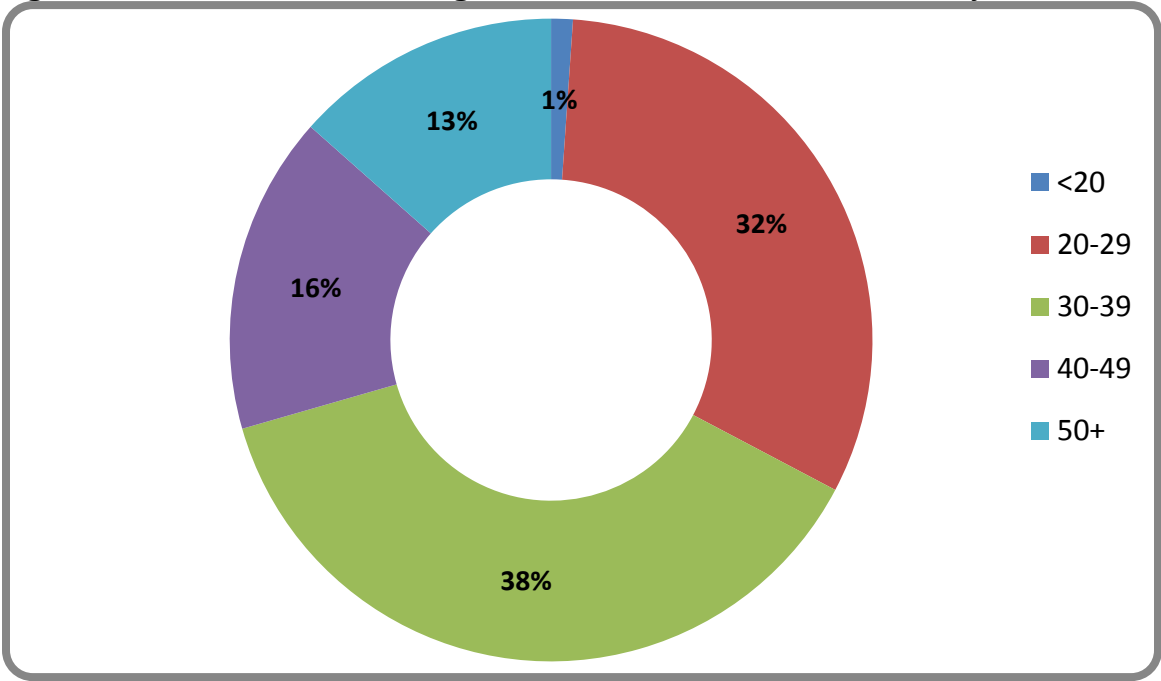


Figure 2.2-2: Distribution of the Ages of Teachers in Government Secondary Schools

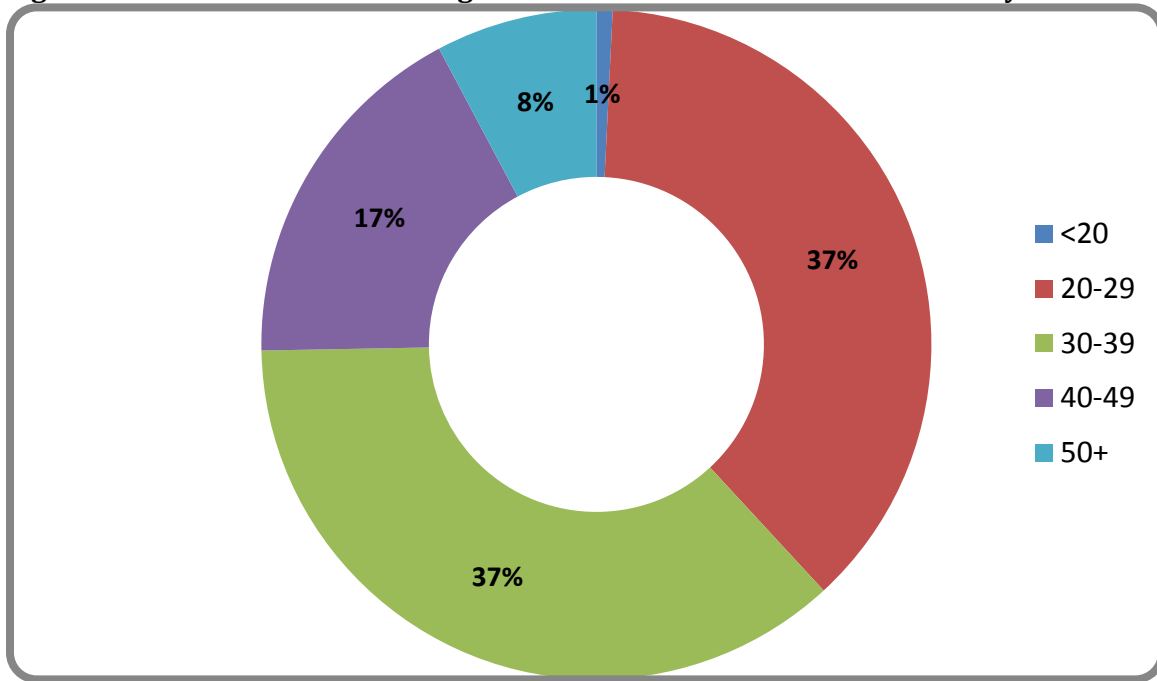


Figure 2.2-3: Distribution of the Years of Experience of Teachers in Government Primary Schools

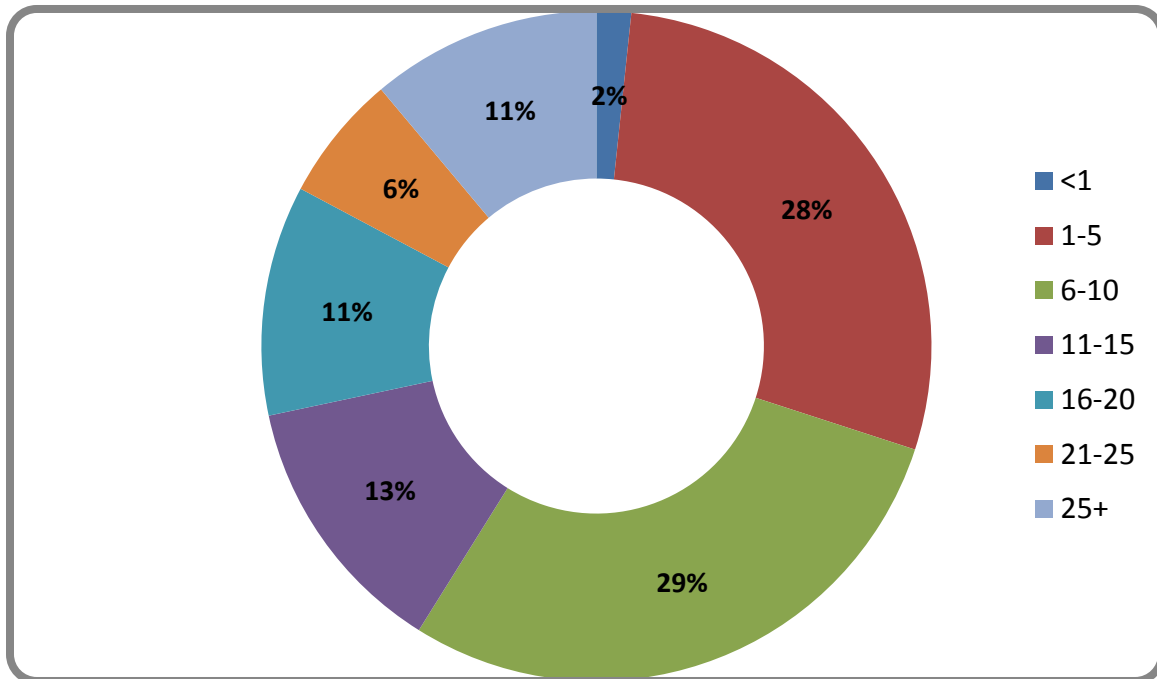
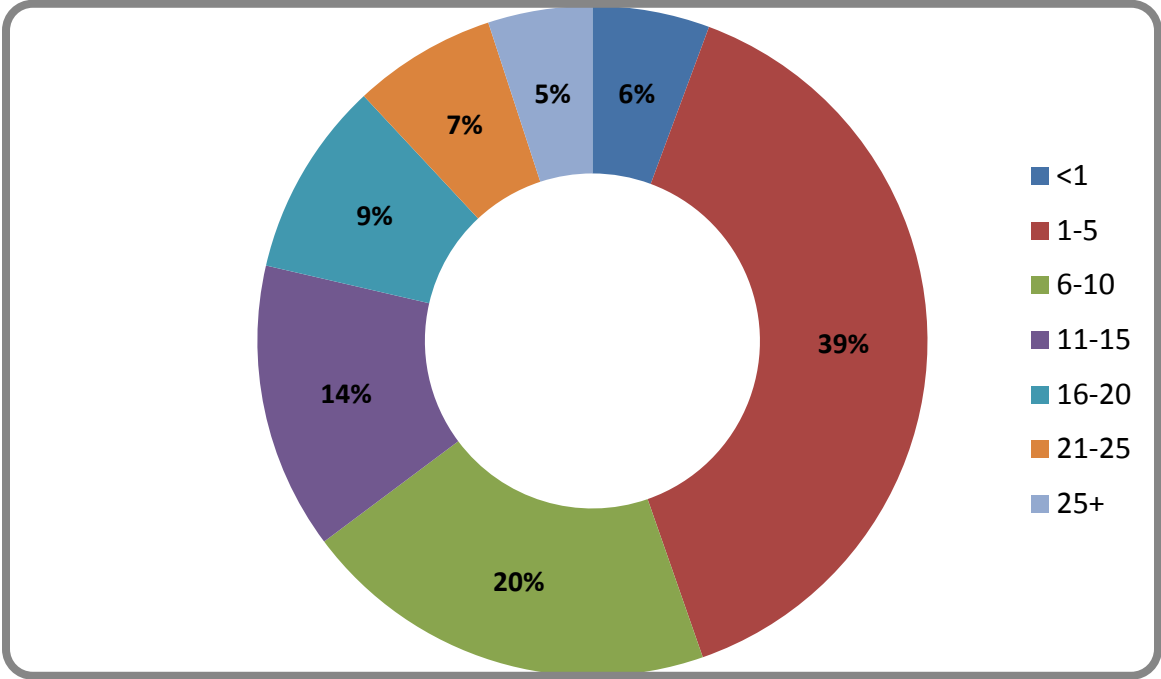


Figure 2.2-4: Distribution of the Years of Experience of Teachers in Government Secondary Schools



2.3 Teacher Attendance Rates

This Section contains information on Teacher Attendance Rates for the school year 2010-11.

Table 2.3-1: Teacher Attendance Rates in Government Primary Schools by Zones

Zone/#	Sept	Oct	Nov	Dec	Jan	Feb	Mar	April	May	June	July	Av. Year
1/7	94.7	94.0	90.2	86.9	93.9	89.5	93.0	94.0	94.7	96.1	90.6	92.5
2/7	94.5	87.7	87.2	86.9	89.9	88.8	85.4	89.7	86.8	83.5	74.1	86.8
3/6	87.6	79.0	90.3	85.3	92.4	90.5	89.8	91.6	87.6	92.0	98.7	89.5
4/8	95.9	91.3	92.7	91.8	87.1	86.1	86.8	94.4	91.5	89.8	98.1	91.4
T/28	93.2	88.0	90.1	87.7	90.8	88.7	88.8	92.4	90.2	90.4	90.4	90.1

In the column z/#, the first number refers to the zone, the second to the number of schools reporting. Schools not reporting this information include Irene B Williams, Liberta, Cobbs Cross and Adele

Table 2.3-2: Teacher Attendance Rates in Private Primary Schools by Zones

Zone/#	Sept	Oct	Nov	Dec	Jan	Feb	Mar	April	May	June	July	Av. Year
1/2	98.8	95.0	98.0	88.7	93.6	93.7	98.7	97.6	98.0	98.1	-	96.0
2/2	99.1	98.3	93.7	96.4	99.3	97.4	99.7	96.8	99.6	99.1	98.0	97.9
3/4	97.6	96.1	97.0	96.6	96.1	96.1	96.1	96.7	97.6	95.5	-	96.5
4/5	99.8	99.2	99.5	99.8	98.5	98.7	97.4	97.7	96.7	99.9	-	98.7
T/13	98.8	97.2	97.1	95.4	96.9	96.5	98.0	97.2	98.0	98.2	98.0	97.4

From the information provided here, the attendance rate of teachers in private schools is higher than that in government schools. However, it should be noted that fewer than half the private schools reported this information, whereas most of the government schools did (88% and 41% respectively).

Table 2.3-3: Teacher Attendance Rates in Government Secondary Schools by Gender

	Sept	Oct	Nov	Dec	Jan	Feb	Mar	April	May	June	July	Av. Year
M	96.3	95.4	93.7	89.6	93.8	93.0	90.5	87.0	89.2	91.1	85.8	91.5
F	94.2	93.5	92.4	90.4	93.9	92.9	93.2	91.1	92.3	92.0	89.6	92.3
Total	95.3	94.5	93.1	90.0	93.9	93.0	91.9	89.1	90.8	91.6	87.7	91.9

Schools not reporting this information include All Saints, Pares, SirMc Chesney George.

Table 2.3-4: Teacher Attendance Rates in Private Secondary Schools by Gender

	Sep	Oct	Nov	Dec	Jan	Feb	Mar	April	May	June	Av. Year
Male	99.4	99.5	99.5	97.2	94.0	99.3	99.0	93.6	95.1	94.9	97.2
Female	94.9	97.2	95.5	94.3	90.5	98.3	98.7	92.5	94.2	92.3	94.8
Total	97.2	98.4	97.5	95.8	92.3	98.8	98.9	93.1	94.7	93.6	96.0

Only 5/10 private secondary schools provided this information.

3. Statistical Information on Student Enrolment and Wastage in Schools

3.1 Enrolment in Pre-Primary Education: Day-Care/Crèche Facilities and Pre-Schools 2010-11

Table 3.1-1: Summary Statistics on Centre-types, Staff and Students as at July 2011

	Day-Care/Crèche Only	Pre-Schools only	Day-Care/Pre-School	Totals
No. Centres	16	31	45	91
No. Staff	53	165	208	426
No. Students	199	1258	1905	3362
No. Students/Staff	4	8	9	8

Table 3.1-2: Enrolment in Day-Care/Crèche by Age and Gender

Age/years	≤1		1 – ≤ 2		2 – ≤3		3		Totals		
Gender	M	F	M	F	M	F	M	F	M	F	T
No. Students	103	115	156	144	270	209	7	17	536	485	1021

Table 3.1-3: Enrolment in Pre-Schools by Age and Gender

Age/years	2 – ≤3		3 – ≤ 4		4 – ≤5		5 +		Totals		
Gender	M	F	M	F	M	F	M	F	M	F	T
No. Students	86	142	496	485	451	455	116	110	1149	1192	2341

3.2 Student Enrolment in All Primary, Junior Secondary and Secondary Schools

This Section covers student enrolment in primary and secondary schools for the school years 2010-11 and 2011-12.

For the school year 2010-11:

- ✂ No. of students enrolled in all primary, junior secondary and secondary schools at the beginning of the school year 2010-11: 18 828
- ✂ School-level distribution: Primary 57.2%; Junior Secondary 2.8%; Special Education 0.5%, Secondary 39.5%
- ✂ Gender Distribution: Males 51.1% Females 48.9%
- ✂ School-type Distribution: Public 61.2%; Private 38.8%

Table3.2-1: Teacher-Student Ratios in Schools 2010-11

Zones	Government	Private	All
1	14	16	15
2	10	14	12
3	11	18	15
4	13	18	16
All primary	13	16	15
All Secondary	12	10	11

It is worth noting that whilst the Teacher-Student ratio in secondary schools is relatively low, teachers teach subjects, so that class sizes in secondary schools are often much larger than these numbers suggest.

For the school year 2011-12:

- ✂ No. of students enrolled in all primary, transitional secondary and secondary schools at the beginning of the school year 2011-12: 18 464
- ✂ School-level distribution: Primary 56.6%; Special Education 0.6%, Secondary 42.8%
- ✂ Gender Distribution: Males 50.9% Females 49.1%
- ✂ School-type Distribution: Public 62.5%; Private 37.5%

3.2-1 Primary Schools

Student Distribution in Primary Schools 2010-11:

- ✂ New entrants to Kindergarten in private schools who attended pre-school; 810 – 98% of K-private
- ✂ New entrants to Kindergarten in government schools who attended pre-school; 371 – 54% of K-government
- ✂ Gender Distribution: Males 52.3% Females 47.7%
- ✂ Student Population in School-type Distribution: Government 47.4% Private 52.6%

Table 3.2-1-1: Enrolment in All Primary Schools by Zones Beginning School Year 2010-11

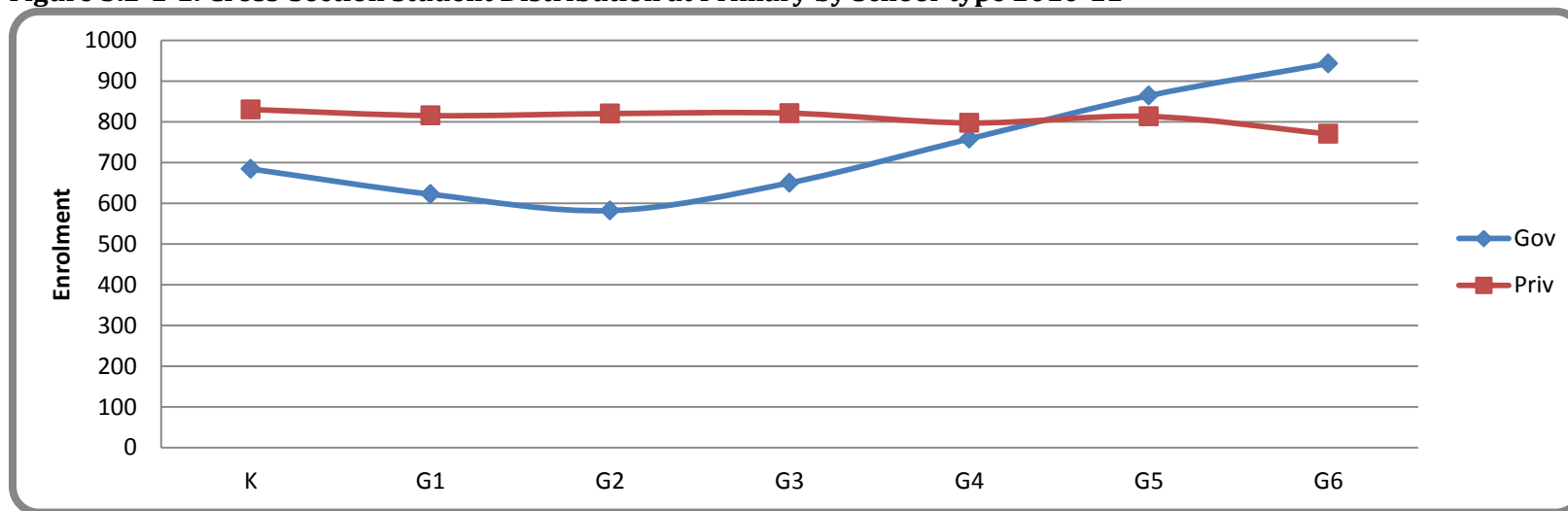
Zones		K			Grade 1			Grade 2			Grade 3			Grade 4			Grade 5			Grade 6			Total		
		M	F	T	M	F	T	M	F	T	M	F	T	M	F	T	M	F	T	M	F	T	M	F	T
1	G	134	114	248	145	87	232	103	102	205	124	98	222	145	119	264	167	146	313	168	136	304	986	802	1788
	P	48	52	100	45	37	82	53	48	101	57	40	97	45	55	100	69	57	126	52	56	108	369	345	714
2	G	44	43	87	45	28	73	48	29	77	42	43	85	41	38	79	59	49	108	56	53	109	335	283	618
	P	111	146	257	144	129	273	117	132	249	123	138	261	122	130	252	118	140	258	107	127	234	842	942	1784
3	G	73	69	142	86	44	130	78	45	123	87	66	153	98	73	171	89	98	187	120	89	209	631	484	1115
	P	135	121	256	123	146	269	137	149	286	139	136	275	136	131	267	138	132	270	136	127	263	944	942	1886
4	G	112	95	207	84	103	187	107	70	177	97	93	190	132	112	244	145	111	256	183	138	321	860	772	1582
	P	121	96	217	99	92	191	95	89	184	97	91	188	82	96	178	79	80	159	88	77	165	661	621	1282
T	G	363	321	684	360	262	622	336	246	582	350	300	650	416	342	758	460	404	864	527	416	943	2812	2291	5103
	P	415	415	830	411	404	815	402	418	820	416	405	821	385	412	797	404	409	813	383	387	770	2816	2850	5666
T	T	778	736	1514	711	666	1437	738	664	1402	766	705	1471	801	754	1555	864	813	1677	910	803	1713	5628	5141	10769

The information given here does not include enrolment in the two Special Schools

Table 3.2-1-2: Enrolment in Special Schools: Beginning School Year 2010-11

	Male	Female	Totals
Adele	42	29	71
School for the Deaf	10	5	15
Totals	52	34	86

Figure 3.2-1-1: Cross-Section Student Distribution at Primary by School-type 2010-11



Student Distribution in Primary Schools 2011-12:

✂ Gender Distribution: Males 51.8% Females 48.2%

✂ Student Population in School-type Distribution: Government 47.8% Private 52.2%

At time of going to print, information from primary schools on new entrants to Kindergarten for the school year 2011-12 is too limited for useful analysis and inclusion in this edition of the Digest.

Table 3.2-1-3: Enrolment in All Primary Schools by Zones Beginning School Year 2011-12

Zones		K			Grade 1			Grade 2			Grade 3			Grade 4			Grade 5			Grade 6			Total		
		M	F	T	M	F	T	M	F	T	M	F	T	M	F	T	M	F	T	M	F	T	M	F	T
1	G	152	111	263	120	96	216	148	98	246	110	95	205	135	102	237	168	131	299	123	139	262	956	772	1728
	P	37	54	91	43	38	81	37	41	78	43	48	91	50	39	89	41	46	87	57	69	126	308	335	643
2	G	46	36	82	39	41	80	47	30	77	42	26	68	56	34	90	46	40	86	58	49	107	334	256	590
	P	151	150	301	117	138	255	129	112	241	109	133	242	121	134	255	111	124	235	111	132	243	849	923	1772
3	G	78	71	149	63	59	122	78	52	130	83	55	138	95	71	166	87	69	156	92	102	194	576	479	1055
	P	124	123	247	126	120	246	120	143	263	142	139	281	123	139	262	130	132	262	128	131	259	893	927	1820
4	G	110	115	225	116	93	209	89	94	183	118	87	205	124	106	230	153	113	266	146	118	264	856	726	1582
	P	94	81	175	102	84	186	87	98	185	96	82	178	92	89	181	94	93	187	76	95	171	641	622	1263
T	G	386	333	719	338	289	627	362	274	636	353	263	616	410	313	723	454	353	807	419	408	827	2722	2233	4955
	P	406	408	814	388	380	768	373	394	767	390	402	792	386	401	787	376	395	771	372	427	799	2691	2807	5498
	T	792	741	1533	726	669	1395	735	668	1403	743	665	1408	796	714	1510	830	748	1578	791	835	1626	5413	5040	10453

The information given here does not include enrolment in the two government Special Schools plus one private Special School.

Table 3.2-1-4: Enrolment in Special Schools: Beginning School Year 2011-12

	Male	Female	Totals
Adele	46	28	74
School for the Deaf	6	8	14
Visionaries for Christ	9	7	16
Totals	61	43	104

Figure 3.2-1-2: Cross-Section Student Distribution at Primary by School-type 2011-12

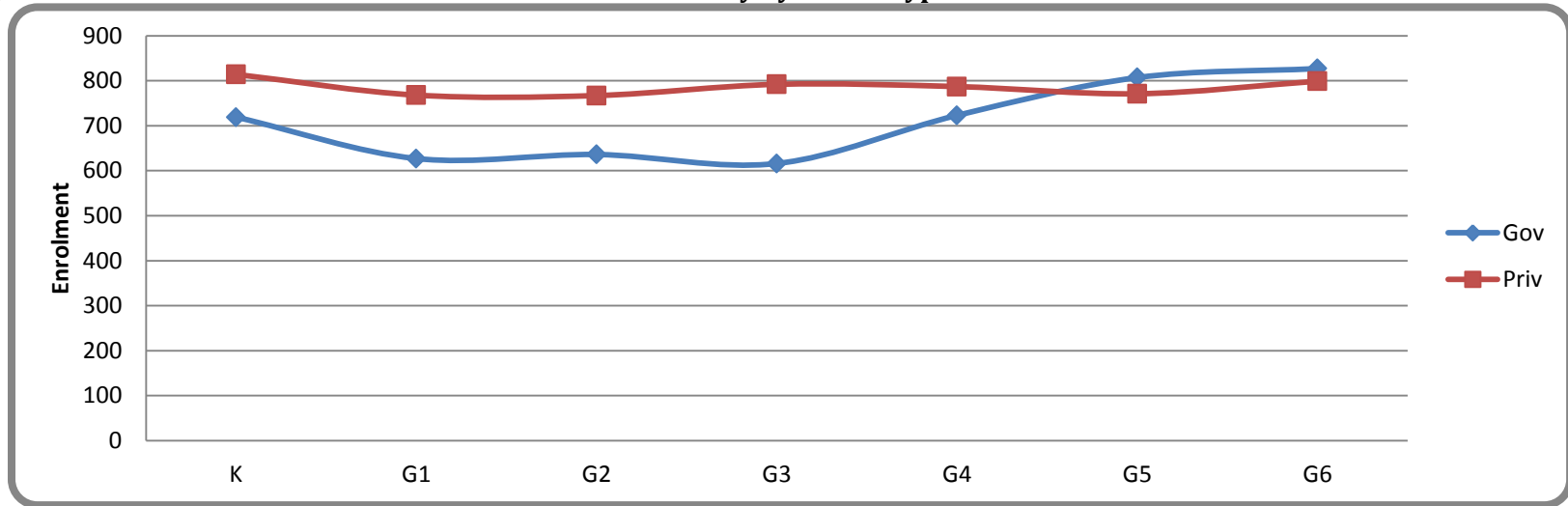


Table 3.2-1-5: Student Enrolment in Zone 1 Primary Schools 2010-11

	Grade K			Grade 1			Grade 2			Grade 3			Grade 4			Grade 5			Grade 6			Grand Total		
	M	F	T	M	F	T	M	F	T	M	F	T	M	F	T	M	F	T	M	F	T	M	F	T
Bolans	8	6	14	14	3	17	10	14	24	15	12	27	13	8	21	9	11	20	18	21	39	87	75	162
Five Islands	39	33	72	46	28	74	15	31	46	24	28	52	30	24	54	40	29	69	21	27	48	215	200	415
GG	27	24	51	33	16	49	26	21	47	29	20	49	20	27	47	36	42	78	46	38	84	217	188	405
Greenbay	31	27	58	27	17	44	26	12	38	18	13	31	49	29	78	42	37	79	41	33	74	234	168	402
Jennings	17	11	28	13	12	25	16	15	31	24	16	40	19	18	37	17	17	34	26	5	31	132	94	226
Old Road	5	8	13	7	4	11	6	3	9	4	6	10	8	6	14	12	6	18	6	6	12	48	39	87
Urlings	7	5	12	5	7	12	4	6	10	10	3	13	6	7	13	11	4	15	10	6	16	53	38	91
Total	134	114	248	145	87	232	103	102	205	124	98	222	145	119	264	167	146	313	168	136	304	986	802	1788
CFA	12	3	15	6	7	13	16	2	18	15	8	23	10	9	19	22	14	36	12	10	22	93	53	146
G Crescent	7	15	22	10	10	20	9	18	27	12	7	19	9	15	24	10	21	31	10	12	22	67	98	165
St. Peters	13	14	27	8	6	14	9	6	15	7	6	13	12	4	16	15	6	21	6	11	17	70	53	123
TOR	7	11	18	11	8	19	12	15	27	16	16	32	4	17	21	11	13	24	9	17	26	70	97	167
Temple A	1	5	6	3	1	4	3	3	6	3	2	5	8	4	12	5	1	6	15	6	21	38	22	60
Zion	0	0	0	0	0	0	0	1	1	0	0	0	0	1	1	1	1	2	0	0	0	1	3	4
VfC	8	4	12	7	5	12	4	3	7	4	1	5	2	5	7	5	1	6	0	0	0	30	19	49
Total	48	52	100	45	37	82	53	48	101	57	40	97	45	55	100	69	57	126	52	56	108	369	345	714
G Total	182	166	348	190	124	314	156	150	306	181	138	319	190	174	364	236	203	439	220	192	412	1355	1147	2502

Table 3.2-1-6: Student Enrolment in Zone 1 Primary Schools 2011-12

	Grade K			Grade 1			Grade 2			Grade 3			Grade 4			Grade 5			Grade 6			Grand Total		
	M	F	T	M	F	T	M	F	T	M	F	T	M	F	T	M	F	T	M	F	T	M	F	T
Bolans	18	6	24	7	5	12	15	5	20	13	13	26	17	13	30	13	7	20	9	11	20	92	60	152
Five Islands	41	34	75	36	25	61	42	34	76	28	28	56	23	27	50	38	25	63	19	27	46	227	200	427
GG	25	19	44	27	25	52	39	18	57	20	20	40	21	21	42	34	37	71	26	34	60	192	174	366
Greenbay	27	19	46	30	20	50	22	15	37	27	11	38	32	15	47	49	33	82	36	37	73	223	150	373
Jennings	18	22	40	12	10	22	15	12	27	12	15	27	25	15	40	19	18	37	18	18	36	119	110	229
Old Road	14	7	21	2	6	8	8	5	13	6	2	8	6	7	13	8	4	12	6	6	12	50	37	87
Urlings	9	4	13	6	5	11	7	9	16	4	6	10	11	4	15	7	7	14	9	6	15	53	41	94
Total	152	111	263	120	96	216	148	98	246	110	95	205	135	102	237	168	131	299	123	139	262	956	772	1728
CFA	3	8	11	8	2	10	3	7	10	11	13	24	13	8	21	8	6	14	11	15	26	57	59	116
G Crescent	9	10	19	8	12	20	11	12	23	11	11	22	9	9	18	12	13	25	10	21	31	70	88	158
St. Peters	10	11	21	15	8	23	7	7	14	6	9	15	13	5	18	8	4	12	9	11	20	68	55	123
TOR	10	10	20	5	12	17	9	9	18	11	13	24	11	12	23	4	16	20	8	12	20	58	84	142
Temple A	1	7	8	3	3	6	5	5	10	2	0	2	3	3	6	7	4	11	15	6	21	36	28	64
Zion	0	4	4	0	0	0	0	0	0	0	2	2	0	0	0	0	2	2	1	1	2	1	9	10
VfC	0	0	0	0	0	0	0	0	0	0	0	0	0	0	0	0	0	0	3	3	6	3	3	6
Nyahbinghi	4	4	8	4	1	5	2	1	3	2	0	2	1	2	3	2	1	3	0	0	0	15	9	24
Total	37	54	91	43	38	81	37	41	78	43	48	91	50	39	89	41	46	87	57	69	126	310	326	643
G Total	189	165	354	163	134	297	185	139	324	153	143	296	185	141	326	209	177	386	180	208	388	1264	1107	2371

Table 3.2-1-7: Student Enrolment in Zone 2 Primary Schools 2010-11

	Grade K			Grade 1			Grade 2			Grade 3			Grade 4			Grade 5			Grade 6			Grand Total		
	M	F	T	M	F	T	M	F	T	M	F	T	M	F	T	M	F	T	M	F	T	M	F	T
Bethesda	1	2	3	3	3	6	3	3	6	3	5	8	3	2	5	3	4	7	2	5	7	18	24	42
Freetown	4	6	10	3	3	6	2	1	3	4	7	11	3	6	9	6	2	8	4	8	12	26	33	59
Newfield	4	5	9	3	2	5	6	1	7	4	5	9	4	3	7	5	4	9	7	3	10	33	23	56
Pares	9	9	18	10	6	16	12	10	22	5	11	16	7	6	13	10	7	17	11	11	22	64	60	124
Parham	7	2	9	9	0	9	4	2	6	7	3	10	7	6	13	9	4	13	4	7	11	47	24	71
Potters	13	14	27	14	7	21	17	6	23	16	5	21	10	12	22	17	22	39	18	12	30	105	78	183
Willikies	6	5	11	3	7	10	4	6	10	3	7	10	7	3	10	9	6	15	10	7	17	42	41	83
Total	44	43	87	45	28	73	48	29	77	42	43	85	41	38	79	59	49	108	56	53	109	335	283	618
C Union	9	10	19	12	13	25	11	10	21	12	9	21	22	14	36	19	19	38	8	15	23	93	90	183
Kids Unltd	6	8	14	14	8	22	13	7	20	13	10	23	13	3	16	4	10	14	8	8	16	71	54	125
Sea View	5	8	13	14	14	28	17	11	28	11	15	26	8	13	21	11	9	20	7	9	16	73	79	152
St. Michaels	12	14	26	17	6	23	18	10	28	13	5	18	13	5	18	16	13	29	13	14	27	102	67	169
Catholic	31	49	80	33	37	70	21	38	59	30	43	73	28	38	66	32	39	71	35	43	78	210	287	497
Sunnydale	12	18	30	13	17	30	8	16	24	11	16	27	7	15	22	10	8	18	7	12	19	68	102	170
Sunnyside	36	39	75	41	34	75	29	40	69	33	40	73	31	42	73	26	42	68	29	26	55	225	263	488
Total	111	146	257	144	129	273	117	132	249	123	138	261	122	130	252	118	140	258	107	127	234	842	942	1784
G Total	155	189	344	189	157	346	165	161	326	165	181	346	163	168	331	177	189	366	163	180	343	1177	1225	2402

Table 3.2-1-8: Student Enrolment in Zone 2 Primary Schools 2011-12

	Grade K			Grade 1			Grade 2			Grade 3			Grade 4			Grade 5			Grade 6			Grand Total		
	M	F	T	M	F	T	M	F	T	M	F	T	M	F	T	M	F	T	M	F	T	M	F	T
Bethesda	2	5	7		3	3	4	2	6	2	2	4	4	4	8	2	2	4	3	4	7	17	22	39
Freetown	6	3	9	3	4	7	2	3	5	2	1	3	5	3	8	3	5	8	6	2	8	27	21	48
Newfield	1	4	5	4	3	7	3	2	5	5	2	7	3	5	8	6	3	9	4	3	7	26	22	48
Pares	7	9	16	6	7	13	11	7	18	10	7	17	12	6	18	8	6	14	11	10	21	65	52	117
Parham	6	1	7	7	4	11	9	1	10	6	4	10	8	3	11	8	7	15	10	4	14	54	24	78
Potters	16	10	26	14	14	28	16	7	23	14	7	21	18	6	24	12	14	26	13	21	34	103	79	182
Willikies	8	4	12	5	6	11	2	8	10	3	3	6	6	7	13	7	3	10	11	5	16	42	36	78
Total	46	36	82	39	41	80	47	30	77	42	26	68	56	34	90	46	40	86	58	49	107	334	256	590
C Union	11	14	25	10	10	20	13	12	25	12	13	25	12	16	28	14	16	30	20	20	40	92	101	193
Kids Unltd	8	7	15	6	6	12	9	9	18	11	6	17	12	10	22	11	2	13	5	7	12	62	47	109
Sea View	22	15	37	7	8	15	5	6	11	10	7	17	5	8	13	7	7	14	7	6	13	63	57	120
St. Michaels	12	17	29	9	14	23	20	4	24	15	9	24	17	7	24	13	8	21	16	13	29	102	72	174
Catholic	34	34	68	34	40	74	30	32	62	19	41	60	32	37	69	27	32	59	28	37	65	204	253	457
Sunnydale	22	30	52	14	20	34	11	16	27	12	15	27	9	18	27	7	14	21	9	7	16	84	120	204
Sunnyside	42	33	75	37	40	77	41	33	74	30	42	72	34	38	72	27	39	66	26	42	68	237	267	504
AEG F&H	0	0	0	0	0	0	0	0	0	0	0	0	0	0	0	5	6	11	0	0	0	5	6	11
Total	151	150	301	117	138	255	129	112	241	109	133	242	121	134	255	111	124	235	111	132	243	849	923	1772
G Total	197	186	383	156	179	335	176	142	318	151	159	310	177	168	345	157	164	321	169	181	350	1183	1179	2362

Table 3.2-1-9: Student Enrolment in Zone 3 Primary Schools 2010-11

	Grade K			Grade 1			Grade 2			Grade 3			Grade 4			Grade 5			Grade 6			Grand Total		
	M	F	T	M	F	T	M	F	T	M	F	T	M	F	T	M	F	T	M	F	T	M	F	T
Bendals	9	8	17	8	5	13	7	5	12	8	7	15	11	10	21	24	7	31	19	16	35	86	58	144
Buckleys	4	6	10	9	4	13	6	8	14	3	5	8	5	4	9	2	9	11	10	3	13	39	39	78
C Cross	6	2	8	7	2	9	5	5	10	6	4	10	11	6	17	8	7	15	9	7	16	52	33	85
F'mansville	5	6	11	9	4	13	7	3	10	4	9	13	9	7	16	1	8	9	7	6	13	42	43	85
IBW	10	7	17	7	3	10	9	3	12	7	4	11	7	5	12	6	16	22	15	14	29	61	52	113
JTA	17	15	32	13	11	24	16	9	25	27	15	42	15	17	32	19	21	40	27	14	41	134	102	236
CTS	1	6	7	5	3	8	3	2	5	6	4	10	9	8	17	4	6	10	13	5	18	41	34	75
Liberta	13	10	23	10	6	16	13	7	20	12	13	25	17	9	26	12	11	23	14	18	32	91	74	165
SV Farm	8	9	17	18	6	24	12	3	15	14	5	19	14	7	21	13	13	26	6	6	12	85	49	134
Total	73	69	142	86	44	130	78	45	123	87	66	153	98	73	171	89	98	187	120	89	209	631	484	1115
Baptist	14	16	30	13	17	30	15	16	31	12	19	31	12	18	30	12	18	30	13	13	26	91	117	208
F Mixed	20	17	37	20	23	43	21	36	57	32	20	52	30	28	58	29	31	60	41	26	67	193	181	374
Greensville	0	0	0	0	3	3	2	0	2	3	3	6	0	0	0	0	0	0	8	9	17	13	15	28
M Magnet	17	8	25	7	13	20	14	14	28	13	9	22	13	9	22	16	7	23	4	6	10	84	66	150
New Bethel	22	30	52	26	26	52	25	27	52	18	27	45	25	23	48	22	22	44	18	9	27	156	164	320
Lutheran	18	12	30	11	19	30	17	11	28	13	11	24	15	9	24	10	10	20	14	10	24	98	82	180
7-th Day	29	33	62	41	41	82	38	37	75	36	38	74	30	37	67	38	35	73	27	46	73	239	267	506
IA	15	5	20	5	4	9	5	8	13	12	9	21	11	7	18	11	9	20	11	8	19	70	50	120
Total	135	121	256	123	146	269	137	149	286	139	136	275	136	131	267	138	132	270	136	127	263	944	942	1886
G Total	208	190	398	209	190	399	215	194	409	226	202	428	234	204	438	227	230	457	256	216	472	1575	1426	3001

Table 3.2-1-10: Student Enrolment in Zone 3 Primary Schools 2011-12

	Grade K			Grade 1			Grade 2			Grade 3			Grade 4			Grade 5			Grade 6			Grand Total		
	M	F	T	M	F	T	M	F	T	M	F	T	M	F	T	M	F	T	M	F	T	M	F	T
Bendals	9	8	17	8	5	13	7	5	12	8	7	15	10	10	20	16	6	22	19	16	35	77	57	134
Buckleys	10	5	15	9	11	20	11	7	18	7	10	17	10	5	15	6	5	11	5	15	20	58	58	116
C Cross	3	6	9	5	2	7	8	6	14	5	3	8	9	8	17	10	5	15	9	7	16	49	37	86
F'mansville	16	9	25	5	4	9	8	5	13	6	5	11	4	9	13	8	8	16	1	7	8	48	47	95
JTA	17	16	33	16	15	31	13	11	24	26	13	39	28	17	45	16	22	38	25	25	50	141	119	260
CTS	5	4	9	0	5	5	5	3	8	4	2	6	5	3	8	9	7	16	4	7	11	32	31	63
Liberta	11	14	25	10	7	17	13	8	21	10	9	19	13	13	26	15	7	22	14	17	31	86	75	161
SV Farm	7	9	16	10	10	20	13	7	20	17	6	23	16	6	22	7	9	16	15	8	23	85	55	140
Total	78	71	149	63	59	122	78	52	130	83	55	138	95	71	166	87	69	156	92	102	194	576	479	1055
Baptist	14	17	31	14	15	29	14	15	29	15	15	30	12	19	31	10	18	28	10	17	27	89	116	205
F Mixed	21	13	34	22	19	41	18	23	41	24	33	57	28	22	50	30	26	56	34	35	69	177	171	348
Greenville			0	3	0	3	1	0	1	1	1	2	2	1	3	1	0	1	4	3	7	12	5	17
M Magnet	13	15	28	11	7	18	8	14	22	15	13	28	10	10	20	12	7	19	11	3	14	80	69	149
New Bethel	30	26	56	23	26	49	30	24	54	22	23	45	11	26	37	25	23	48	21	20	41	162	168	330
Lutheran	13	16	29	14	16	30	9	20	29	19	11	30	14	15	29	11	14	25	16	10	26	96	102	198
7-th Day	24	31	55	27	32	59	32	39	71	39	31	70	34	36	70	30	36	66	23	33	56	209	238	447
IA	9	5	14	12	5	17	8	8	16	7	12	19	12	10	22	11	8	19	9	10	19	68	58	126
Total	124	123	247	126	120	246	120	143	263	142	139	281	123	139	262	130	132	262	128	131	259	893	927	1820
G Total	202	194	396	189	179	368	198	195	393	225	194	419	218	210	428	217	201	418	220	233	453	1469	1406	2875

Table 3.2-1-11: Student Enrolment in Zone 4 Primary Schools 2010-11

Schools	Grade K			Grade 1			Grade 2			Grade 3			Grade 4			Grade 5			Grade 6			Grand Total		
	M	F	T	M	F	T	M	F	T	M	F	T	M	F	T	M	F	T	M	F	T	M	F	T
Cedar Grove	10	10	20	16	11	27	8	11	19	11	16	27	9	10	19	5	12	17	11	11	22	70	81	151
Holy Trinity	15	13	28	7	24	31	18	12	30	15	20	35	13	19	32	29	4	33	35	15	50	132	107	239
MEPigott	32	13	45	14	23	37	30	15	45	21	22	43	42	29	71	19	18	37	37	36	73	195	156	351
New Win	10	7	17	2	7	9	3	3	6	4	2	6	11	9	20	6	11	17	7	6	13	43	45	88
Pigotts	17	11	28	19	18	37	13	8	21	19	7	26	17	17	34	16	24	40	20	14	34	121	99	220
TN Kirnon	10	12	22	15	7	22	11	10	21	10	9	19	11	10	21	25	15	40	31	16	47	113	79	192
Villa	18	29	47	11	13	24	24	11	35	17	17	34	29	18	47	45	27	72	42	40	82	186	155	341
Total	112	95	207	84	103	187	107	70	177	97	93	190	132	112	244	145	111	256	183	138	321	860	722	1582
Better C	3	2	5	1	2	3	3	0	3	5	4	9	2	8	10	4	8	12	12	15	27	30	39	69
Gospel Light	25	20	45	16	10	26	20	9	29	9	7	16	11	6	17	7	9	16	9	4	13	97	65	162
GCA	15	17	32	13	30	43	25	22	47	23	28	51	36	25	61	25	25	50	11	13	24	148	160	308
St Andrews	14	12	26	16	12	28	17	14	31	25	21	46	8	17	25	11	15	26	14	10	24	105	101	206
St Nicholas	14	9	23	14	10	24	8	13	21	13	11	24	9	14	23	13	10	23	11	9	20	82	76	158
Wesleyan	38	32	70	31	24	55	16	29	45	17	17	34	15	22	37	15	10	25	24	21	45	156	155	311
CCSET	7	2	9	7	1	8	5	2	7	4	2	6	1	3	4	3	3	6	7	5	12	34	18	52
Divine	5	2	7	1	3	4	1	0	1	1	1	2	0	1	1	1	0	1	0	0	0	9	7	16
Total	121	96	217	99	92	191	95	89	184	97	91	188	82	96	178	79	80	159	88	77	165	661	621	1282
G Total	233	191	424	183	195	378	202	159	361	194	184	378	214	208	422	224	191	415	271	215	486	1521	1343	2864

Table 3.2-1-12: Student Enrolment in Zone 4 Primary Schools 2011-12

Schools	Grade K			Grade 1			Grade 2			Grade 3			Grade 4			Grade 5			Grade 6			Grand Total		
	M	F	T	M	F	T	M	F	T	M	F	T	M	F	T	M	F	T	M	F	T	M	F	T
Cedar Grove	13	15	28	10	8	18	17	11	28	12	11	23	12	16	28	8	11	19	5	10	15	77	82	159
Holy Trinity	22	15	37	17	15	32	13	16	29	18	12	30	27	21	48	24	10	34	36	13	49	157	102	259
MEPigott	21	24	45	30	12	42	18	28	46	24	21	45	22	24	46	40	31	71	29	20	49	184	160	344
New Win	10	6	16	8	7	15	2	9	11	3	2	5	5	3	8	14	11	25	4	11	15	46	49	95
Pigotts	12	16	28	17	10	27	9	6	15	21	20	41	17	9	26	23	20	43	9	18	27	108	99	207
TN Kirnon	12	23	35	12	14	26	20	13	33	18	10	28	14	10	24	17	11	28	25	19	44	118	100	218
Villa	20	16	36	22	27	49	10	11	21	22	11	33	27	23	50	27	19	46	38	27	65	166	134	300
Total	110	115	225	116	93	209	89	94	183	118	87	205	124	106	230	153	113	266	146	118	264	856	726	1582
Better C	3	5	8	2	3	5	4	1	5	6	2	8	3	3	6	9	5	14	10	13	23	37	32	69
Gospel Light	17	9	26	9	7	16	16	9	25	11	11	22	8	6	14	9	5	14	2	9	11	72	56	128
GCA	20	17	37	21	27	48	14	35	49	27	21	48	26	25	51	30	27	57	23	23	46	161	175	336
St Andrews	11	17	28	17	11	28	16	10	26	17	13	30	26	22	48	8	18	26	8	13	21	103	104	207
St Nicholas	12	12	24	15	7	22	12	11	23	9	13	22	13	10	23	9	14	23	11	9	20	81	76	157
Wesleyan	27	20	47	30	25	55	17	30	47	19	17	36	15	22	37	26	22	48	18	23	41	152	159	311
CCSET	2	0	2	4	2	6	7	0	7	3	2	5	1	1	2	1	2	3	3	4	7	21	11	32
Divine	2	1	3	4	2	6	1	2	3	4	3	7	0	0	0	2	0	2	1	1	2	14	9	23
Total	94	81	175	102	84	186	87	98	185	96	82	178	92	89	181	94	93	187	76	95	171	641	622	1263
G Total	204	196	400	218	177	395	176	192	368	214	169	383	216	195	411	247	206	453	222	213	435	1497	1348	2845

3.2-2 Junior Secondary Schools

Student Distribution in Junior Secondary Schools 2010-11:

- ✎ Gender Distribution: Males 68.2%, Females 31.8%
- ✎ School-type Distribution: Government 73.0%, Private 27.0%

Table 3.2-2-1: Enrolment in All Junior Secondary Schools Beginning School Year 2010-11

	M	F	T
Public	278	112	390
Private	86	58	144
Total	364	170	534

In 2010-11, due to the phasing out of the Junior Secondary Stage, only Grade 9 was present in these schools.

Table 3.2-2-2: Enrolment in All Junior Secondary Schools by Zone

Zone	School	M	F	T
1	Greenbay	47	24	71
	Urlings	12	11	23
	TotalGov	59	35	94
	Temple Academy	5	4	9
	St. Peter's	2	2	4
	TotalPriv	7	6	13
	Total Zone 1	66	41	107
3	Irene B Williams (Gov)	76	21	97
	Greensville (Priv)	2	8	10
	Total Zone 3	78	29	107
4	Holy Trinity	18	7	25
	Mary E Pigott	34	23	57
	TN Kirnon	60	18	78
	Villa	36	9	45
	TotalGov	148	57	205
	Better Chance (Priv)	8	9	17
	Total Zone 4	156	66	222

3.2-3 Secondary Schools

Student Distribution in Secondary Schools 2010-11:

- ✂ Gender Distribution: Males 48.2%, Females 51.8%
- ✂ School-type Distribution: Government 79.8%, Private 20.2%

Table 3.2-3-1: Enrolment in All Secondary Schools Beginning School Year 2010-11

	Form 1			Form 2			Form 3			Form 4			Form 5			Grand Total		
	M	F	T	M	F	T	M	F	T	M	F	T	M	F	T	M	F	T
Gov	674	663	1337	548	564	1112	750	803	1553	490	625	1115	349	469	818	2811	3124	5935
Priv	165	136	301	155	155	310	164	168	332	147	139	286	140	135	275	771	733	1504
Total	839	799	1638	703	719	1422	914	971	1885	637	764	1401	489	604	1093	3582	3857	7439

Student Distribution in Secondary Schools 2011-12:

- ✂ Gender Distribution: Males 49.6%, Females 50.4%
- ✂ School-type Distribution: Public 82.3%, Private 17.7%

Table 3.2-3-2: Enrolment in All Secondary Schools Beginning School Year 2011-12

	Form 1			Form 2			Form 3			Form 4			Form 5			Grand Total		
	M	F	T	M	F	T	M	F	T	M	F	T	M	F	T	M	F	T
Gov	853	702	1555	645	639	1284	739	712	1451	555	639	1194	424	598	1022	3216	2797	6013
Priv	153	150	303	156	126	282	136	137	273	152	143	295	107	141	248	704	697	1401
Total	1006	852	1858	801	765	1566	875	849	1724	707	782	1489	531	739	1270	3920	3987	7907

Table 3.2-3-3: Enrolment in Individual Secondary Schools 2010-11

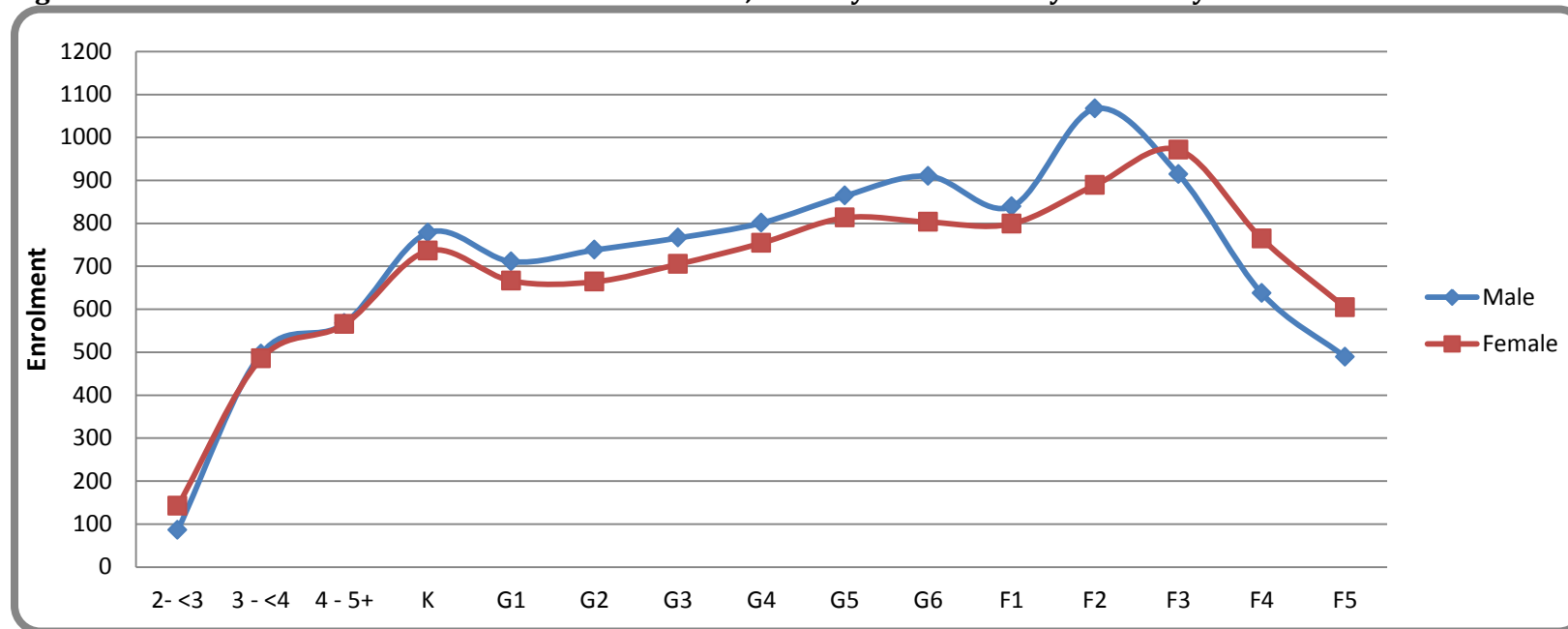
Type	School	Form 1			Form 2			Form 3			Form 4			Form 5			Grand Total		
		M	F	T	M	F	T	M	F	T	M	F	T	M	F	T	M	F	T
Government Schools	ASS	78	78	156	66	44	110	123	110	233	57	62	119	44	64	108	368	358	726
	AGHS	0	147	147	0	116	116	0	126	126	0	115	115	0	91	91	0	595	595
	AGS	123	0	123	116	0	116	129	0	129	110	0	110	89	0	89	567	0	567
	CHSS	94	80	174	51	52	103	78	106	184	58	74	132	38	40	78	319	352	671
	JSS	80	79	159	48	75	123	108	112	220	40	55	95	44	71	115	320	392	712
	OCS	91	92	183	86	77	163	96	113	209	81	131	212	35	55	90	389	468	857
	PSS	44	46	90	41	51	92	81	63	144	66	65	131	40	39	79	272	264	536
	PMS	87	90	177	89	105	194	81	133	214	67	109	176	58	102	160	382	539	921
	SMCG	15	18	33	8	14	22	10	15	25	11	14	25	1	7	8	45	68	113
	SMSS	36	21	57	26	14	40	19	14	33	0	0	0	0	0	0	81	49	130
	GSS	26	12	38	17	16	33	25	11	36	0	0	0	0	0	0	68	39	107
	Total	674	663	1337	548	564	1112	750	803	1553	490	625	1115	349	469	818	2811	3124	5935
Private Schools	BA	11	11	22	3	14	17	9	12	21	4	6	10	9	16	25	36	59	95
	CCSET	14	1	15	3	2	5	3	2	5	5	3	8	5	5	10	30	13	43
	CFA	9	10	19	18	6	24	19	15	34	31	18	49	31	13	44	108	62	170
	CKH	0	59	59	0	63	63	0	65	65	0	56	56	0	54	54	0	297	297
	IA	5	3	8	4	8	12	5	16	21	6	7	13	12	6	18	32	40	72
	TA	8	5	13	5	1	6	4	3	7	8	5	13		1	1	25	15	40
	SJA	60	0	60	66	0	66	68	0	68	57	0	57	49	0	49	300	0	300
	Sea View	4	1	5	5	5	10	8	3	11	6	3	9	9	2	11	32	14	46
	7th-Day	30	22	52	30	28	58	27	30	57	15	25	40	12	27	39	114	132	246
	StA	24	24	48	21	28	49	21	22	43	15	16	31	13	11	24	94	101	195
		Total	165	136	301	155	155	310	164	168	332	147	139	286	140	135	275	771	733
All	G Total	839	799	1638	703	719	1422	914	971	1885	637	764	1401	489	604	1093	3582	3857	7439

Table 3.2-3-4: Enrolment in Individual Secondary Schools 2011-12

Type	School	Form 1			Form 2			Form 3			Form 4			Form 5			Grand Total		
		M	F	T	M	F	T	M	F	T	M	F	T	M	F	T	M	F	T
Government Schools	ASS	83	61	144	74	63	137	109	84	193	83	94	177	46	50	96	395	352	747
	AGHS	0	117	117	0	134	134	0	112	112	0	115	115	0	109	109	0	587	587
	AGS	112	0	112	111	0	111	145	0	145	109	0	109	94	0	94	571	0	571
	CHSS	123	89	212	65	71	136	88	78	166	52	82	134	49	65	114	377	385	762
	JSS	96	85	181	60	77	137	87	92	179	56	67	123	30	45	75	329	366	695
	OCS	87	90	177	77	92	169	80	133	213	74	62	136	99	116	215	417	493	910
	PSS	58	63	121	35	33	68	77	60	137	72	51	123	23	57	80	265	264	529
	PMS	91	99	190	77	90	167	105	119	224	77	141	218	72	143	215	422	592	1014
	SMCG	14	13	27	11	12	23	13	19	32	9	15	24	11	13	24	58	72	130
	SMSS	29	20	49	24	17	41	12	9	21	13	9	22	0	0	0	78	55	133
	GSS	12	19	31	20	20	40	23	6	29	10	3	13	0	0	0	65	48	113
	IBW	23	17	40	14	4	18	0	0	0	0	0	0	0	0	0	37	21	58
	NTTC	125	29	154	77	26	103	0	0	0	0	0	0	0	0	0	202	55	257
		Total	853	702	1555	645	639	1284	739	712	1451	555	639	1194	424	598	1022	3216	3290
Private Schools	BA	9	16	25	8	11	19	3	13	16	7	12	19	5	14	19	32	66	98
	CCSET	4	0	4	4	1	5	3	0	3	1	0	1	2	3	5	14	4	18
	CFA	6	8	14	12	5	17	10	8	18	18	12	30	16	18	34	62	51	113
	CKH	0	59	59	0	55	55	0	64	64	0	61	61	0	50	50	0	289	289
	IA	10	9	19	10	8	18	5	8	13	8	8	16	5	5	10	38	38	76
	TA	5	3	8	5	3	8	1	1	2	8	2	10	8	7	15	27	16	43
	SJA	46	0	46	56	0	56	61	0	61	64	0	64	45	0	45	272	0	272
	Sea View	4	2	6	0	0	0	2	3	5	7	4	11	3	4	7	16	13	29
	7th-Day	27	32	59	32	19	51	21	14	35	15	21	36	12	23	35	107	109	216
	StA	38	20	58	24	22	46	26	25	51	24	23	47	11	17	28	123	107	230
	AEG F&H	4	1	5	5	2	7	4	1	5	0	0	0	0	0	0	13	4	17
		Total	153	150	303	156	126	282	136	137	273	152	143	295	107	141	248	704	697
All	G Total	1006	852	1858	801	765	1566	875	849	1724	707	782	1489	531	739	1270	3920	3987	7907

3.2-4 Other General Information on Student Enrolment across Pre-K, Primary and Secondary Schools

Figure 3.2-4-1: Cross-Section Student Enrolment in Pre-K, Primary and Secondary Schools by Gender 2010-11



Student enrolment in Grade 9 of Junior Secondary Schools has been added to Form 2 of Secondary Schools.

Figure 3.2-4-2: Age-in-Grade Distribution 2010-11: Primary Stage

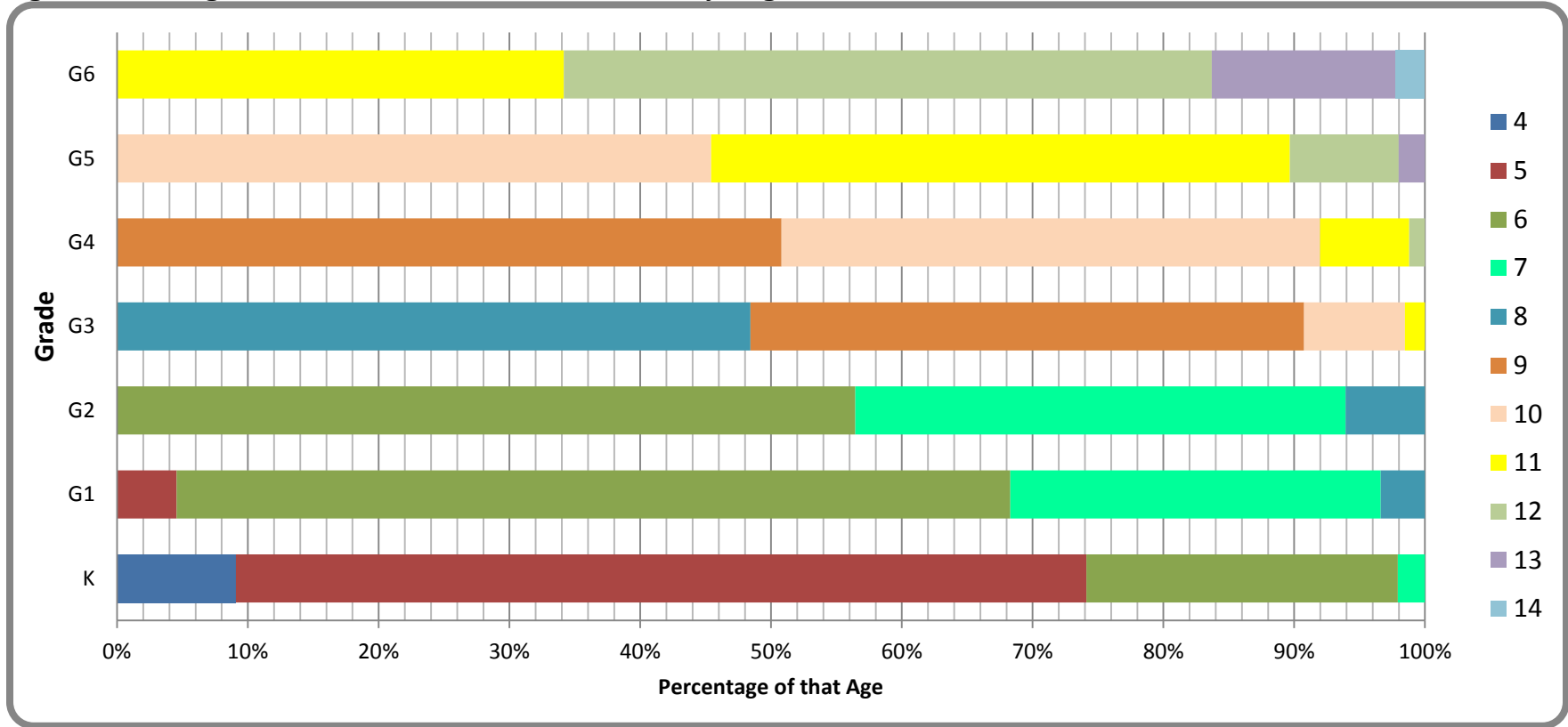


Figure 3.2-4-3: Age-in-Grade Distribution 2010-11: Secondary Stage

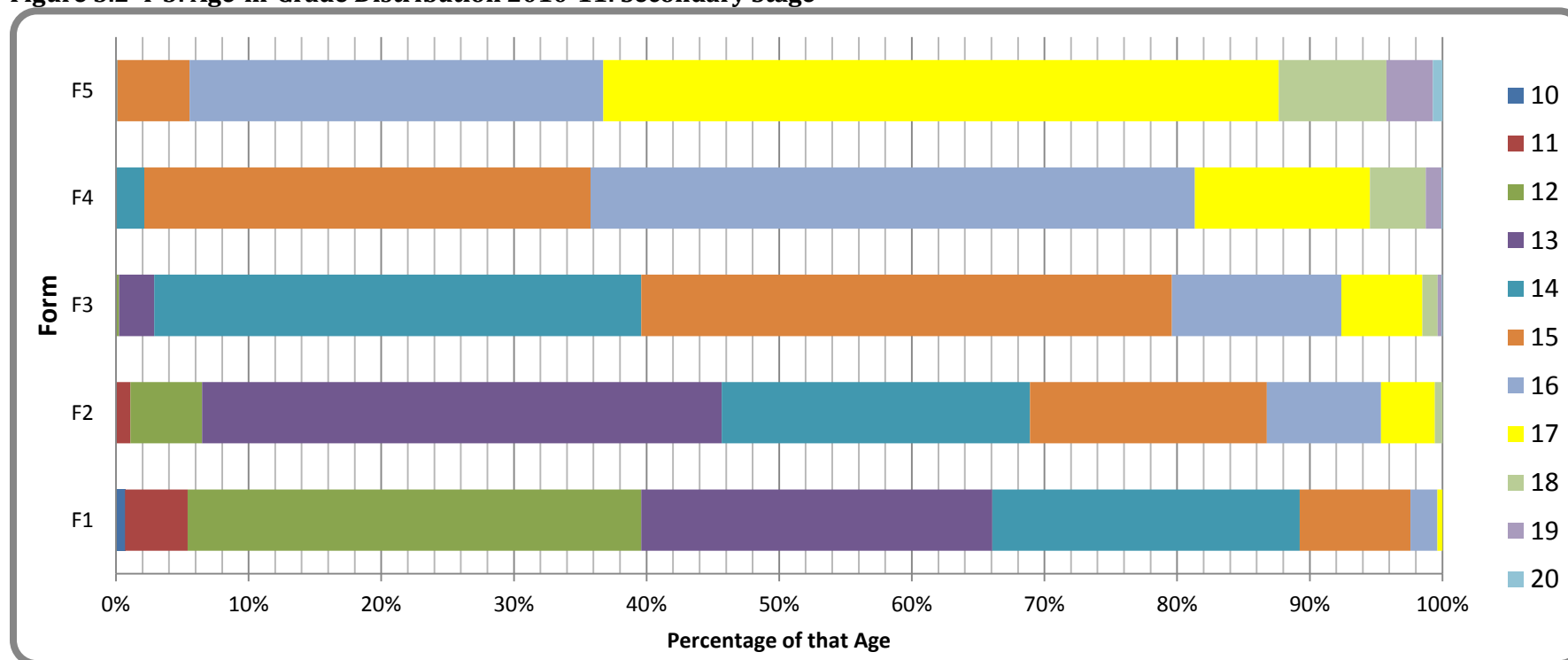
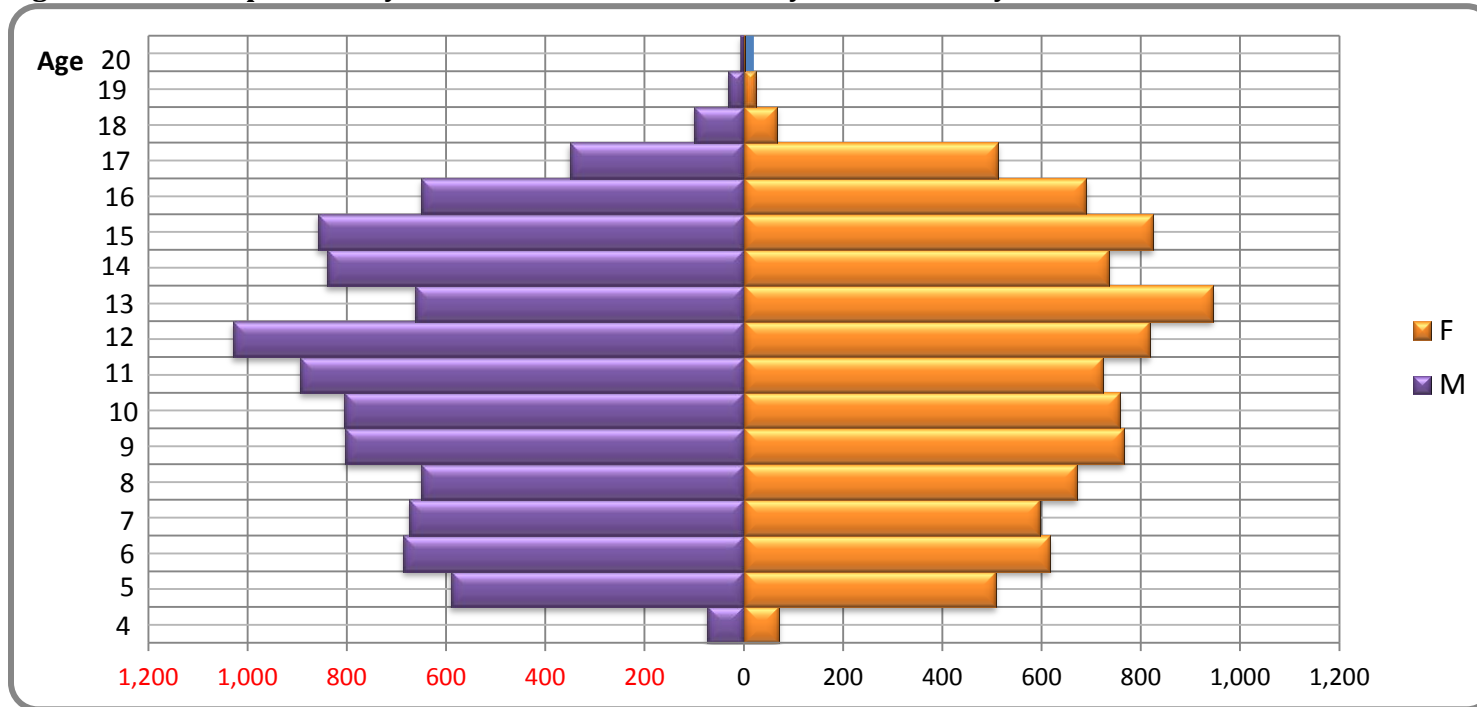


Table 3.2-4-1: Expected Age and Proportion of Overage Students for Each Grade 2010-11

Level	Grade/Form	Expected Age \mp 1 yr.	Percentage Overage for Grade
Primary	K	5/ 4 – 6	2.1
	G1	6/ 5 – 7	3.4
	G2	7/ 6 – 8	0.0
	G3	8/ 7 – 9	9.3
	G4	9/ 8 – 10	8.1
	G5	10/ 9 – 11	10.3

Secondary	G6	11/	10 – 12	16.3
	F1	12/	11 – 13	33.9
	F2	13/	12 – 14	31.1
	F3	14/	13 – 15	20.4
	F4	15/	14 – 16	18.7
	F5	16/	15 – 17	12.3

Figure 3.2-4-4: Population Pyramid for Students in Primary and Secondary Schools 2010-11



3.3 Non-National Enrolment in Primary and Secondary Schools

Proportion non-nationals in schools beginning school year 2010-11: 16.4% (2359/14374)

Proportion calculated as a percentage of those schools reporting the information.

Table 3.3-1: Primary and Junior Secondary Schools Percentage Non-nationals by Grade 2010-11

Grades	K	1	2	3	4	5	6	Totals Primary	Junior Secondary
Gov	3.8	3.8	9.3	11.0	10.4	10.5	10.3	8.7 (412/4698)	20.7 (65/314)
Priv	12.9	16.7	16.4	18.3	17.3	19.1	19.4	17.2 (799/4643)	8.8 (11/124)
Totals	8.6	10.6	13.3	14.8	13.8	14.3	14.1	12.9 (1211/9341)	17.3 (76/436)

Table 3.3-2: Secondary Schools Percentage Non-nationals by Form 2010-11

Forms	1	2	3	4	5	Totals
Gov	18.1	20.1	25.6	30.4	25.9	23.6 (862/3639)
Priv	21.6	17.7	23.1	25.9	20.8	21.9 (210/958)
Totals	18.7	19.6	25.1	29.4	24.4	23.3 (1072/4597)

Percentages based on those schools reporting the requested information

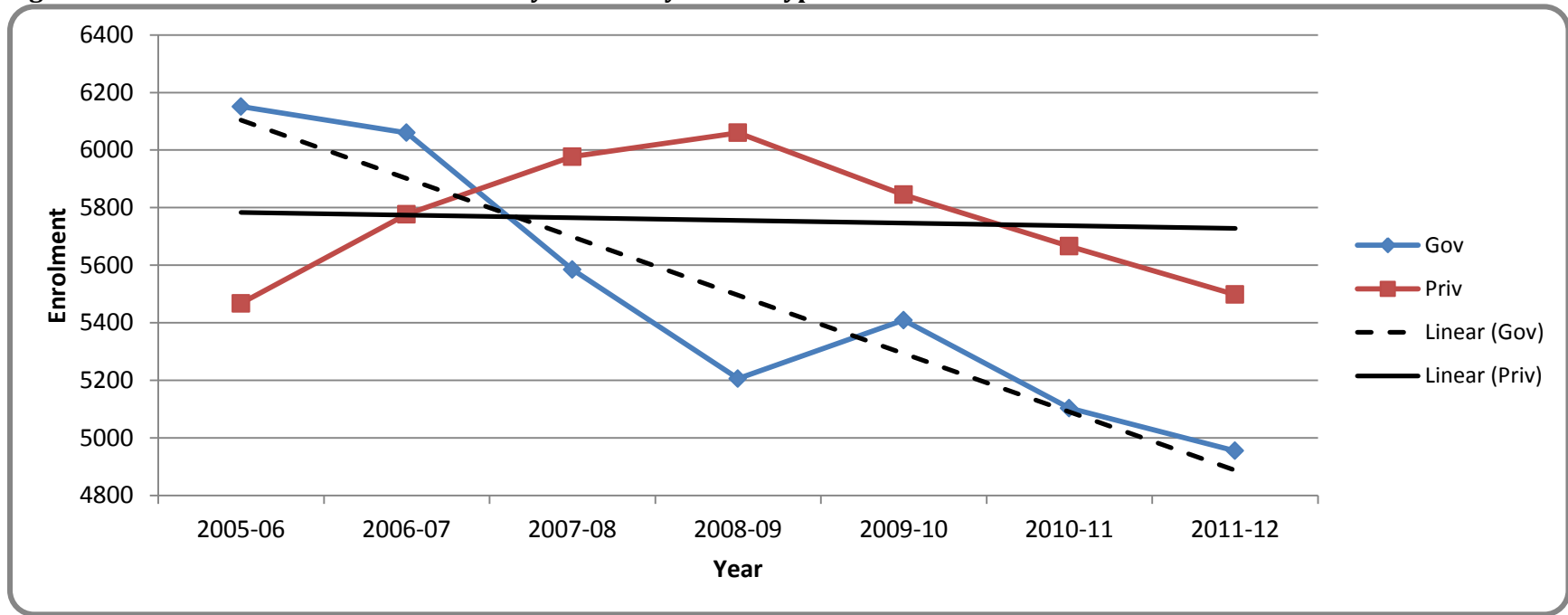
3.4 Trends in Enrolment across Primary and Secondary Schooling

Table 3.4-1: Enrolment in Primary Schools 2005-06 to 2010-11

Type	2005-06			2006-07			2007-08			2008-09		
	M	F	T	M	F	T	M	F	T	M	F	T
G	3204	2947	6151	3120	2940	6060	2924	2661	5585	2776	2430	5206
P	2748	2719	5467	2899	2878	5777	3045	2932	5977	3057	3003	6060
Tot	5952	5666	11618	6019	5818	11837	5969	5593	11562	5833	5433	11266
GER	108.1	100.9	104.5	107.3	101.7	104.5	104.5	96.0	100.2	100.3	91.5	95.8
Type	2009-10			2010-11			2011-12					
	M	F	T	M	F	T	M	F	T			
G	2979	2430	5409	2812	2291	5103	2722	2233	4955			
P	2948	2897	5845	2816	2850	5666	2691	2807	5498			
Tot	5927	5327	11254	5628	5141	10769	5413	5040	10453			
GER	100.0	88.1	94.0	NA	NA	NA	NA	NA	NA			

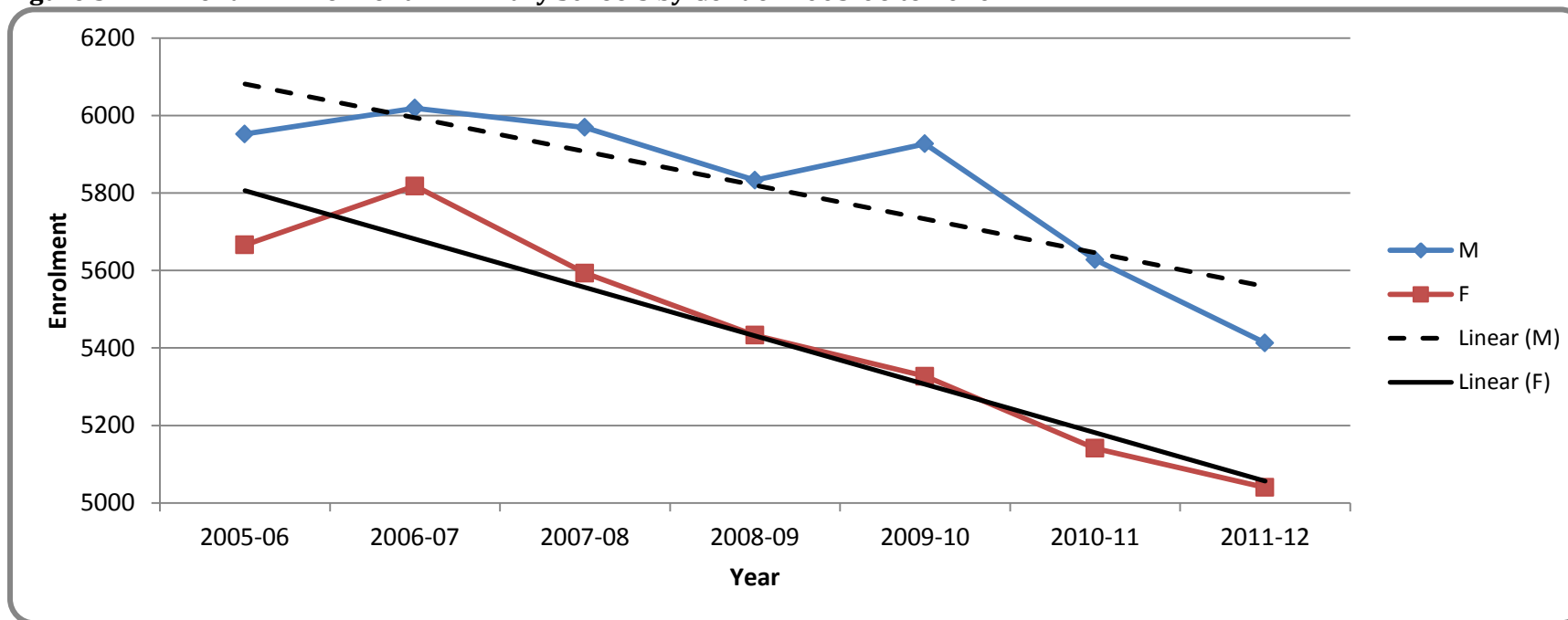
As 2010-11 has been a Census year, figures for GER (Gross Enrolment Rate) are unavailable for the school years 2010-11 and 2011-12 until the detailed breakdown of the Population Distribution by age and gender becomes available.

Figure 3.4-1: Trend in Enrolment in Primary Schools by School-type 2005-06 to 2011-12



Generally, enrolment in primary schools is trending downwards, with a decline of 10.0% over the 7-year period 2005-06 to 2011-12. Enrolment in private primary schools had been trending upwards, but appears to be plateauing.

Figure 3.4-2: Trend in Enrolment in Primary Schools by Gender 2005-06 to 2010-11

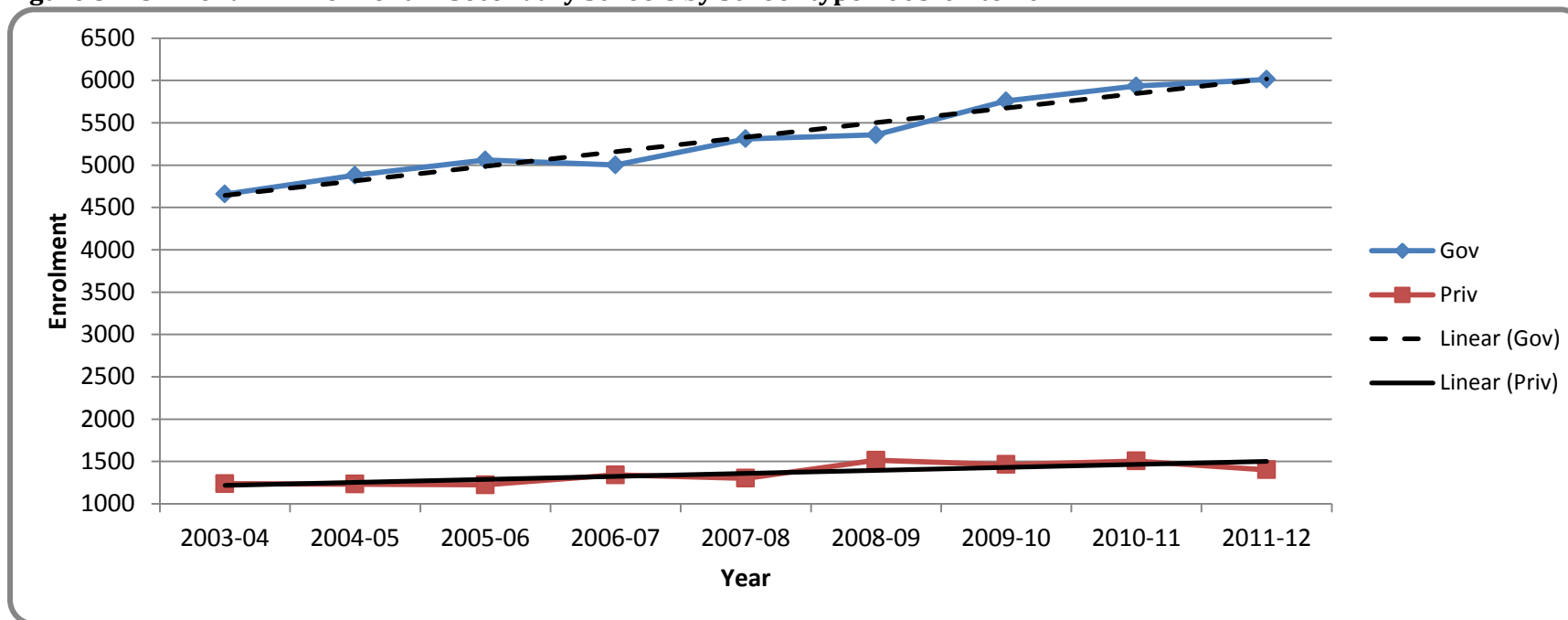


There has been a sharper decline in the enrolment of girls (11.0%) in primary schools than there has been for boys' enrolment (9.1%) over the 7-year period 2005-06 to 2011-12.

Table 3.4-2: Trends in Enrolment in Secondary Schools 2003-04 to 2010-11

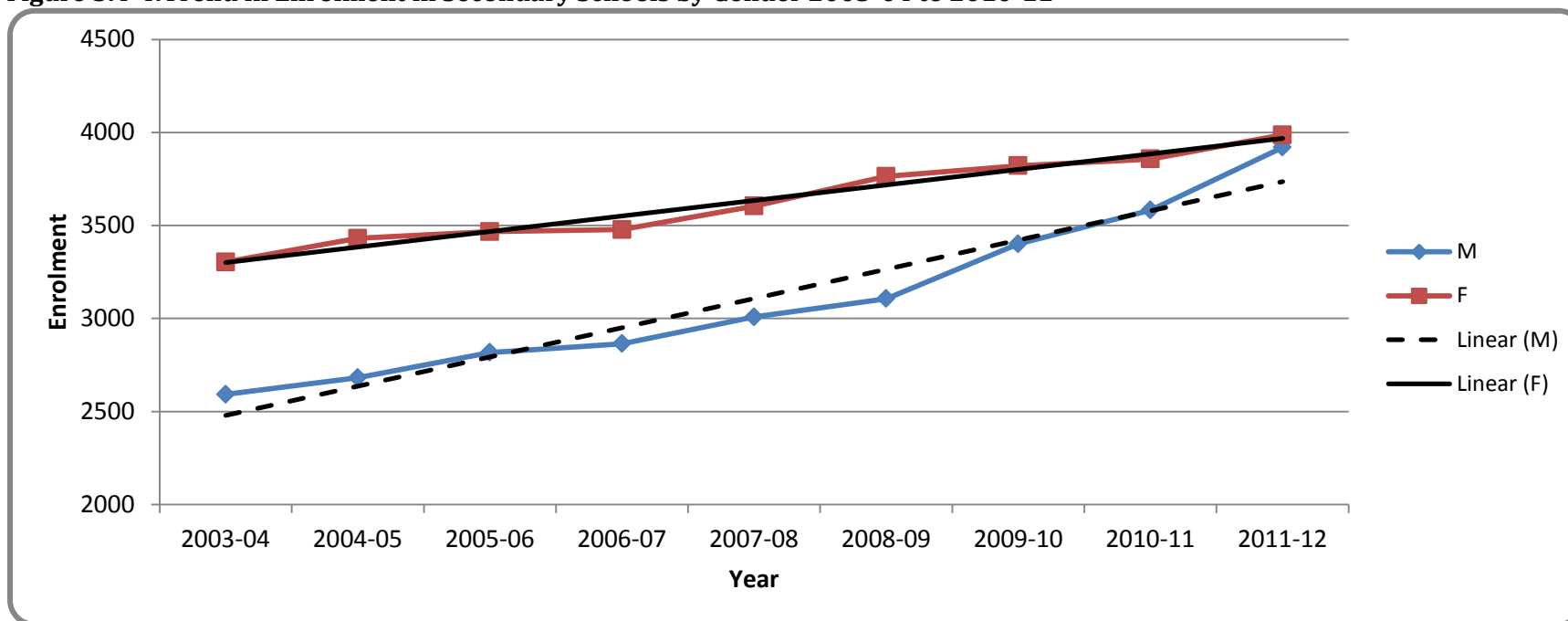
	2003-04			2004-05			2005-06			2006-07			2007-08		
	M	F	T	M	F	T	M	F	T	M	F	T	M	F	T
G	2013	2645	4658	2104	2777	4881	2240	2820	5060	2200	2802	5002	2356	2955	5311
P	579	658	1237	577	654	1231	577	647	1224	664	676	1340	652	649	1301
T	2592	3303	5895	2681	3431	6112	2817	3467	6284	2864	3478	6342	3008	3604	6612
	2008-09			2009-10			2010-11			2011-12					
	M	F	T	M	F	T	M	F	T	M	F	T			
G	2346	3011	5357	2660	3099	5759	2811	3124	5935	3216	2797	6013			
P	760	753	1513	741	722	1463	771	733	1504	704	697	1401			
T	3106	3764	6870	3401	3821	7222	3582	3857	7439	3920	3987	7907			

Figure 3.4-3: Trend in Enrolment in Secondary Schools by School-type 2003-04 to 2011-12



Generally, enrolment in secondary schools is trending upwards, with an increase of 34.1% over the 9-year period 2003-04 to 2011-12. Enrolment in government secondary schools has increased at a faster rate than that in private secondary schools (29.1% to 13.3% respectively). Increased enrolment in secondary schools can be attributed in part to increased pass rates at the primary CEE exams, as well as a move towards Universal Secondary Education (USE) as part of the government’s commitment to realizing this Caribbeanised Millennium Development Goal (MDG).

Figure 3.4-4: Trend in Enrolment in Secondary Schools by Gender 2003-04 to 2010-11



Generally, boys’ enrolment in secondary schools though lower than that for girls, has been increasing at a faster rate (51.2%) than that for girls (20.7%) over the 9-year period, showing boys to be *the* major beneficiaries thus far of the move towards USE.

Table 3.4-3: Trend in Gender Parity Index

Years	2005-06	2006-07	2007-08	2008-09	2009-10	2010-11	2011-12
Primary	0.96	0.97	0.94	0.93	0.90	0.91	0.93
Secondary	1.07	1.04	1.04	1.07	1.03	1.02	1.02

Secondary here includes enrolment in Junior Secondary Schools.

The Gender Parity Index (GPI) is the ratio of female to male students in schools. A ratio of 1 indicates parity (equal numbers) of female and male students. Figures greater than 1 indicate a ratio in favour of females, and figures less than 1 indicate a ratio in favour of males.

Table 3.4-4: Trends in Proportion of Non-national Enrolment in Schools

School Level	School-type	Year		
		2008-09	2009-10	2010-11
Primary	Government	10.4	8.6	8.7
	Private	15.6	15.1	17.2
	Total	13.1	11.8	12.9
Junior Secondary	Government	20.1	20.6	20.7
	Private	44.4	60.0	8.8
	Total	22.4	24.0	17.3
Secondary	Government	26.2	24.7	23.6
	Private	26.9	24.2	21.9
	Total	26.4	24.6	23.3
All Schools		18.3	16.8	16.4

3.5 Student Attendance Rates

Student attendance rates here are for the school year 2009-10.

Table 3.5-1: Student Attendance Rates in Primary Schools September 2009 – July 2010

Type	Gender	Sept	Oct	Nov	Dec	Jan	Feb	Mar	Apr	May	June	July	Year's Average
Gov	M	90.2	91.7	89.4	75.5	91.4	90.9	88.2	89.2	88.7	72.2	48.9	79.0
	F	91.7	90.9	90.7	81.2	89.8	91.1	89.6	90.2	90.9	76.3	54.2	89.2
	T	91.0	91.3	90.1	78.4	90.6	91.0	88.9	89.7	89.8	74.3	51.6	84.1
Priv	M	94.0	93.9	93.2	90.5	93.0	95.2	92.4	93.1	92.0	89.1	-	92.7
	F	95.8	92.4	93.4	88.9	92.9	94.5	90.5	91.9	92.9	85.2	-	91.8
	T	94.9	93.2	93.3	89.7	93.0	94.9	91.5	92.5	92.5	87.2	-	92.3
Total	M	92.1	92.8	91.3	83.0	92.2	93.1	90.3	91.2	90.4	80.7		85.9
	F	93.8	91.7	92.1	85.1	91.4	92.8	90.1	91.1	91.9	80.8		90.5
	T	92.9	92.2	91.7	84.0	91.8	92.9	90.2	91.1	91.1	80.7		88.2

Percentages based on 25/29 Government and 6/32 Private schools reporting the required information.

Table 3.5-2: Student Attendance Rate in Secondary Schools September 2009 – July 2010

Type	Gender	Sept	Oct	Nov	Dec	Jan	Feb	Mar	April	May	June	July	Year's Average
Gov	M	92.7	90.4	88.5	75.4	90.2	87.3	87.0	88.3	90.1	82.5	78.1	86.4
	F	93.5	91.6	88.8	74.3	90.3	89.2	87.8	88.4	89.9	86.2	87.6	80.6
	T	93.1	91.0	88.7	74.9	90.3	88.3	87.4	88.4	90.0	84.4	82.9	83.5
Priv	M	95.5	95.9	93.7	90.5	94.9	95.9	94.3	93.2	97.2	88.5	-	94.0
	F	95.3	94.8	93.3	91.8	94.4	95.5	95.6	95.0	95.5	94.0	-	94.5
	T	95.4	95.4	93.5	91.2	94.7	95.7	95.0	94.1	96.4	91.3	-	94.3
Total	M	94.1	93.2	91.1	83.0	92.6	91.6	90.7	90.8	93.7	85.5	78.1	90.2
	F	94.4	93.2	91.1	83.1	92.4	92.4	91.7	91.7	92.7	90.1	87.6	87.6
	T	94.3	93.2	91.1	83.0	92.5	92.0	91.2	91.2	93.2	87.8	82.9	88.9

Percentages based on 9/11 public schools and 4/10 private schools reporting the required information.

3.6 Wastage (Repetition and Dropout Rates) in Primary and Secondary Schools

Rates reported here are for school year 2009-10 and represents the situation as at July 2010. Data for the school year 2010-11 (as at July 2011) is still outstanding from some schools.

Table 3.6-1: Internal Efficiency for Primary Schools as at July 2010

	K			1			2			3			4			5			6			Grand Total		
	M	F	T	M	F	T	M	F	T	M	F	T	M	F	T	M	F	T	M	F	T	M	F	T
Rep	11.3	6.2	9.1	5.7	2.9	4.4	5.0	4.1	4.6	5.3	3.0	4.2	0.5	3.1	3.6	10.0	7.2	8.6	16.1	10.0	13.2	8.5	5.4	7.0
Dropout	1.0	1.2	1.1	0.1	0.9	0.5	0.9	0.6	0.8	0.5	0.3	0.4	0.5	1.2	0.8	0.4	0.8	0.5	0.0	0.0	0.0	0.5	0.7	0.6
Prom	87.7	92.6	89.8	94.2	96.2	95.1	94.1	95.3	94.6	94.2	96.7	95.4	99	95.7	95.6	89.6	92.0	90.9	83.9	90.0	86.8	91.0	93.9	92.4

Percentages expressed for those schools reporting the information.

For Dropouts, the following schools reported the requested information:

Five Islands, Greenbay, Urlings, Freetown, Parham, Potters, Bendals, Buckleys, CT Samuel, JT Ambrose, Sea View Farm, New Winthorpes, Pigotts, TNKirnon, Villa (Government Schools by Zones)

Grays Crescent, Visionaries for Christ, St Michaels, Sunnyside, Sunnydale, Better Chance, Gospel Light

Table 3.6-2: Internal Efficiency for Secondary Schools as at July 2010

	Form 1			Form 2			Form 3			Form 4			Form 5			Grand Total		
	M	F	T	M	F	T	M	F	T	M	F	T	M	F	T	M	F	T
Repetition	9.8	5.4	7.9	7.0	7.9	7.4	18.7	9.9	14.0	8.2	11.3	9.9	1.2	0.5	0.7	9.8	6.8	7.3
Dropout	1.3	0.7	1.0	1.3	2.9	2.1	2.6	2.3	2.4	2.7	2.2	2.4	0.3	1.0	0.5	1.7	1.8	1.8
Promotion	88.9	93.9	91.1	91.7	89.2	90.5	78.7	87.8	83.6	89.1	86.5	87.7	98.5	98.5	98.8	88.5	91.4	90.9

Percentages expressed for those schools reporting the information.

For Dropouts, all government schools except Pares and Sir Mc Chesney reported this information. Only two private schools, St. Joseph's and CCSET reported this information.

Table 3.6-3: Gender Parity Index (GPI) for Repeaters in Government Schools 2010-11

Grade/Form	K	G1	G2	G3	G4	G5	G6	Average	F1	F2	F3	F4	F5	Average
GPI	0.5	0.4	0.8	0.5	0.5	0.6	0.6	0.5	0.4	1.1	0.7	1.7	0.5	0.8

Again here, the Gender Parity Index (GPI) is the ratio of female to male students repeating each grade/form. A ratio of 1 indicates parity (equal numbers) of female and male students. Figures greater than 1 indicate a ratio which favours females, which in this case would mean greater number of females repeating, and figures less than 1 indicate a ratio in favour of males, which in this case means greater number of males repeating.

Figure 3.6-1: Cross-Section of Gender Patterns in Repetition 2009-10

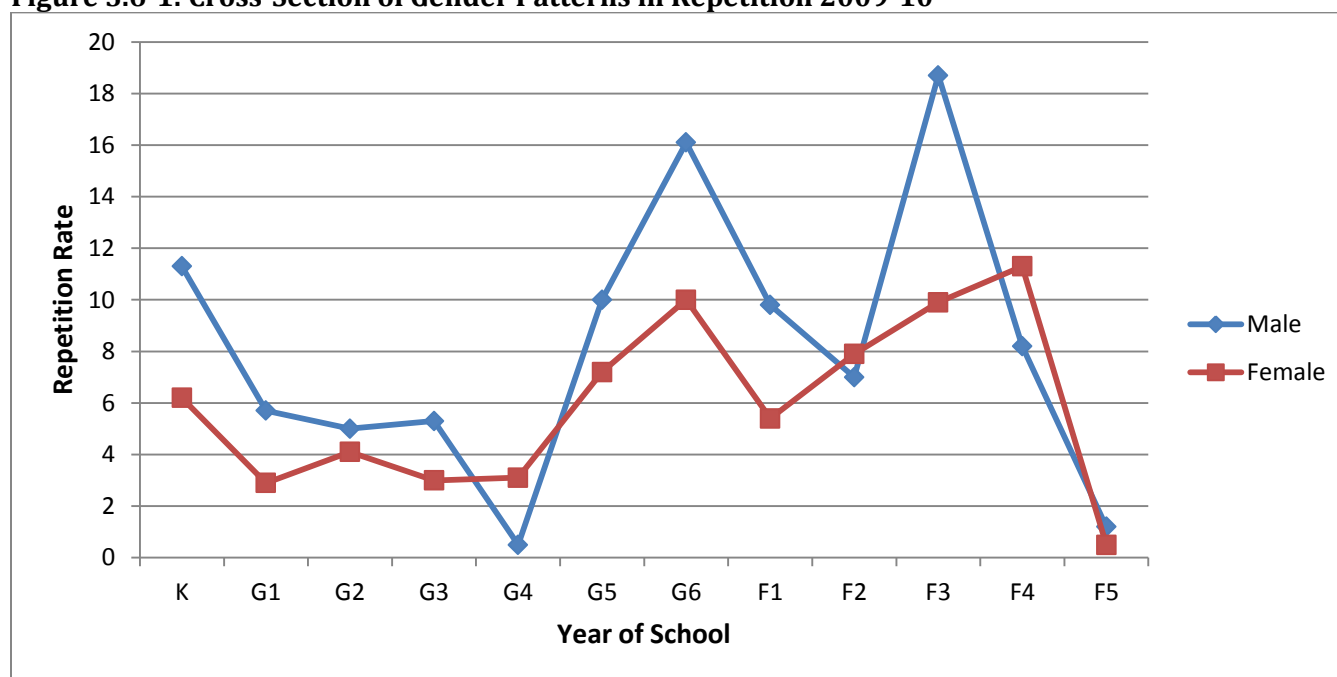


Figure 3.6-2: Cross-Section of Gender Patterns in Dropout Rates at Secondary 2009-10

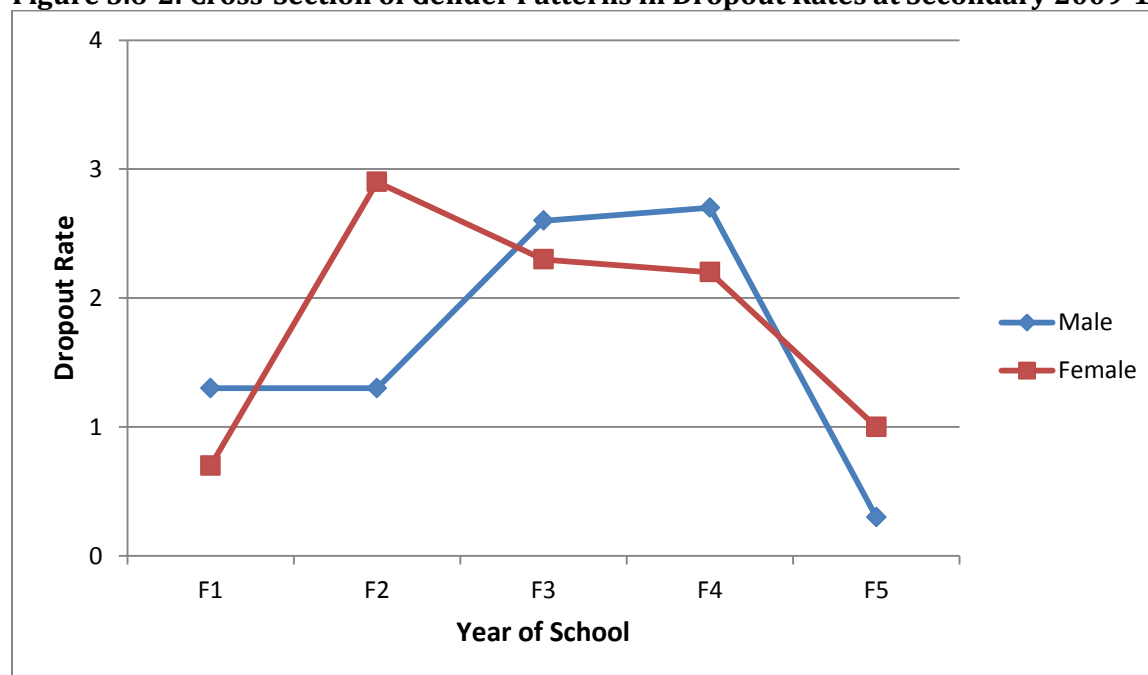


Table 3.6-4: Repetition and Dropout Rates 2007-08 to 2009-10

	Year	Primary			Junior Secondary			Secondary		
		M	F	T	M	F	T	M	F	T
Repetition	2007-08	6.3	3.7	5.0	23	15	21	20	12	15
	2008-09	6.2	5.8	6.0	13.5	10.1	12.7	15.0	10.7	12.5
	2009-10	8.5	5.4	7.0	NA	NA	NA	9.8	6.8	7.3
Dropouts	2007-08	0.8	1.5	1.1	6.8	5.8	6.5	1.5	2.6	2.1
	2008-09	1.1	1.1	1.1	7.4	3.9	6.4	3.3	2.1	2.6
	2009-10	0.5	0.7	0.6	NA	NA	NA	1.7	1.8	1.8

3.7 Social Safety Net Programmes in Schools

3.7-1 The School Meals Programme

The information provided in this Section is for school year 2010-11.

Table 3.7-1-1: Student Subscription to the School Meals Programme 2010 – 11

Zone	School on Programme	No. (Proportion) Males	No. (Proportion) Females	Total No. (Proportion) Students	No. of students who receive meals 'free'
1	Five Islands	157 (73%)	178 (89%)	335 (81%)	0 (0%)
	Golden Grove	158 (73%)	148 (79%)	306 (76%)	0 (0%)
	Greenbay*	160 (57%)	135 (70%)	295 (62%)	38 (8%)
	Jennings	109 (83%)	75 (80%)	184 (81%)	0 (0%)
	Totals Zone 1	584 (69%)	536 (80%)	1120 (74%)	38 (3%)
2	Freetown	22 (85%)	32 (97%)	54 (92%)	1 (2%)
	Pares	52 (81%)	59 (98%)	111 (90%)	6 (5%)
	Parham	41 (87%)	20 (83%)	61 (86%)	0 (0%)
	Newfield	25 (76%)	24 (100%)	49 (88%)	0 (0%)
	Willikies	30 (71%)	41 (100%)	71 (86%)	11 (13%)
	Totals Zone 2	170 (80%)	176 (97%)	346 (88%)	18 (5%)
3	Freemansville	42 (100%)	43 (100%)	92(100%)	3 (4%)
	JT Ambrose	103 (77%)	95 (93%)	198 (84%)	20 (8%)
	Liberta	55 (60%)	53 (72%)	108 (65%)	10 (6%)
	Sea View Farm	67 (79%)	42 (86%)	109 (81%)	0 (0%)
	Totals Zone 3	267 (76%)	233 (87%)	500 (81%)	33 (5%)
4	Cedar Grove	64 (91%)	71 (88%)	135 (89%)	4 (3%)
	New Winthorpes	33 (77%)	42 (93%)	75 (85%)	0 (0%)
	Pigotts	107 (88%)	84 (85%)	191 (87%)	10 (5%)
	TN Kirnon*	111 (64%)	90 (93%)	201 (74%)	27 (10%)

	Villa *	129 (58%)	123 (75%)	252 (65%)	21 (5%)
	Totals Zone 4	444 (71%)	410 (84%)	854 (77%)	62 (6%)
Totals		1465 (72%)	1355 (84%)	2820 (77%)	151 (4%)

* Junior Secondary School in 2010-11 so totals would include students in this section of the school.

Zonal percentages expressed as proportion of participating schools.

Between September 2010 and June 2011, the School Meals Programme served 312 918 meals. Expenditure on food items for meals (this excludes other expenses such as delivery, salaries, operating costs etc.), was EC\$2 038 914.26

Although speculative, it is believed that the relatively lower subscription of schools such as Villa and Greenbay to the programme is in part due to the location of these schools in the heart of their catchment areas, so that a marked proportion of students go home for lunch. It is notable though that a higher proportion of girls are registered on the programme than are boys although the Country Poverty Assessment (Kairi 2007) suggested that a higher proportion of boys were living below the poverty line.

3.7-2 The Schools' Uniform Programme

The information in this section is for the beginning of school year 2011-12.

Table 3.7-2-1: Subscription to the Schools' Uniform Programme

No. parents registered	No. children registered	No. vouchers issued	Budget allocation
8092	12 137	36 411	EC\$ 2 000 000

Separate vouchers are issued for each part of the uniform. Therefore, at least two vouchers would be issued for most boys' uniforms, one for the shirt and one for the pant. In 2011, parents could claim vouchers for one uniform per child.

3.7-3 Estimates of Public Spending on Education

These costs were estimated based on figures for the 2009-10 budget year. An updated estimate of costs was not possible due to lack of information from the relevant sources.

Table 3.7-3-1: Public Spending on Education in ECD

Level	Government Schools		Private Schools	
	Total spent (BOE and MOE)	Cost per child	Total spent (BOE and MOE)	Cost per child
Primary +Junior Secondary	\$31 607 657	\$5225	\$2 280 355	\$385
Secondary	\$31 029 564	\$5388	\$812 722	\$548

Spending for Government Schools would include salaries and wages, School Meals, school uniforms, plus allocations covered by the Board of Education (BOE), e.g. textbooks, furniture, other general supplies, school maintenance, etc. For private schools these costs would include school uniforms and allocations from the BOE, e.g. textbooks and other general supplies. The major cost *not* included in these estimates is that for the school bus programme.

Table 3.7-3-2: Estimated Cost of Repetition in Government Primary and Secondary Schools 2009-10

	No. of repeaters			Cost per child/ECD	Total/ECD
	M	F	T		
Primary	399	215	614	\$5225	\$3 208 150
Secondary	276	222	498	\$5388	\$2 683 224
Total	675	437	1112	–	\$5 891 374

Numbers of repeaters based on 23/29 and 7/11 government primary and secondary schools respectively reporting; costs are therefore most likely under-estimated.

Although there is a cost to the government for students in private schools who repeat, this cost was not estimated for these schools as fewer than 50% report on the number of repeaters in their school.

4. Results of Examinations

4.1 The Grades 2 and 4 National Assessments 2010 and 2011

Table 4.1-1: Overview – Percentage Students Scoring $\geq 50\%$ of Marks

Subjects	2007		2008		2009		2010		2011	
	Gr4	Gr2	Gr4	Gr2	Gr4	Gr2	Gr4	Gr2	Gr4	Gr2
Language Arts	63%		59%	70%	57%	53%	60%	72%	62%	79%
Mathematics	35%		30%	61%	30%	66%	36%	70%	39%	73%

4.1-1 National Assessments 2010

Table 4.1-1-1: Results of the Grade 2 National Assessment 2010

Subject	Type	No. sitting		Above GL		At GL		Slightly Below GL		Below GL	
		M	F	M	F	M	F	M	F	M	F
Language Arts	Gov	345	272	21 (6%)	51 (19%)	128 (37%)	130 (48%)	90 (26%)	51 (19%)	106 (31%)	40 (15%)
	Priv	386	355	77 (20%)	122 (34%)	207 (54%)	178 (50%)	55 (14%)	40 (11%)	47 (12%)	15 (4%)
	Tot	731	627	98 (13%)	173 (28%)	335 (46%)	308 (49%)	145 (20%)	91 (15%)	154 (21%)	55 (9%)
Maths	Gov	328	264	17 (5%)	28 (11%)	112 (34%)	129 (49%)	93 (29%)	57 (22%)	106 (32%)	50 (19%)
	Priv	404	367	69 (17%)	75 (20%)	202 (50%)	208 (57%)	93 (23%)	61 (17%)	40 (10%)	23 (6%)
	Tot	732	631	86 (12%)	103 (16%)	314 (43%)	337 (53%)	186 (25%)	118 (19%)	146 (20%)	73 (12%)

GL refers to Grade Level

Figure 4.1-1-1: Comparison of Results for 2010 Grade 2 Language Arts by Gender, Zone and School-type

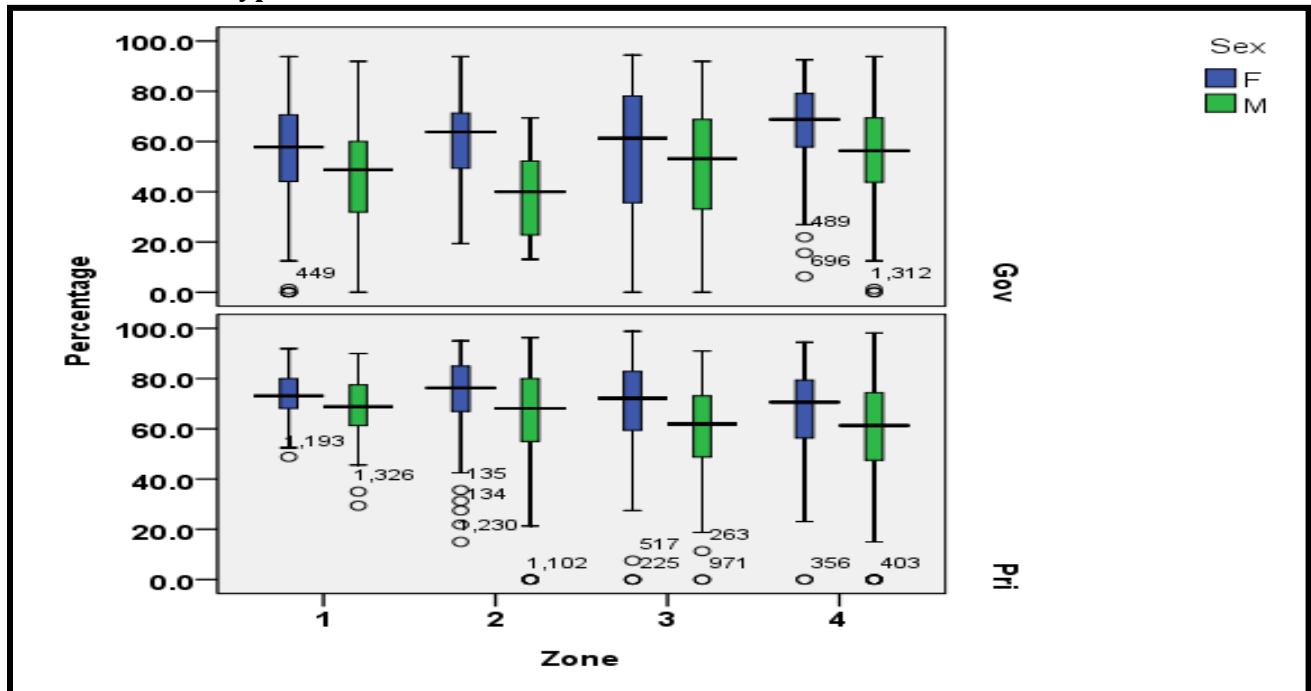
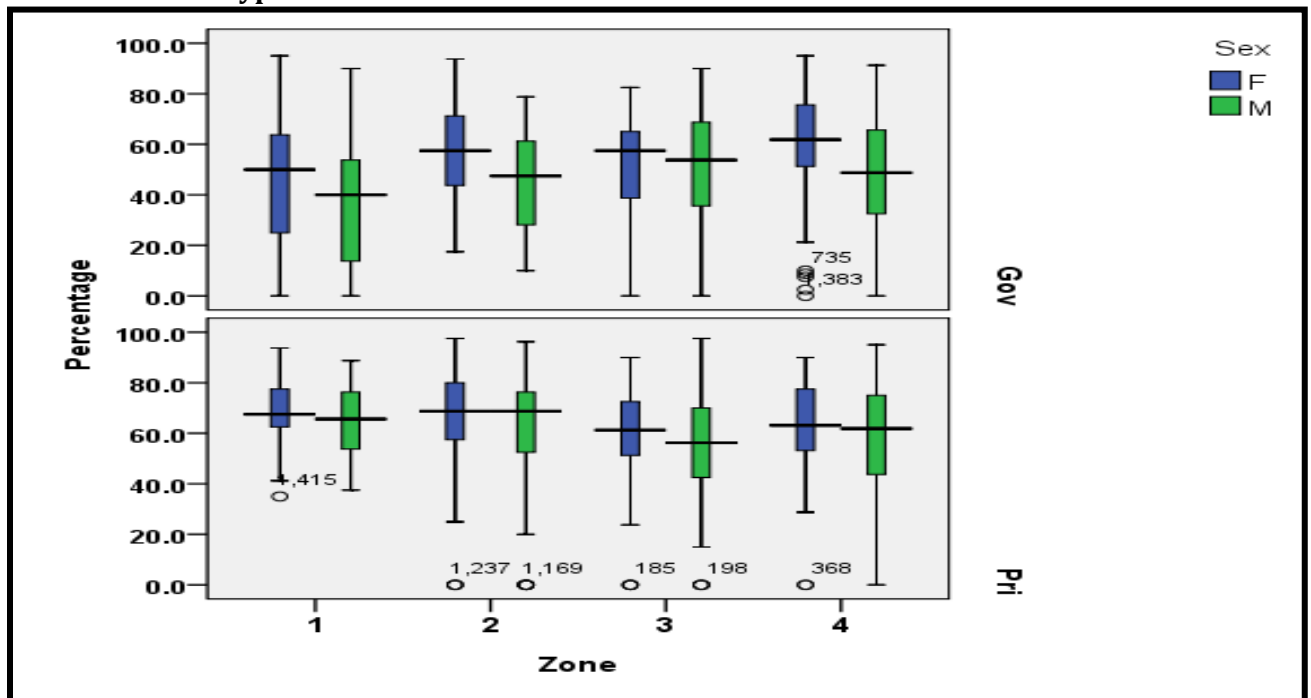


Figure 4.1-1-2: Comparison of Results for 2010 Grade 2 Mathematics by Gender, Zone and School-type



In the box plot, the box shows the range of marks of the middle 50% of students. The longer the box, the more variability there is in the data. The black line drawn across the box shows the median mark. The Whiskers (lines drawn at top and bottom of the box) show, approximately, the top and bottom 25% of marks. The dots/open circles represent outliers, marks which were too far from others and so were not included in the analysis.

Table 4.1-1-2: Results of the Grade 4 National Assessment 2010

Subject	Type	No. sitting		Above GL		At GL		Slightly Below GL		Below GL	
		M	F	M	F	M	F	M	F	M	F
Language Arts	Gov	409	390	6 (2%)	17 (4%)	83 (20%)	160 (41%)	113 (28%)	111 (29%)	207 (51%)	102 (26%)
	Pri	352	343	37 (11%)	65 (19%)	187 (53%)	222 (65%)	75 (21%)	39 (11%)	53 (15%)	17 (5%)
	Tot	761	733	43 (6%)	82 (11%)	270 (36%)	382 (52%)	188 (25%)	150 (21%)	260 (34%)	119 (16%)
Maths	Gov	396	382	5 (1%)	4 (1%)	53 (13%)	54 (14%)	76 (20%)	114 (30%)	262 (66%)	210 (55%)
	Pri	372	383	20 (5%)	19 (5%)	140 (38%)	141 (37%)	80 (22%)	117 (31%)	132 (36%)	106 (28%)
	Tot	768	765	25 (3%)	23 (3%)	193 (25%)	195 (26%)	156 (20%)	231 (30%)	394 (51%)	316 (41%)

Figure 4.1-1-3: Comparison of Results for 2010 Grade 4 Language Arts by Gender, Zone and School-type

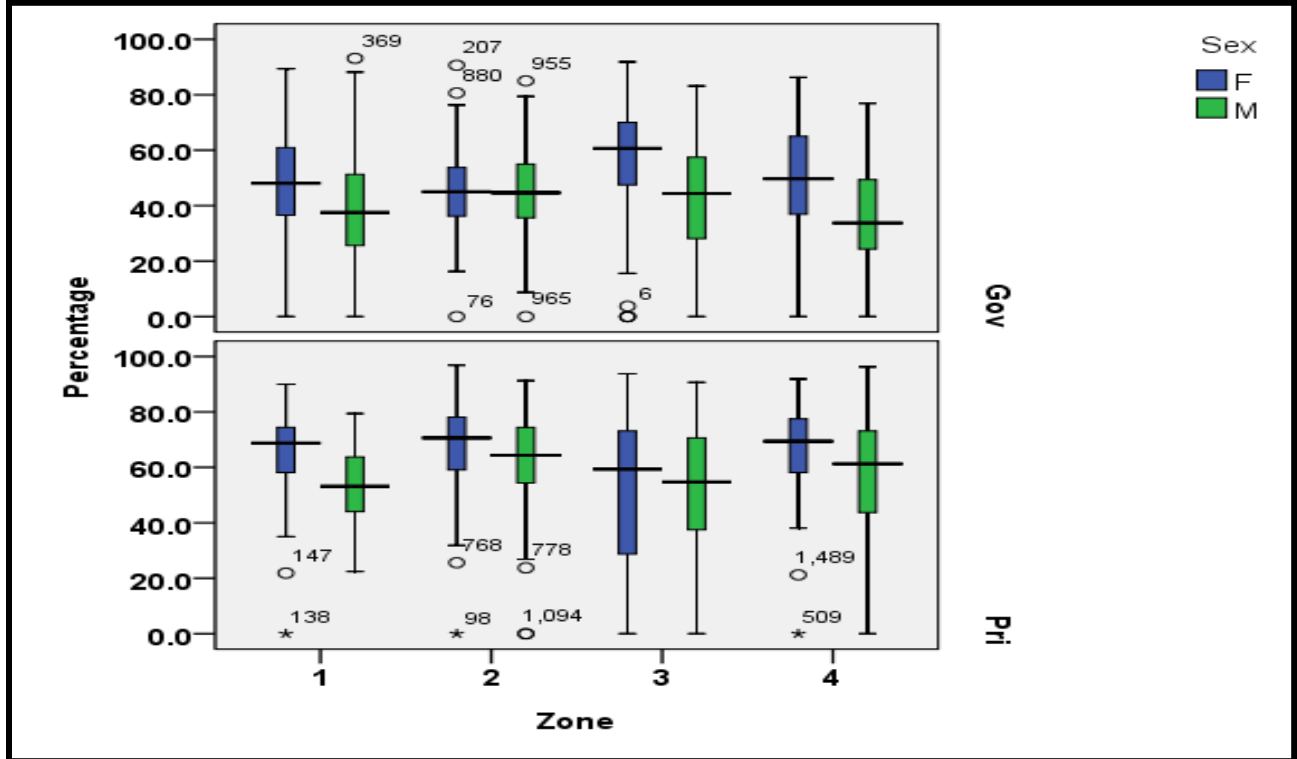
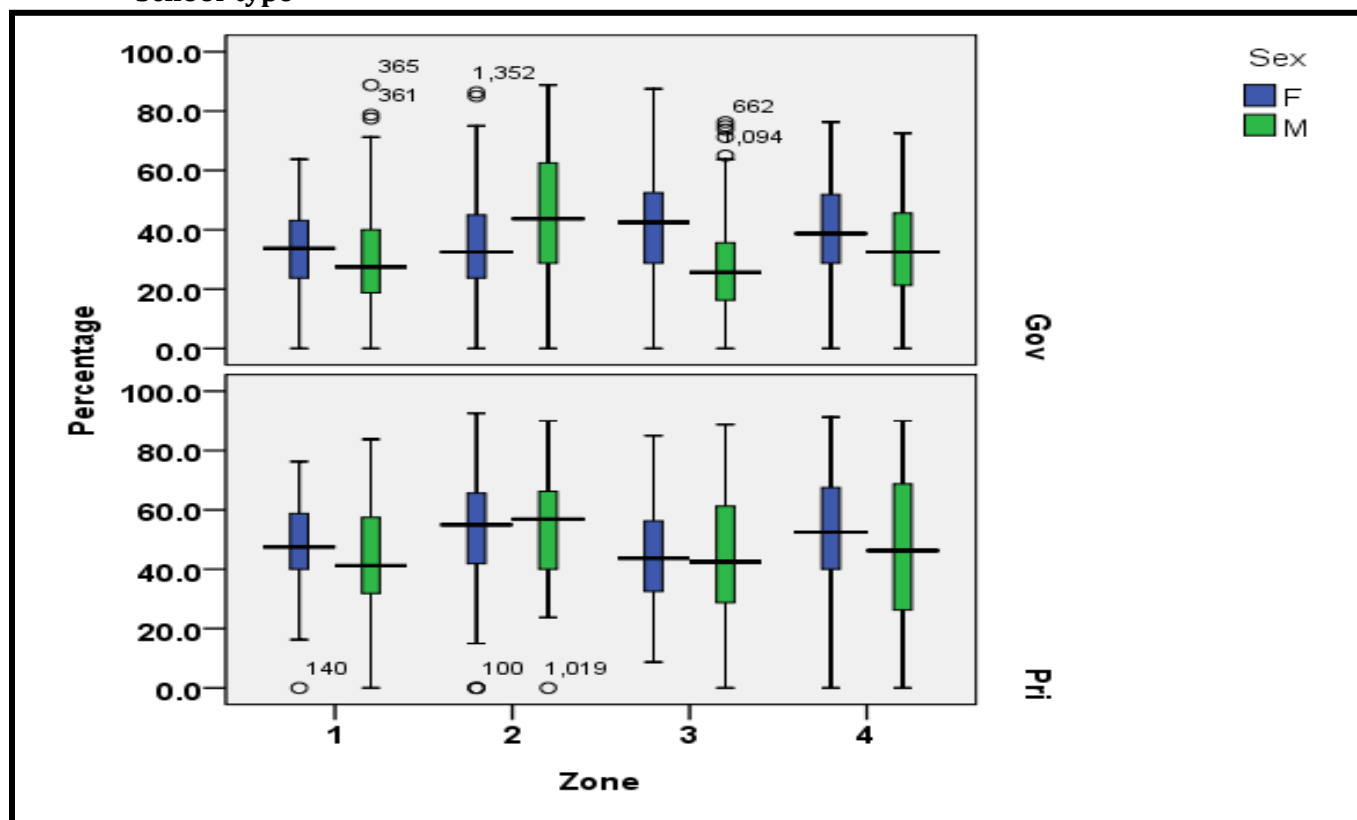


Figure 4.1-1-4: Comparison of Results for 2010 Grade 4 Mathematics by Gender, Zone and School-type



4.1-2 National Assessments 2011

Table 4.1-2-1: Results of the Grade 2 National Assessment 2011

Subject	Type	No. sitting		Above GL		At GL		Slightly Below GL		Below GL	
		M	F	M	F	M	F	M	F	M	F
Language Arts	Gov	326	252	23 (7%)	34 (14%)	144 (44%)	150 (60%)	76 (23%)	48 (19%)	83 (26%)	20 (8%)
	Pri	315	369	82 (26%)	153 (42%)	161 (51%)	161 (44%)	55 (18%)	46 (13%)	17 (5%)	9 (2%)
	Tot	641	621	105 (16%)	187 (30%)	305 (48%)	311 (50%)	131 (20%)	94 (15%)	100 (16%)	29 (5%)
Maths	Gov	333	254	39 (12%)	35 (14%)	135 (41%)	109 (43%)	84 (25%)	70 (28%)	75 (23%)	40 (16%)
	Pri	319	362	60 (19%)	90 (25%)	166 (52%)	177 (49%)	61 (19%)	61 (19%)	32 (10%)	26 (7%)
	Tot	652	616	99 (15%)	125 (20%)	301 (46%)	286 (46%)	145 (22%)	139 (23%)	107 (16%)	66 (11%)

Figure 4.1-2-1: Comparison of Results for 2011 Grade 2 Language Arts by Gender and Zone

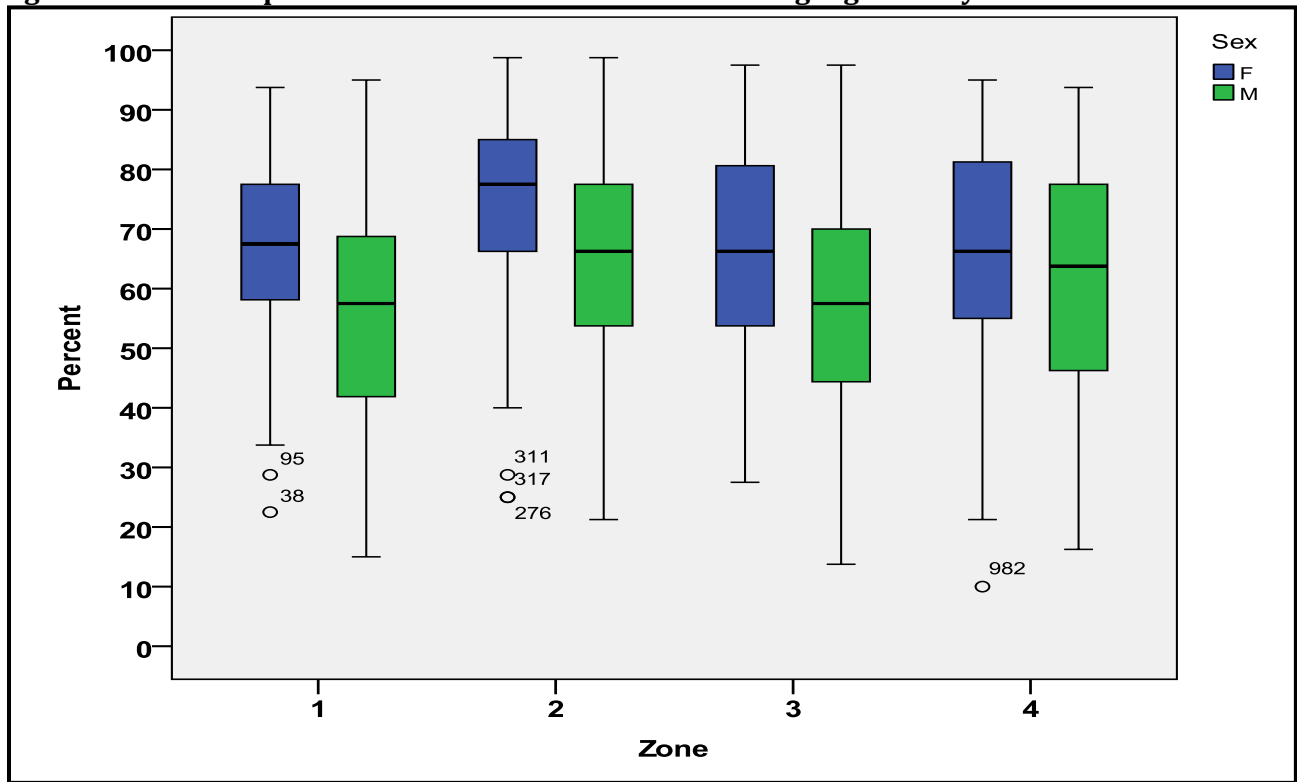


Figure 4.1-2-2: Comparison of Results for 2011 Grade 2 Mathematics by Gender and Zone

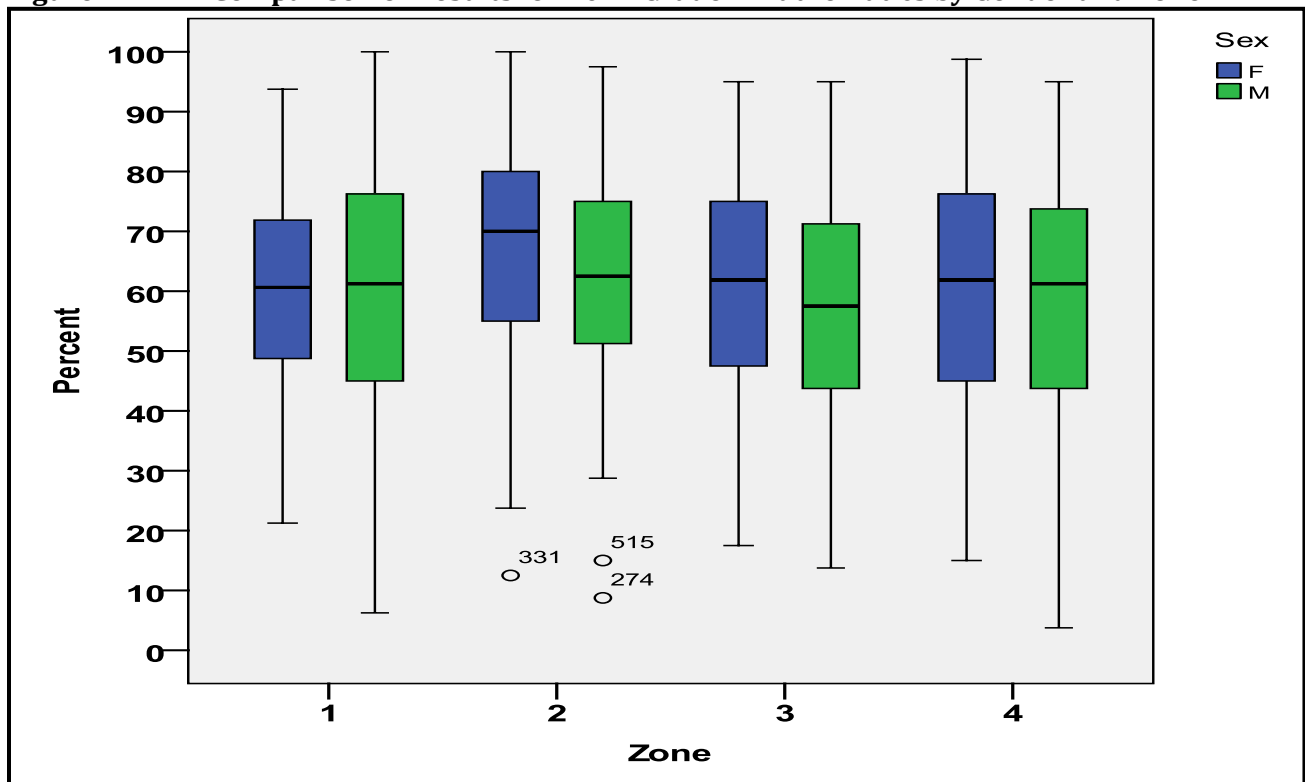


Table 4.1-2-2: Results of the Grade 4 National Assessment 2011

Subject	Type	No. sitting		Above GL		At GL		Slightly Below GL		Below GL	
		M	F	M	F	M	F	M	F	M	F
Language Arts	Gov	392	334	7 (2%)	19 (6%)	102 (26%)	142 (43%)	121 (31%)	107 (32%)	162 (41%)	66 (20%)
	Pri	326	338	44 (14%)	60 (18%)	155 (48%)	201 (60%)	71 (22%)	56 (17%)	56 (17%)	21 (6%)
	Tot	718	672	51 (7%)	79 (12%)	257 (36%)	343 (51%)	192 (27%)	163 (24%)	218 (30%)	87 (13%)
Maths	Gov	387	332	5 (1%)	5 (2%)	45 (12%)	71 (21%)	88 (23%)	113 (34%)	249 (64%)	143 (43%)
	Pri	318	334	32 (10%)	31 (9%)	105 (33%)	125 (37%)	76 (24%)	97 (29%)	105 (33%)	81 (24%)
	Tot	705	666	37 (5%)	36 (5%)	150 (21%)	196 (29%)	164 (23%)	210 (32%)	354 (50%)	224 (34%)

Figure 4.1-2-3: Comparison of Results for 2011 Grade 4 Language Arts by Gender and Zone

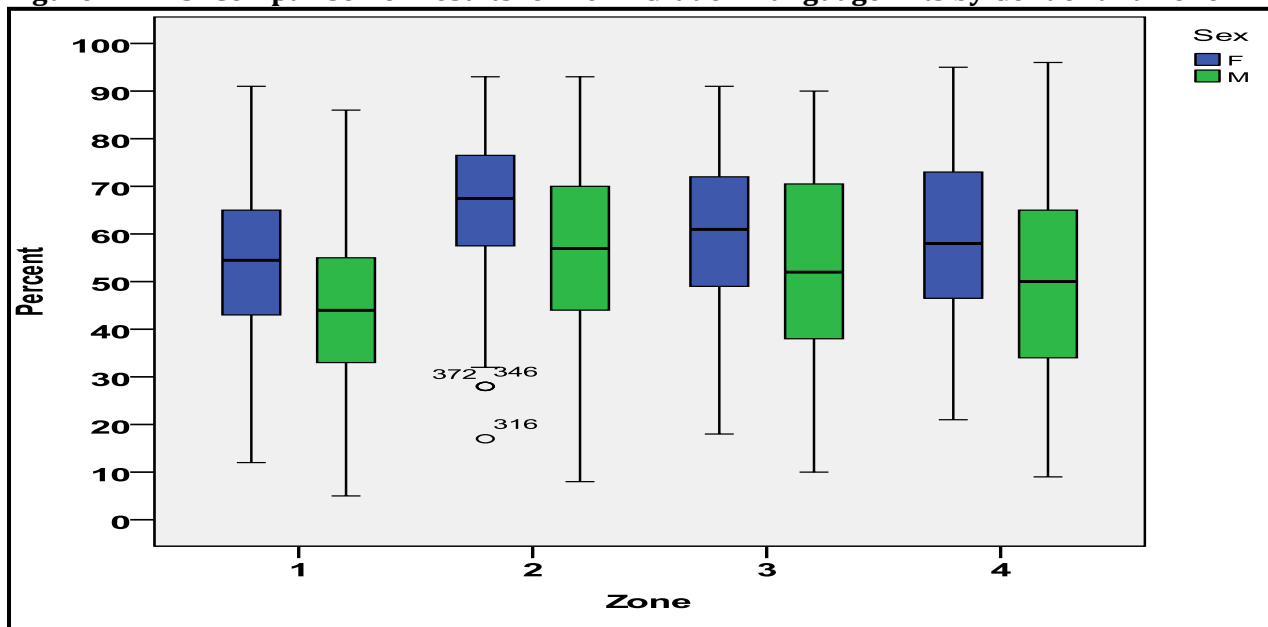
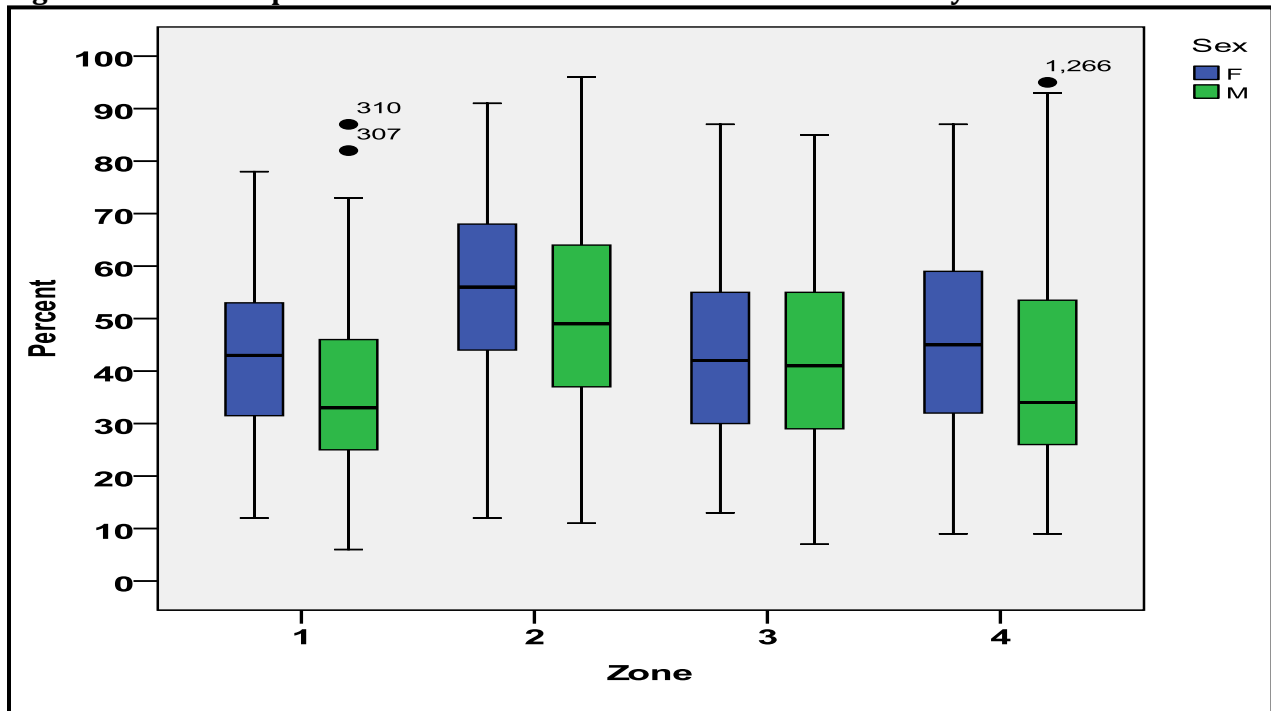


Figure 4.1-2-4: Comparison of Results for 2011 Grade 4 Mathematics by Gender and Zone



4.2 The Common Entrance Examinations 2010 and 2011

4.2-1 CEE 2010

Table 4.2-1-1: CEE 2010 Comparison of Means across Subjects by Gender and School-type

Subjects	Government/928			Private/753		
	Males/482	Females/446	Tot Gov	Males/380	Females/373	Tot Pri
LA	49.9	57.6	53.6	61.6	66.0	63.8
Maths	51.2	58.5	54.7	68.4	69.7	69.0
Science	48.4	53.8	51.0	61.5	62.8	62.1
SS	43.9	48.7	46.2	55.5	57.8	56.6
All	193.3	218.5	205.4	246.9	256.2	251.5

LA – Language Arts, SS – Social Studies

Table 4.2-1-2: CEE 2010 Comparison of Mean Total by Zone, Gender and School-type

Zones	Government Schools			Private Schools			All Schools		
	M	F	T	M	F	T	M	F	T
1	187.6	214.3	201.2	216.2	229.1	223.1	196.0	219.0	207.9
2	206.3	230.4	217.4	264.2	271.4	268.0	244.8	260.4	252.8
3	177.8	212.2	191.2	248.1	249.7	248.8	208.5	230.5	217.5
4	213.3	223.0	218.6	252.4	262.7	257.4	228.3	236.2	232.4
Totals	193.3	218.5	205.4	246.9	256.2	251.5	217.0	235.7	226.1

Figure 4.2-1-2: CEE 2010 Comparison of Total Scores by Gender, Zone and School-type

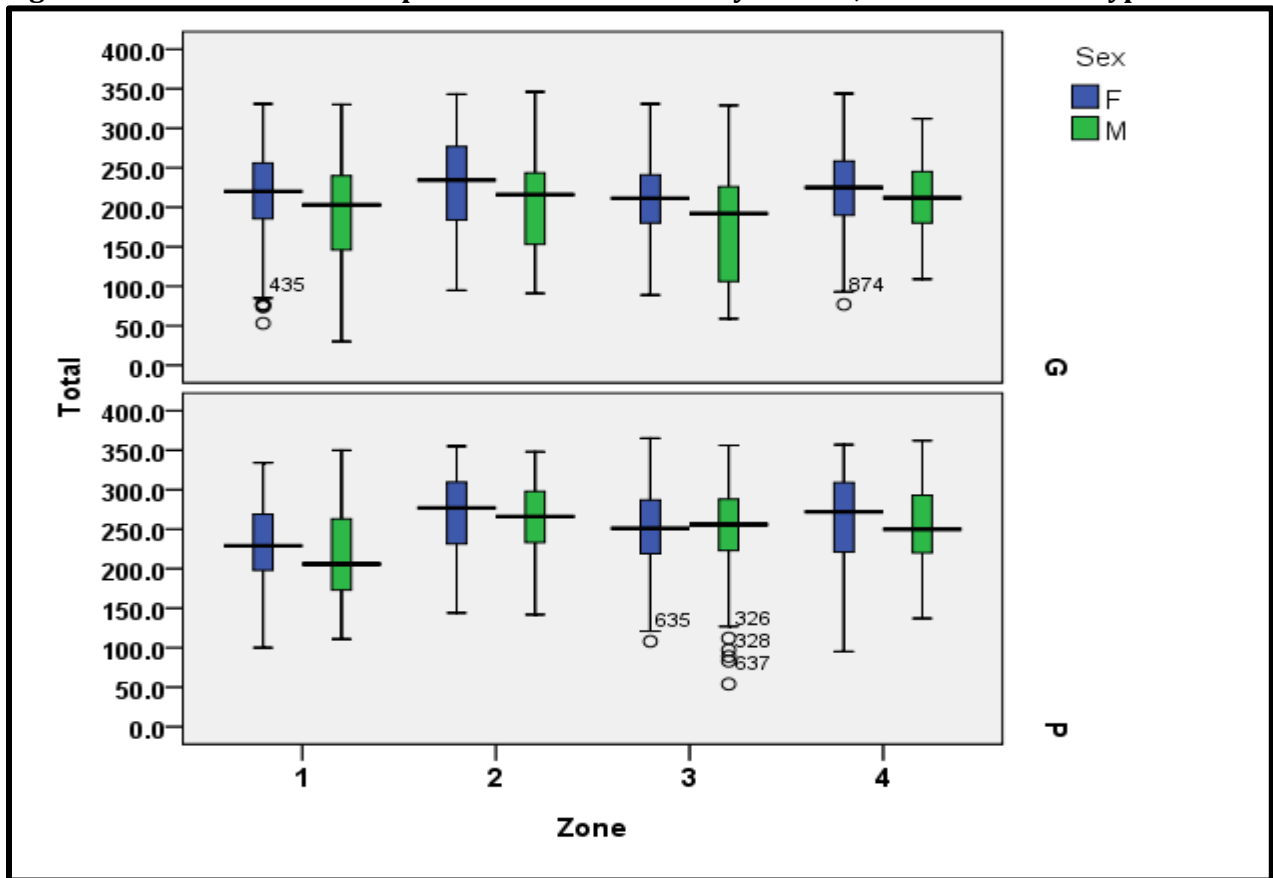


Table 4.2-1-3: Top Schools in CEE 2010

Government Schools								Private Schools							
School	No. stu-dents	Pass Rate (%)	Mean Scores					Name	No. stu-dents	Pass Rate (%)	Mean Scores				
			LA	M	S	SS	Total				LA	M	S	SS	Total
Freetown	11	100	69.3	70.5	62.0	54.2	255.9	Baptist Academy	22	100	78.8	92.4	80.0	73.8	325.1
Old Road	10	90	62.8	66.8	66.2	58.5	254.3	St. Andrew's	21	100	79.5	85.2	77.0	66.2	308.0
Cedar Grove	20	100	62.5	67.7	61.8	58.2	250.1	St. Nicholas	14	100	76.0	86.9	75.4	68.6	306.9
TN Kirnon	26	92	55.8	62.5	66.4	56.7	241.4	Minoah Magnet	12	100	73.1	81.4	75.5	69.1	299.1
Pares	14	79	58.4	68.1	60.4	54.2	241.2	Sunnydale	21	100	75.2	82.0	73.5	64.6	295.3
Bethesda	10	90	65.3	68.1	50.0	56.5	239.9	Seaview Academy	20	100	69.0	83.9	68.7	61.2	282.7
Five Islands	44	98	59.6	71.0	55.7	52.2	238.4	Sunnyside	71	97	65.8	79.8	67.0	61.4	273.9
School for the Deaf	3	100	54.7	75.3	48.7	58.0	236.7	St. John's Lutheran	20	95	66.4	75.1	68.4	62.4	272.2
Bolans	22	91	69.4	61.0	55.2	49.0	234.6	St. John's Catholic	69	99	69.9	72.5	66.9	62.3	271.6
Cobbs Cross	14	86	61.6	58.1	51.4	56.0	227.1	Gray's Crescent	20	100	73.1	70.2	63.7	62.0	268.9
Pigotts	33	94	59.0	57.3	59.7	49.9	225.9	Kids Unlimited	13	100	65.2	74.7	67.8	59.8	267.5
Buckleys	17	82	55.6	65.1	53.1	50.1	223.8	Grace Christian	26	96	67.3	74.1	63.3	62.4	267.1
Willikies	10	70	59.5	56.7	61.6	44.7	222.5	Gospel Light	10	100	72.2	70.1	63.3	59.5	265.1
Holy Trinity	38	76	55.7	60.1	48.9	53.6	218.2	Wesleyan Jr	43	100	61.5	68.8	67.6	62.5	260.4
Jennings	41	85	52.4	57.9	54.5	48.0	212.8	Christian Union	31	94	65.3	70.0	60.3	60.3	256.0

Ranking based on Mean total scores. LA – Language Arts, M – Mathematics, S – Science, SS – Social Studies

4.2-2 CEE 2011

Table 4.2-2-1: CEE 2011 Comparison of Means across Subjects by Gender and School-type

Subjects	Government/893			Private/735		
	Males/495	Females/398	Tot Gov	Males/356	Females/379	Tot Pri
LA	50.2	58.8	54.1	64.9	69.8	67.4
Maths	48.5	54.2	51.0	64.1	68.1	66.2
Science	44.4	50.6	47.2	59.2	61.3	60.2
SS	37.1	43.2	39.8	50.4	54.7	52.6
All	180.2	206.7	192.0	238.4	253.8	246.4

Table 4.2-2-2: CEE 2011 Comparison of Mean Total by Zone, Gender and School-type

Zones	Government Schools			Private Schools			All Schools		
	M	F	T	M	F	T	M	F	T
1	180.0	207.2	192.2	207.5	233.7	221.5	186.6	215.2	200.1
2	179.1	221.8	199.7	257.6	272.0	265.5	230.3	257.6	244.7
3	176.9	205.7	188.9	231.8	244.8	238.1	204.7	228.1	215.3
4	183.5	200.8	191.2	246.3	256.1	251.2	203.8	221.3	211.9
Totals	180.2	206.7	192.0	238.4	253.8	246.4	204.6	229.7	216.6

Figure 4.2-2-1: CEE 2011 Comparison of Total Scores by Gender, Zone and School-type

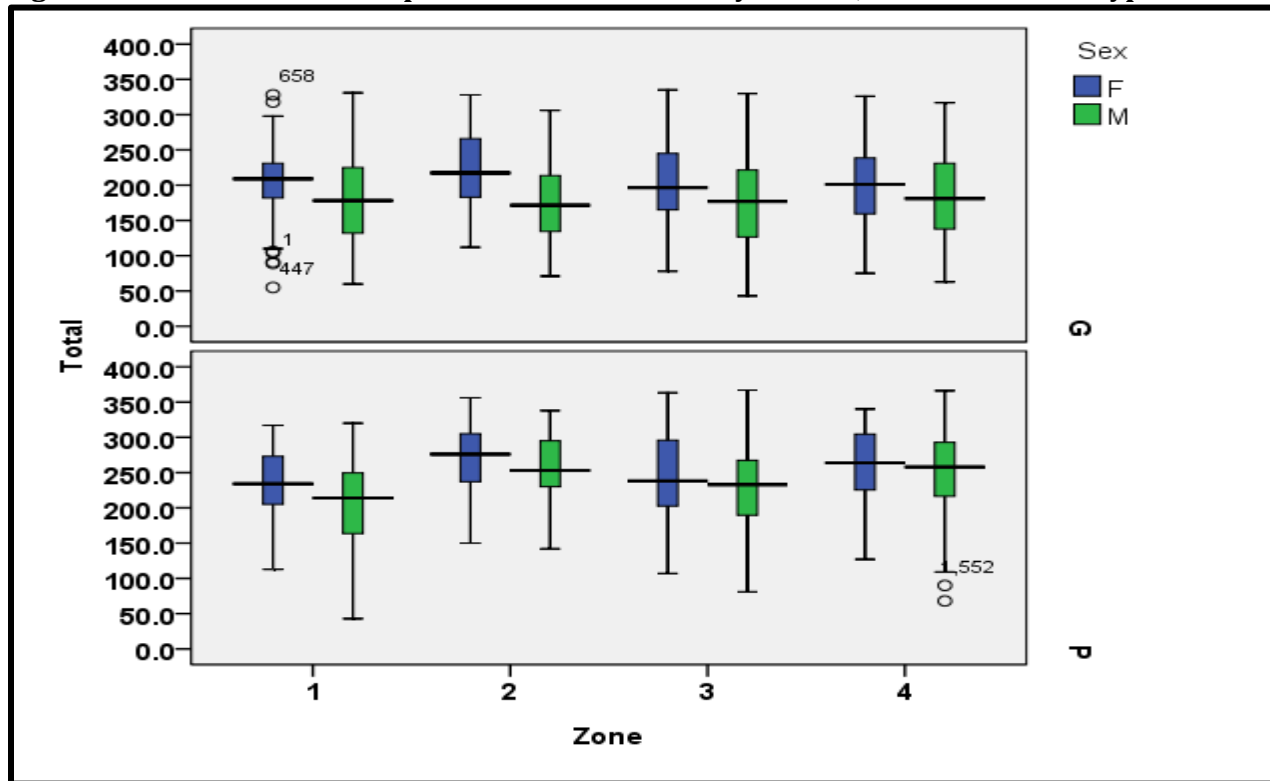


Table 4.2-2-3: Top Schools in CEE 2011

Government Schools								Private Schools							
School	No. stu-dents	Pass Rate (%)	Mean Scores					Name	No. stu-dents	Pass Rate (%)	Mean Scores				
			LA	M	S	SS	Total				LA	M	S	SS	Total
New Winthorpes	13	100	68.4	66.5	61.6	52.1	248.5	Baptist Academy	25	100	88.2	89.7	84.2	74.8	337.0
Freetown	12	92	64.8	73.2	60.2	45.4	243.5	St. Nicholas	20	100	79.0	85.4	79.3	65.3	308.9
Cedar Grove	23	96	64.7	71.3	56.9	49.5	242.3	Minoah Magnet	10	100	78.5	82.3	76.8	70.0	307.6
Sea View Farm	18	89	64.2	61.2	59.2	42.3	226.9	Sunnyside	54	100	74.9	81.3	70.1	63.5	289.8
Freemansville	14	86	57.9	64.7	59.7	44.6	226.9	Grace Christian	24	100	76.2	74.0	68.8	63.4	282.5
Old Road	12	100	60.3	54.3	58.5	50.8	223.9	Sunnydale	19	100	73.4	75.9	65.7	59.9	274.9
Cobbs Cross	14	100	61.7	57.6	54.6	47.1	221.0	Seaview Academy	15	100	73.1	76.9	60.9	63.1	274.0
Five Islands	46	94	58.0	63.2	49.5	49.6	220.2	Gospel Light	13	100	73.4	69.0	66.5	62.4	271.3
Newfield	10	70	57.0	62.2	52.6	45.4	217.6	St. Andrews	20	96	73.8	71.8	68.5	56.0	270.0
TN Kirnon	35	94	58.6	51.1	58.6	46.9	215.2	Kids Unlimited	17	100	70.9	74.4	63.3	58.1	266.6
JT Ambrose	35	80	59.1	54.3	48.9	49.1	211.3	St. John's Catholic	78	100	72.6	70.2	61.8	54.1	265.2
Pares	22	77	53.5	56.4	51.0	42.8	203.8	Island Academy	17	94	71.2	68.6	67.6	54.9	262.5

Ranking based on Mean total scores

Table 4.2-2-4: Comparison of Means over Several Years

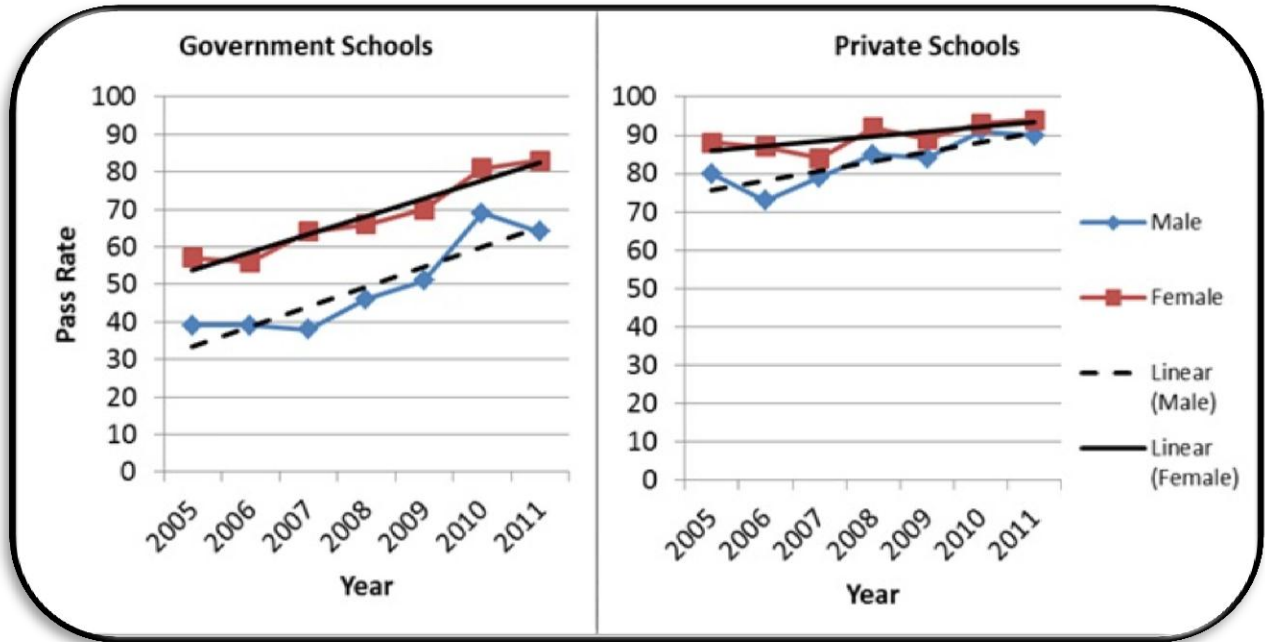
	1982*	2005	2008			2009			2010			2011		
	T/ 934	T/ 1591	M	F	T/ 1755	M	F	T/ 1593	M	F	T/ 1681	M	F	T/ 1628
LA	44.7	50.7	58.6	68.3	63.5	58.2	66.3	62.1	55.1	61.4	58.2	56.3	61.4	60.1
M	30.7	50.1	56.2	63.7	60.0	58.2	64.6	61.3	58.8	63.6	61.1	55.0	61.0	57.8
S		45.5	46.8	53.9	50.3	48.6	55.1	51.8	54.1	57.9	56.0	50.6	55.8	53.1
SS	50.5	45.1	49.0	55.9	52.4	46.7	52.0	49.3	49.0	52.8	50.8	42.7	48.8	45.6
Tot	NA	191.4	210.5	241.9	226.2	211.7	238.0	224.5	217.0	235.7	226.1	204.6	229.7	216.6

* In 1982, the CEE consisted of three subject areas, English (Language Arts), Mathematics and General Knowledge, shown here as Social Studies.

Table 4.2-2-5: CEE Pass Rates 2005 – 2011

Years	School-type	Boys		Girls		Totals	
		Sat	Passed	Sat	Passed	Sat	Passed
2005	Gov	539	215 (39%)	471	270 (57%)	1010	485 (48%)
	Priv	258	206 (80%)	322	282 (88%)	580	488 (84%)
	Totals	797	421 (53%)	794	553 (70%)	1591	974 (61%)
2006	Gov	480	189 (39%)	476	267 (56%)	956	456 (48%)
	Priv	325	237 (73%)	307	267 (87%)	632	504 (80%)
	Totals	806	426 (53%)	784	534 (68%)	1590	960 (60%)
2007	Gov	508	195 (38%)	502	322 (64%)	1010	517 (51%)
	Priv	345	271 (79%)	383	321 (84%)	728	592 (81%)
	Totals	854	466 (55%)	885	643 (73%)	1739	1109 (64%)
2008	Gov	529	244 (46%)	485	318 (66%)	1014	562 (55%)
	Priv	348	295 (85%)	393	362 (92%)	741	657 (89%)
	Totals	877	539 (62%)	878	680 (77%)	1755	1219 (70%)
2009	Gov	437	221 (51%)	415	291 (70%)	852	512 (60%)
	Priv	379	317 (84%)	362	322 (89%)	741	639 (86%)
	Totals	816	538 (66%)	777	613 (79%)	1593	1151 (72%)
2010	Gov	482	330 (69%)	446	362 (81%)	928	692 (75%)
	Priv	380	342 (91%)	373	348 (93%)	753	690 (92%)
	Totals	862	672 (78%)	819	710 (87%)	1681	1382 (82%)
2011	Gov	495	317 (64%)	398	332 (83%)	893	649 (73%)
	Priv	356	319 (90%)	379	356 (94%)	735	675 (92%)
	Totals	851	636 (75%)	777	688 (89%)	1628	1324 (81%)

Figure 4.2-2-2: Comparison of Trends in CEE Pass Rates by Gender within School-type



4.3 CXC's Caribbean Certificate of Secondary Level Competency

Table 4.3-1: Results of the CXC 2011 Examinations

School	Subject								
	English A			Mathematics			Overall		
	No. sitting	% Mas	% Mas + Com	No. sitting	% Mas	% Mas + Com	No. subjects sat	% Mas	% Mas + Com
ASSS	M: 87	48%	100%	M: 87	3%	86%	M: 266	19%	93%
	F: 79	67%	100%	F: 81	11%	88%	F: 290	30%	93%
	B: 166	53%	100%	B: 168	7%	87%	B: 556	25%	93%
AGHS	F: 121	100%	100%	F: 121	58%	100%	F: 605	72%	100%
AGS	M: 113	89%	99%	M: 106	32%	85%	M: 452	42%	92%
CHSS	M: 50	18%	88%	M: 58	5%	81%	M: 271	16%	82%
	F: 72	40%	100%	F: 83	6%	92%	F: 378	24%	91%
	B: 122	31%	95%	B: 141	6%	87%	B: 649	20%	87%
JSS	M: 47	19%	87%	M: 56	4%	64%	M: 217	9%	82%
	F: 68	43%	97%	F: 78	0%	83%	F: 303	15%	92%
	B: 115	33%	93%	B: 134	1%	75%	B: 520	13%	88%
OCS	M: 88	6%	76%	M: 89	2%	34%	M: 177	4%	55%
	F: 99	18%	91%	F: 100	2%	57%	F: 199	10%	74%
	B: 187	12%	84%	B: 189	2%	46%	B: 376	7%	65%
PSS	M: 73	12%	85%	M: 75	1%	79%	M: 230	5%	80%
	F: 59	32%	98%	F: 60	2%	85%	F: 189	13%	87%
	B: 132	21%	91%	B: 135	1%	81%	B: 419	9%	83%
PMS	M: 69	6%	86%	M: 70	1%	76%	M: 320	2%	67%
	F: 114	32%	96%	F: 114	11%	75%	F: 565	13%	80%
	B: 183	22%	92%	B: 184	7%	75%	B: 885	9%	75%
All A&B	M: 527	34%	90%	M: 541	9%	72%	M: 1933	17%	81%
	F: 612	50%	97%	F: 637	16%	83%	F: 2529	31%	89%
	B: 1139	42%	94%	B: 1178	12%	78%	B: 4462	25%	86%

Mas – Master, Com – Competent

4.4 CXC's CSEC Examinations 2010 and 2011

Table 4.4-1: Overview – CSEC Results 2010 and 2011

School	2010				2011			
	No. Subjects sat	% Pass	% Eng A	% Maths	No. Subjects sat	% Pass	% Eng A	% Maths
All Saints	1021	70.42	75.00	13.29	762	71.00	79.05	8.41
Antigua Girls High	886	92.21	100.00	82.73	736	94.47	98.90	79.12
Antigua Grammar	754	83.82	98.06	55.34	686	87.46	98.85	64.37
Clare Hall	673	79.05	86.81	46.15	595	70.25	88.31	17.11
Jennings	505	69.11	66.22	20.00	759	56.52	61.06	4.31
Ottos Comprehensive	663	72.55	79.76	20.45	667	65.07	72.41	7.87
Pares Secondary	402	66.17	74.14	20.69	509	65.62	64.94	11.54
Princess Margaret	1179	73.45	78.67	28.48	1218	73.89	81.01	22.78
Sir Mc Chesney George	78	79.49	66.67	0.00	89	84.27	87.50	0.00
Baptist Academy	106	99.06	100.00	100.00	133	100.00	100.00	100.00
Christ the King	434	92.40	98.08	72.34	443	92.10	98.11	66.04
Christian Faith	263	55.89	50.00	17.07	121	72.73	68.18	7.69
Island Academy	37	86.49	100.00	66.67	102	89.22	100.00	94.12
Seventh Day Adventist	216	68.98	96.30	35.71	281	77.94	97.37	47.06
St. Anthony's	141	79.43	88.24	66.67	193	74.09	90.91	40.91
St. Joseph's Academy	379	94.72	89.74	79.49	427	93.91	95.92	58.33
All Schools	7737	77.92	83.25	40.00	7721	76.54	83.10	32.25
All A&B	9264	74.15	77.05	36.58	9416	72.02	79.75	28.79

4.4-1 CSEC 2010

Table 4.4-1-1: CSEC Results in All General and Technical Subjects 2010

School-type		No. Subjects Sat	I	II	III	IV	V	VI	I-III
Single-sex ¹	M	1133	246	443	302	105	36	1	991
	F	1320	443	459	316	78	24	0	1218
	Tot	2453	689	902	618	183	60	1	2209
	%M		21.71	39.10	26.65	9.27	3.18	0.09	87.47
	%F		33.56	34.77	23.94	5.91	1.82	0.00	92.27
	%Tot		28.09	36.77	25.19	7.46	2.45	0.04	90.05
Mixed	M	1962	159	597	625	373	204	4	1381
	F	3322	314	962	1163	546	330	7	2439
	Tot	5284	473	1559	1788	919	534	11	3820
	%M		8.10	30.43	31.86	19.01	10.40	0.20	70.39
	%F		9.45	28.96	35.01	16.44	9.93	0.21	73.42
	%Tot		8.95	29.50	33.84	17.39	10.11	0.21	72.29
Government	M	2339	245	770	740	381	199	4	1755
	F	3822	550	1162	1257	533	313	7	2969
	Tot	6161	795	1932	1997	914	512	11	4724
	%M		10.47	32.92	31.64	16.29	8.51	0.17	75.03
	%F		14.39	30.40	32.89	13.95	8.19	0.18	77.68
	%Tot		12.90	31.36	32.41	14.84	8.31	0.18	76.68
Private	M	756	160	270	187	97	41	1	617
	F	820	207	259	222	91	41	0	688
	Tot	1576	367	529	409	188	82	1	1305
	%M		21.16	35.71	24.74	12.83	5.42	0.13	81.61
	%F		25.24	31.59	27.07	11.10	5.00	0.00	83.90
	%Tot		23.29	33.57	25.95	11.93	5.20	0.06	82.80
All Schools	M	3095	405	1040	927	478	240	5	2372
	F	4642	757	1421	1479	624	354	7	3657
	Tot	7737	1162	2461	2406	1102	594	12	6029
	%M		13.09	33.60	29.95	15.44	7.75	0.16	76.64
	%F		16.31	30.61	31.86	13.44	7.63	0.15	78.78
	%Tot		15.02	31.81	31.10	14.24	7.68	0.16	77.92
All A&B	M	3489	436	1106	1044	583	310	10	2586
	F	5775	844	1635	1804	922	553	17	4283
	Tot	9264	1280	2741	2848	1505	863	27	6869
	%M		12.50	31.70	29.92	16.71	8.89	0.29	74.12
	%F		14.61	28.31	31.24	15.97	9.58	0.29	74.16
	%Tot		13.82	29.59	30.74	16.25	9.32	0.29	74.15
Caribbean	%Tot	528 614	13.33	25.40	30.35	18.35	11.66	0.91	69.08

¹ It is more likely the case that the single-sex schools have better examination results *not* because they are single-sex, but because of the type of student most likely to gain access to these schools (for government schools, based on results of the CEE, for private schools, based on an entry exam and parents' ability to pay), a result also found and noted by Sukhmandan & Lee (1998) for single-sex schools in the UK.

Table 4.4-1-2: CSEC Results in English A 2010

School-type		No. Students Sitting	I	II	III	IV	V	VI	I-III
Single-sex	M	142	57	57	22	5	1	0	136
	F	162	106	40	15	1	0	0	161
	Tot	304	163	97	37	6	1	0	297
	%M		40.14	40.14	15.49	3.52	0.70	0.00	95.77
	%F		65.43	24.69	9.26	0.62	0.00	0.00	99.38
	%Tot		53.62	31.91	12.17	1.97	0.33	0.00	97.70
Mixed	M	267	30	75	82	66	14	0	187
	F	444	104	129	128	75	8	0	361
	Tot	711	134	204	210	141	22	0	548
	%M		11.24	28.09	30.71	24.72	5.24	0.00	70.04
	%F		23.42	29.05	28.83	16.89	1.80	0.00	81.31
	%Tot		18.85	28.69	29.54	19.83	3.09	0.00	77.07
Government	M	321	59	106	87	59	10	0	252
	F	498	162	135	129	68	4	0	426
	Tot	819	221	241	216	127	14	0	678
	%M		18.38	33.02	27.10	18.38	3.12	0.00	78.50
	%F		32.53	27.11	25.90	13.65	0.80	0.00	85.54
	%Tot		26.98	29.43	26.37	15.51	1.71	0.00	82.78
Private	M	88	28	26	17	12	5	0	71
	F	108	48	34	14	8	4	0	96
	Tot	196	76	60	31	20	9	0	167
	%M		31.82	29.55	19.32	13.64	5.68	0.00	80.68
	%F		44.44	31.48	12.96	7.41	3.70	0.00	88.89
	%Tot		38.78	30.61	15.82	10.20	4.59	0.00	85.20
All Schools	M	409	87	132	104	71	15	0	323
	F	606	210	169	143	76	8	0	522
	Tot	1015	297	301	247	147	23	0	845
	%M		21.27	32.27	25.43	17.36	3.67	0.00	78.97
	%F		34.65	27.89	23.60	12.54	1.32	0.00	86.14
	%Tot		29.26	29.66	24.33	14.48	2.27	0.00	83.25
All A&B	M	490	93	144	124	101	27	1	361
	F	813	224	206	213	145	25	0	643
	Tot	1303	317	350	337	246	52	1	1004
	%M		18.98	29.39	25.31	20.61	5.51	0.20	73.67
	%F		27.55	25.34	26.20	17.84	3.08	0.00	79.09
	%Tot		24.33	26.86	25.86	18.88	3.99	0.08	77.05
Caribbean	%Tot	92 349	18.12	21.61	26.75	22.96	9.55	1.01	66.48

Table 4.4-1-3: CSEC Results in Mathematics 2010

School-type		No. Students Sitting	I	II	III	IV	V	VI	I-III
Single-sex	M	142	16	30	42	33	20	1	88
	F	157	30	45	50	21	11	0	125
	Tot	299	46	75	92	54	31	1	213
	%M		11.27	21.13	29.58	23.24	14.08	0.70	61.97
	%F		19.11	28.66	31.85	13.38	7.01	0.00	79.62
	%Tot		15.38	25.08	30.77	18.06	10.37	0.33	71.24
Mixed	M	278	10	22	48	61	134	3	80
	F	443	10	26	79	102	219	7	115
	Tot	721	20	48	127	163	353	10	195
	%M		3.60	7.91	17.27	21.94	48.20	1.08	28.78
	%F		2.26	5.87	17.83	23.02	49.44	1.58	25.96
	%Tot		2.77	6.66	17.61	22.61	48.96	1.39	27.05
Government	M	327	7	38	70	76	132	4	115
	F	501	27	49	106	106	206	7	182
	Tot	828	34	87	176	182	338	11	297
	%M		2.14	11.62	21.41	23.24	40.37	1.22	35.17
	%F		5.39	9.78	21.16	21.16	41.12	1.40	36.33
	%Tot		4.11	10.51	21.26	21.98	40.82	1.33	35.87
Private	M	93	19	14	20	18	22	0	53
	F	99	13	22	23	17	24	0	58
	Tot	192	32	36	43	35	46	0	111
	%M		20.43	15.05	21.51	19.35	23.66	0.00	56.99
	%F		13.13	22.22	23.23	17.17	24.24	0.00	58.59
	%Tot		16.67	18.75	22.40	18.23	23.96	0.00	57.81
All Schools	M	420	26	52	90	94	154	4	168
	F	600	40	71	129	123	230	7	240
	Tot	1020	66	123	219	217	384	11	408
	%M		6.19	12.38	21.43	22.38	36.67	0.95	40.00
	%F		6.67	11.83	21.50	20.50	38.33	1.17	40.00
	%Tot		6.47	12.06	21.47	21.27	37.65	1.08	40.00
All A&B	M	540	28	62	121	129	193	7	211
	F	958	43	91	203	241	366	14	337
	Tot	1498	71	153	324	370	559	21	548
	%M		5.19	11.48	22.41	23.89	35.74	1.30	39.07
	%F		4.49	9.50	21.19	25.16	38.20	1.46	35.18
	%Tot		4.74	10.21	21.63	24.70	37.32	1.40	36.58
Caribbean	%Tot	88 373	7.95	11.80	21.29	20.80	34.82	3.34	41.05

The mean age of students in school sitting the 2010 CSEC examinations was 17.2 years, with males being slightly older than females (17.3 to 17.0 years respectively). Ages ranged from 14.43 to 22.25 years.

Table 4.4-1-4: Quality of Passes by School in CSEC 2010

Type	School	Mean Age	No. sitting ≥1 subject			No. sitting ≥5 subjects	No. passing ≥5 subjects			No. passing ≥5 subjects + English A			No. passing ≥5 subjects + (English A and Mathematics)		
			T	M	F		T	Total	M	F	T	M	F	T	M
Government	ASSS	17.6	57	85	142	136	33 58%	61 72%	94 66%	29 51%	52 61%	81 57%	4 7%	11 13%	15 11%
	AGHS	16.4	–	111	111	110	–	107 96%	107 96%	–	106 95%	106 95%	–	90 81%	90 81%
	AGS	16.8	106	–	106	101	84 79%	–	84 79%	83 78%	–	83 78%	56 53%	–	56 53%
	CHSS	17.6	37	63	100	89	25 68%	46 73%	71 71%	24 65%	45 71%	69 69%	19 51%	23 37%	42 42%
	JSS	16.9	29	48	77	74	19 66%	19 40%	38 49%	15 52%	18 38%	33 43%	5 17%	6 13%	11 14%
	OCS	17.5	27	61	88	86	14 52%	48 79%	62 70%	12 44%	43 70%	55 63%	2 7%	15 25%	17 19%
	PSS	17.4	16	42	58	58	9 56%	22 52%	31 53%	8 50%	22 52%	30 52%	1 6%	7 17%	8 14%
	PMSS	17.4	60	104	164	149	40 67%	66 64%	106 64%	34 57%	63 61%	97 59%	15 25%	19 18%	34 21%
	SMGSS	18.2	4	5	9	8	3 75%	5 100%	8 89%	2 50%	4 80%	6 67%	0 0%	0 0%	0 0%
Private	BA	16.5	7	6	13	13	7 100%	6 100%		7 100%	6 100%		7 100%	6 100%	13 100%
	CKHS	16.7	–	53	53	52	–	51 96%	51 96%	–	50 94%	50 94%	–	33 62%	33 62%
	CFA	17.4	44	22	66	25	5 11%	3 14%	8 12%	3 7%	3 14%	6 9%	1 2%	2 9%	3 5%
	IA	16.7	3	3	6	6	2	2	4	2	2	4	2	2	4

							67%	67%	67%	67%	67%	67%	67%	67%	67%
	SDA	17.0	10	18	28	28	5 50%	10 56%	15 54%	5 50%	10 56%	15 54%	3 30%	6 33%	9 32%
	SJA	16.6	51	-	51	43	41 80%	-	41 80%	35 69%	-	35 69%	27 53%	-	27 53%
	StA	16.8	8	11	19	19	4 50%	8 73%	12 63%	4 50%	8 73%	12 63%	4 50%	7 64%	11 58%
	All Schools	17.2	459	632	1091	997	291 63%	454 72%	745 68%	263 57%	432 68%	695 64%	146 32%	227 36%	373 34%

Percentages based on no. of students sitting at least one subject.

Mathematics remains a 'limiting factor' in the quality of student success in the CXC-CSEC examinations.

Table 4.4-1-5: Further Statistical Analysis Associated with Quality of Passes CSEC 2010

No. subjects passed		≥ 5	Phi ²	Odds Ratio (from Exp (B)) ³	Proportion of variation explained
Factor					
Gender	M/459	291 (63%)	0.090	1.5	1.1%
	F/632	454 (72%)			
Secondary school-type	Gov/855	601 (70%)	0.082	1.5	0.9%
	Pri/236	144 (61%)			
Secondary school-type	Single-sex/321	283 (88%)	0.276	5.0	11.5%
	Mixed/770	462 (60%)			
Student Age	≤ 17yrs/552	437 (79%)	0.272	2.5	9.8%
	17-18 yrs/443	269 (61%)			
	19+ yrs/92	35 (38%)			
CSEC English A	Pass/844	695 (82%)	0.483	14.3	27.4%
	Fail/170	42 (25%)			
CSEC Maths	Pass/408	388 (95%)	0.421	14.9	27.2%
	Fail/611	345 (57%)			

Table 4.4-1-6: Student Pass Rate in Other Subject Areas CSEC 2010

Area	Subject	Males	Females	Total	Cf Caribbean Pass Rate
Sciences	Agricultural Science SA	72/99%	92/98%	164/98%	91%
	Agricultural Science DA	29/86%	51/90%	80/89%	89%
	Biology	88/80%	153/66%	241/71%	75%
	Chemistry	56/71%	71/69%	127/70%	70%
	Physics	81/72%	54/61%	135/67%	75%
	Human and Social Biology	33/52%	98/79%	131/72%	68%
	Integrated Science	164/91%	195/91%	359/91%	86%
Humanities	Caribbean History	72/69%	107/71%	179/70%	65%
	Geography	109/51%	123/54%	232/53%	65%
	Social Studies	188/93%	304/94%	492/94%	80%
	English B	85/71%	208/89%	293/84%	77%
	Physical Education	77/100%	90/99%	167/99%	98%
Foreign Languages	French	30/37%	62/69%	92/59%	67%
	Spanish	91/70%	171/61%	262/65%	64%
Business	Economics	25/60%	59/59%	84/60%	62%
	EDPM	73/89%	148/97%	221/94%	91%
	Information Technology	145/95%	178/92%	323/94%	84%

² The phi values give a measure of the strength of the association of the factors. Cohen (1988, p82-83) outlined a guideline for the interpretation of phi results in social research: 0.10 indicates a small effect, 0.30 indicates a medium effect, and 0.50 indicates a large effect. Cohen also made the point that in the field of educational psychology values of phi of 0.5 are 'about as high as they come' (p81).

³ This result means that, for example, on the factor of secondary school typed as single-sex or mixed, a student is 6.6 times as likely to have passed 5 subjects if s/he went to a single-sex school as if s/he went to a mixed school.

	Office Administration	126/87%	243/92%	369/90%	71%
	Principles of Accounts	130/76%	193/68%	323/71%	65%
	Principles of Business	182/93%	238/97%	420/96%	80%
Technical/ Vocational	Building Technology (Construction)	126/91%	5/100%	131/91%	80%
	Electrical and Electronic Technology	8/88%	–	8/88%	67%
	Mechanical Engineering	49/88%	2/100%	51/88%	65%
	Technical Drawing	144/90%	18/89%	162/90%	77%
	Clothing and Textiles	–	84/98%	84/98%	83%
	Food and Nutrition	11/100%	170/99%	181/99%	94%
	Home Economics	8/100%	129/98%	137/99%	86%
	Visual Arts	48/73%	162/73%	210/73%	64%
Performing Arts	Music	15/87%	90/90%	35/89%	72%
	Theatre Arts	1/100%	3/100%	4/100%	89%

Table compiled for students in school only.

The first number refers to the number of students taking the subject, the second to the pass rate. Cells shaded in grey highlight for Antigua and Barbuda where males have attained a higher pass rate than females; those shaded in brown where Antigua and Barbuda's pass rate is higher than that of the region.

4.4-2 CSEC 2011

Table 4.4-2-1: Results in All General and Technical Subjects CSEC 2011

School-type		No. Subjects Sat	I	II	III	IV	V	VI	I-III
Single-sex	M	1113	261	430	310	85	26	1	1001
	F	1179	473	415	216	54	21	0	1104
	Tot	2292	734	845	526	139	47	1	2105
	%M		23.45	38.63	27.85	7.64	2.34	0.09	89.94
	%F		40.12	35.20	18.32	4.58	1.78	0.00	93.64
	%Tot		32.02	36.87	22.95	6.06	2.05	0.04	91.84
Mixed	M	2204	230	609	697	412	246	10	1536
	F	3225	356	885	1028	552	380	24	2269
	Tot	5429	586	1494	1725	964	626	34	3805
	%M		10.44	27.63	31.62	18.69	11.16	0.45	69.69
	%F		11.04	27.44	31.88	17.12	11.78	0.74	70.36
	%Tot		10.79	27.52	31.77	17.76	11.53	0.63	70.09
Government	M	2519	304	757	778	424	245	11	1839
	F	3502	560	1007	1021	529	362	23	2588
	Tot	6021	864	1764	1799	953	607	34	4427
	%M		12.07	30.05	30.89	16.83	9.73	0.44	73.01
	%F		15.99	28.75	29.15	15.11	10.34	0.66	73.90
	%Tot		14.35	29.30	29.88	15.83	10.08	0.56	73.53
Private	M	798	187	282	229	73	27	0	698
	F	902	269	293	223	77	39	1	785
	Tot	1700	456	575	452	150	66	1	1483
	%M		23.43	35.34	28.70	9.15	3.38	0.00	87.47
	%F		29.82	32.48	24.72	8.54	4.32	0.11	87.03
	%Tot		26.82	33.82	26.59	8.82	3.88	0.06	87.24
All Schools	M	3317	491	1039	1007	497	272	11	2537
	F	4404	829	1300	1244	606	401	24	3373
	Tot	7721	1320	2339	2251	1103	673	35	5910
	%M		14.80	31.32	30.36	14.98	8.20	0.33	76.48
	%F		18.82	29.52	28.25	13.76	9.11	0.54	76.59
	%Tot		17.10	30.29	29.15	14.29	8.72	0.45	76.54
All A&B	M	3870	532	1126	1135	638	411	28	2793
	F	5546	924	1498	1566	851	671	36	3988
	Tot	9416	1456	2624	2701	1489	1082	64	6781
	%M		13.75	29.10	29.33	16.49	10.62	0.72	72.17
	%F		16.66	27.01	28.24	15.34	12.10	0.65	71.91
	%Tot		15.46	27.87	28.69	15.81	11.49	0.68	72.02
Caribbean	%Tot	538 750	13.34	24.01	29.13	19.33	12.98	1.21	66.48

Table 4.4-2-2: Results in English A CSEC 2011

School-type		No. Students Sitting	I	II	III	IV	V	VI	I-III
Single-sex	M	136	77	41	15	3	0	0	133
	F	144	106	26	10	2	0	0	142
	Tot	280	183	67	25	5	0	0	275
	%M		56.62	30.15	11.03	2.21	0.00	0.00	97.79
	%F		73.61	18.06	6.94	1.39	0.00	0.00	98.61
	%Tot		65.36	23.93	8.93	1.79	0.00	0.00	98.21
Mixed	M	314	40	80	108	73	13	0	228
	F	424	101	120	122	69	11	1	343
	Tot	738	141	200	230	142	24	1	571
	%M		12.74	25.48	34.39	23.25	4.14	0.00	72.61
	%F		23.82	28.30	28.77	16.27	2.59	0.24	80.90
	%Tot		19.11	27.10	31.17	19.24	3.25	0.14	77.37
Government	M	345	77	91	97	68	12	0	265
	F	458	141	126	112	67	11	1	379
	Tot	803	218	217	209	135	23	1	644
	%M		22.32	26.38	28.12	19.71	3.48	0.00	76.81
	%F		30.79	27.51	24.45	14.63	2.40	0.22	82.75
	%Tot		27.15	27.02	26.03	16.81	2.86	0.12	80.20
Private	M	105	40	30	26	8	1	0	96
	F	110	66	20	20	4	0	0	106
	Tot	215	106	50	46	12	1	0	202
	%M		38.10	28.57	24.76	7.62	0.95	0.00	91.43
	%F		60.00	18.18	18.18	3.64	0.00	0.00	96.36
	%Tot		49.30	23.26	21.40	5.58	0.47	0.00	93.95
All Schools	M	450	117	121	123	76	13	0	361
	F	568	207	146	132	71	11	1	485
	Tot	1018	324	267	255	147	24	1	846
	%M		26.00	26.89	27.33	16.89	2.89	0.00	80.22
	%F		36.44	25.70	23.24	12.50	1.94	0.18	85.39
	%Tot		31.83	26.23	25.05	14.44	2.36	0.10	83.10
All A&B	M	545	129	139	146	105	25	1	414
	F	749	230	190	198	106	23	2	618
	Tot	1294	359	329	344	211	48	3	1032
	%M		23.67	25.50	26.79	19.27	4.59	0.18	75.96
	%F		30.71	25.37	26.44	14.15	3.07	0.27	82.51
	%Tot		27.74	25.43	26.58	16.31	3.71	0.23	79.75
Caribbean	%Tot	91 406	18.22	21.99	26.80	22.70	9.24	1.05	67.01

Table 4.4-2-3: Results in Mathematics CSEC 2011

School-type		No. Students Sitting	I	II	III	IV	V	VI	I-III
Single-sex	M	135	7	34	43	33	18	1	84
	F	144	27	33	47	20	17	0	107
	Tot	279	34	67	90	53	35	1	191
	%M		5.19	25.19	31.85	24.44	13.33	0.74	62.22
	%F		18.75	22.92	32.64	13.89	11.81	0.00	74.31
	%Tot		12.19	24.01	32.26	19.00	12.54	0.36	68.46
Mixed	M	304	9	16	39	71	161	8	64
	F	428	14	18	39	86	250	21	71
	Tot	732	23	34	78	157	411	29	135
	%M		2.96	5.26	12.83	23.36	52.96	2.63	21.05
	%F		3.27	4.21	9.11	20.09	58.41	4.91	16.59
	%Tot		3.14	4.64	10.66	21.45	56.15	3.96	18.44
Government	M	347	5	33	56	80	165	9	94
	F	463	18	34	61	90	240	20	113
	Tot	810	23	67	117	170	405	29	207
	%M		1.44	9.51	16.14	23.05	47.55	2.59	27.09
	%F		3.89	7.34	13.17	19.44	51.84	4.32	24.41
	%Tot		2.84	8.27	14.44	20.99	50.00	3.58	25.56
Private	M	92	11	17	26	24	14	0	54
	F	109	23	17	25	16	27	1	65
	Tot	201	34	34	51	40	41	1	119
	%M		11.96	18.48	28.26	26.09	15.22	0.00	58.70
	%F		21.10	15.60	22.94	14.68	24.77	0.92	59.63
	%Tot		16.92	16.92	25.37	19.90	20.40	0.50	59.20
All Schools	M	439	16	50	82	104	179	9	148
	F	572	41	51	86	106	267	21	178
	Tot	1011	57	101	168	210	446	30	326
	%M		3.64	11.39	18.68	23.69	40.77	2.05	33.71
	%F		7.17	8.92	15.03	18.53	46.68	3.67	31.12
	%Tot		5.64	9.99	16.62	20.77	44.11	2.97	32.25
All A&B	M	590	18	57	110	141	248	16	185
	F	928	44	60	148	196	449	31	252
	Tot	1518	62	117	258	337	697	47	437
	%M		3.05	9.66	18.64	23.90	42.03	2.71	31.36
	%F		4.74	6.47	15.95	21.12	48.38	3.34	27.16
	%Tot		4.08	7.71	17.00	22.20	45.92	3.10	28.79
Caribbean	%Tot	89 977	6.92	9.71	18.53	19.77	40.01	5.06	35.16

The mean age of the students in school sitting CSEC examinations was 17.3 years, with males being slightly older than females (17.4 to 17.2 years respectively). Ages ranged from 13.97 to 34.69 years.

Table 4.4-2-4: Quality of Passes by School in CSEC 2011

Type	School	Mean Age	No. sitting ≥1 subject			No. sitting ≥5 subjects	No. passing ≥5 subjects			No. passing ≥5 subjects + English A			No. passing ≥5 subjects + (English A and Mathematics)		
			T	M	F		T	Total	M	F	T	M	F	T	M
Government	ASSS	17.6	45	62	107	104	26 58%	46 74%	72 67%	22 49%	46 67%	68 64%	3 7%	6 10%	9 8%
	AGHS	16.7	3	92	95	91	0 0%	89 97%	89 94%	0* 0%	88 96%	88 93%	0* 0%	72 78%	72 76%
	AGS	16.8	89	-	89	87	76 85%	-	76 85%	76 85%	-	76 85%	55 62%	-	55 62%
	CHSS	17.8	42	43	85	77	26 62%	27 63%	53 62%	24 57%	27 63%	51 60%	7 17%	6 14%	13 15%
	JSS	17.5	45	72	117	108	18 40%	24 33%	42 36%	15 33%	22 31%	37 32%	3 7%	2 3%	5 4%
	OCS	17.8	37	59	96	89	19 51%	29 49%	48 50%	18 49%	27 46%	45 47%	4 11%	2 3%	6 6%
	PSS	17.7	41	38	79	72	17 42%	20 53%	37 47%	14 34%	19 50%	33 42%	4 10%	3 8%	7 9%
	PMSS	17.4	66	103	169	153	40 61%	72 70%	112 66%	36 55%	68 66%	104 62%	14 21%	18 17%	32 19%
	SMGSS	17.7	1	7	8	8	1 100%	7 100%	8 100%	0* 0%	7 100%	7 88% %	0 0%	0 0%	0 0%
Private	BA	16.5	4	10	14	14	4 100%	10 100%	14 100%	4 100%	10 100%	14 100%	4 100%	10 100%	14 100%
	CKHS	16.7	-	53	53	53	-	50 94%	50 94%	-	50 94%	50 94%	-	35 66%	35 66%
	CFA	17.3	31	19	50	5	3 10%	0 0%	3 6%	3 10%	0 0%	3 6%	1 3%	0 0%	1 2%
	IA	16.5	11	6	17	17	8	6	14	8	6	14	8	6	14

							73%	100%	82%	73%	100%	82%	73%	100%	82%
	SDA	16.9	12	27	39	39	9 75%	16 59%	25 64%	9 75%	16 59%	25 64%	7 58%	9 33%	16 41%
	SJA	16.6	59	-	59	49	48 81%	-	48 81%	47 80%	-	47 80%	28 47%	-	28 47%
	StA	16.8	12	13	25	23	6 50%	7 54%	13 52%	6 50%	7 54%	13 52%	3 25%	4 31%	7 28%
	All Schools	17.3	498	604	1102	989	301 60%	403 67%	704 64%	282 57%	393 65%	675 61%	141 28%	173 29%	314 28%

Percentages based on no. of students sitting at least one subject.

There is an anomaly in the candidate entries for the AGHS, with 3 male candidates writing CXC's registered with this school. The mean age of these three males was 23.6 years, with that of the 92 female candidates (believed otherwise to be students of the school) being 16.4 years.

These 3 males wrote one subject, Music. They were all successful.

Table 4.4-2-5: Further Statistical Analysis Associated with Quality of Passes CSEC 2011

Factor	No. subjects passed	≥ 5	Phi	Odds Ratio (from Exp (B))	Proportion of variation explained
	Gender	M/498	301 (60%)	0.065	1.3
	F/604	403 (67%)			
Secondary school-type	Gov/845	537 (64%)	0.013	1.1	0.0%
	Pri/257	167 (65%)			
Secondary school-type	Single-sex/296	263 (89%)	0.315	6.6	14.6%
	Mixed/806	441 (55%)			
Student Age	≤ 17yrs/545	436 (80%)	0.364	3.4	17.2%
	17-18 yrs/453	238 (53%)			
	19+ yrs/100	27 (27%)			
CSEC English A	Pass/846	675 (80%)	0.526	23.1	32.6%
	Fail/171	25 (15%)			
CSEC Maths	Pass/326	318 (98%)	0.427	32.2	29.4%
	Fail/684	378 (55%)			

Table 4.4-2-6: Student Pass Rate in Other Subject Areas CSEC 2011

Area	Subject	Males	Females	Total	Cf Caribbean Pass Rate
Sciences	Agricultural Science SA	98/85%	84/80%	182/82%	91%
	Agricultural Science DA	9/100%	24/100%	33/100%	93%
	Biology	106/72%	137/77%	243/75%	73%
	Chemistry	54/63%	73/70%	127/67%	64%
	Physics	83/74%	57/72%	140/73%	74%
	Human and Social Biology	28/46%	68/69%	96/63%	63%
	Integrated Science	174/90%	191/80%	365/85%	74%
Humanities	Caribbean History	61/82%	83/71%	144/76%	74%
	Geography	80/78%	81/73%	161/75%	65%
	Social Studies	221/81%	353/77%	574/79%	70%
	English B	81/63%	174/83%	255/77%	71%
	Physical Education	130/100%	93/97%	223/99%	98%
Foreign Languages	French	27/74%	84/79%	111/78%	75%
	Spanish	109/74%	145/73%	254/74%	67%
Business	Economics	32/63%	56/59%	88/60%	71%
	EDPM	108/83%	198/89%	306/87%	85%
	Information Technology	153/95%	185/93%	338/94%	79%
	Office Administration	116/97%	231/99%	347/98%	88%
	Principles of Accounts	101/84%	173/70%	274/75%	66%
	Principles of Business	193/96%	236/90%	429/93%	78%
Technical/ Vocational	Building Technology (Construction)	150/96%	18/94%	168/96%	83%
	Electrical and Electronic Technology	32/53%	1/100%	33/55%	44%
	Mechanical Engineering	49/84%	-	49/84%	56%

	Technical Drawing	151/82%	38/87%	189/83%	71%
	Clothing and Textiles	1/100%	62/97%	63/97%	81%
	Food and Nutrition	18/89%	153/99%	171/98%	92%
	Home Economics	4/100%	127/98%	131/99%	89%
	Visual Arts	44/59%	121/65%	165/63%	67%
Performing Arts	Music	11/73%	14/86%	25/80%	66%
	Theatre Arts	-	4/100%	4/100%	87%

Table compiled for students in school only.

The first number refers to the number of students taking the subject, the second to the pass rate. Cells shaded in grey highlight for Antigua and Barbuda where males have attained a higher pass rate than females; those shaded in brown where Antigua and Barbuda's pass rate is higher than that of the region.

Figure 4.4-2-1: Antigua and Barbuda's Pass Rate in Mathematics with Region

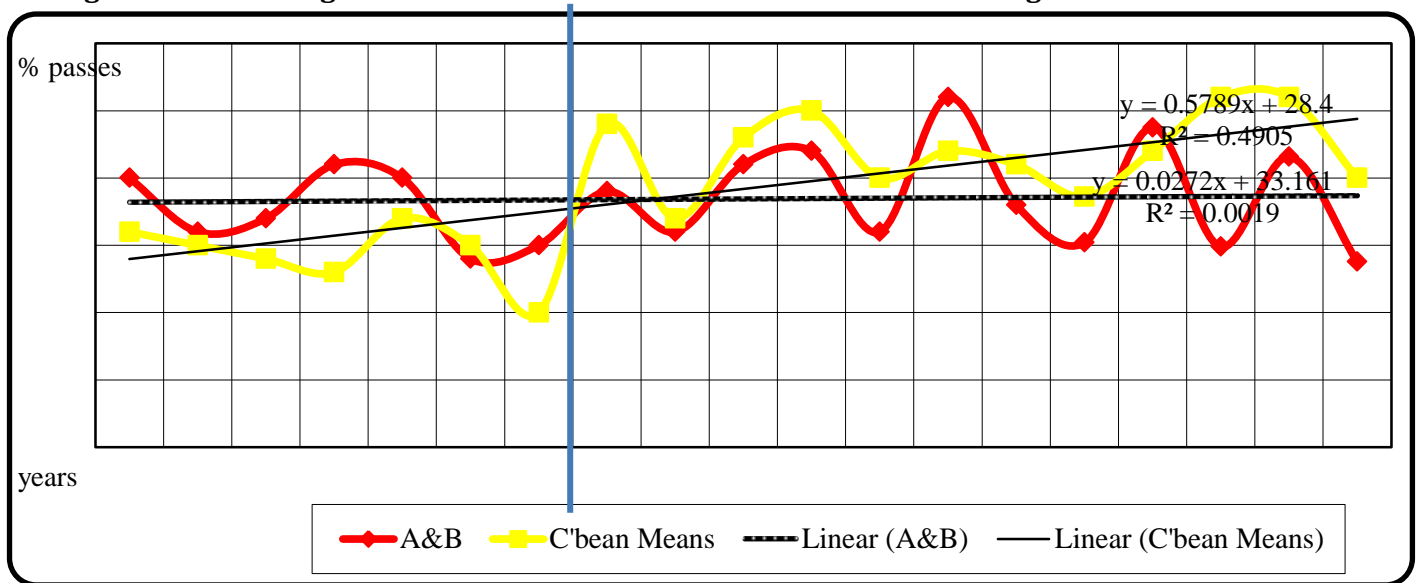


Table 4.4-2-7: Comparison of In-school with Out-of-school Candidates for the CSEC 2011 Examinations

	In-school			Out-of-school		
	M	F	T	M	F	T
Mean Age	17.4	17.2	17.3 (13.97 – 34.69 Min – Max)	21.2	26.4	24.9 (13.65 – 64.18 Min – Max)
No. Candidates	498	604	1102	303	749	1052
No. Subjects Sat	3317	4404	7721	553	1142	1695
No. sitting \geq 5 subjects	431	558	989	22	27	49
Modal No.	8			1		

Subjects Sat	
--------------	--

In the 2011 CXC-CSEC examinations, approximately 51% of registered candidates in Antigua and Barbuda were in-school students. They accounted for approximately 82% of the subjects sat. The modal subject sat by out-of-school candidates was Mathematics, with 507 candidates sitting this subject; 21.9% of them were successful (cf. 32.3% in-school, 28.8% country). This was followed by English A, with 276 candidates sitting this subject; 67.4% of there were successful (cf. 83.1% in-school, 79.8% country).