

**CARIBBEAN SECONDARY EDUCATION  
CERTIFICATE (CSEC) EXAMINATION  
2013**

**ANALYSIS OF THE PUBLIC SCHOOLS'  
PERFORMANCE**



## Performance of Jamaican Candidates

The analysis presented is based on data obtained from the Caribbean Examination Council (CXC), for the June 2013 sitting of the CSEC Examination. The information contained in this report takes into consideration the assignment of Knox College, Alston and Spaldings High Schools to Region 6 from Region 5. The results by regions and parishes will therefore be slightly different from those of the previous year, 2012.

The results saw **282,019** subject entries at the General and Technical Proficiency level of which **266,142** were sat (See Table 1). There were 10,365 less entries in 2013 than in 2012. Additionally, the number of entries sat was 6,873 less than those sat in the previous year. Of the total sitting, **171,114** or 64.3% obtained grades 1-3. The Technical and Vocational as well as the Business areas continued to show the highest percentage passes, (over 80%) compared to the Arts and the Sciences. Mathematics and English Language, with the largest numbers of entries and sittings, recorded percentage passes of 34.1 and 56.6 respectively.

**Table 1: Entered and Sat by Categories**

SUBJECT	Number Entered	Number Sat	Sat as % of Number Entered
Arts	99473	95620	96.1
Sciences	97165	90968	93.6
Technical/Vocational	53093	49503	93.2
Business	32288	30051	93.1
<b>Total</b>	<b>282019</b>	<b>266142</b>	<b>94.4</b>

**Table 2** provides data on the performance of Jamaican candidates (private and public) by sex.

**Table 2: Performance of Jamaican Candidates by Sex**

	2013		
	Female	Male	Total
Total Candidates Entering	48173	31004	79177
Total Candidates Sitting	44573	28223	72796
Total Passing 1 or more subjects	33738	20813	54551
% Passing 1 or more subjects	75.7	73.7	74.9

**Table 3** below provides further details on the performance of Jamaican candidates in the various subject areas.

**Table 3: Performance of Jamaican Candidates in the 2013 CSEC Examinations  
(General and Technical Proficiency)**

SUBJECT	2013				2012
	No. Entering	No. Sitting	No. Attaining Gr 1-3	% Attaining Gr 1-3 (2013)	% Attaining Gr 1-3 (2012)
<b>Arts</b>	99473	95620	61270	<b>64.1</b>	<b>59.1</b>
CARIBBEAN HISTORY	6107	5835	4288	73.5	72.4
ENGLISH A	46317	44551	25226	56.6	46.1
ENGLISH B	8125	8000	6312	78.9	72.9
FRENCH	882	859	719	83.7	81.8
GEOGRAPHY	4870	4679	3282	70.1	65.7
MUSIC	199	175	114	65.1	56.0
RELIGIOUS EDUCATION	3140	3042	2235	73.5	80.7
SOCIAL STUDIES	25623	24403	16037	65.7	68.5
SPANISH	4210	4076	3057	75.0	71.4
<b>Sciences</b>	97165	90968	45795	<b>50.3</b>	<b>47.6</b>
ADDITIONAL MATHEMATICS	614	599	401	66.9	43.1
BIOLOGY	7052	6758	4930	73.0	71.8
CHEMISTRY	7590	7048	4244	60.2	56.1
HUMAN AND SOCIAL BIOLOGY	18456	17184	11136	64.8	56.6
INTEGRATED SCIENCE	8306	7795	5711	73.3	72.7
MATHEMATICS	48633	45530	15508	34.1	31.7
PHYSICS	6514	6054	3865	63.8	73.4
<b>Technical/Vocational</b>	53093	49503	39999	<b>80.8</b>	<b>80.2</b>
AGRICULTURAL SCIENCE DOUBLE AWARD *	471	457	436	95.4	92.9
AGRICULTURAL SCIENCE SINGLE AWARD	3197	3037	2812	92.6	90.6
BUILDING TECHNOLOGY (CONST)	929	869	727	83.7	73.0
BUILDING TECHNOLOGY (WOODS)	1170	1025	804	78.4	57.2
CLOTHING AND TEXTILES	1760	1685	1221	72.5	85.6
ELECTRICAL & ELECTRONIC TECHNOLOGY	2226	2122	1275	60.1	62.3
ELECTRONIC DOCUMENT PREPAR AND MANAGEMENT	5550	5215	4308	82.6	87.7
FOOD AND NUTRITION	5619	5475	4986	91.1	89.0
HOME ECONOMICS MANAGEMENT	4148	4005	3349	83.6	83.9
INFORMATION TECHNOLOGY	15276	14083	10621	75.4	79.4
MECHANICAL ENGINEERING TECHNOLOGY	1510	1389	1024	73.7	64.3
PHYSICAL EDUCATION AND SPORT	3883	3590	3412	95.0	96.6
TECHNICAL DRAWING	4297	3855	2897	75.1	61.0
THEATRE ARTS	705	673	576	85.6	85.8
VISUAL ARTS	2352	2023	1551	76.7	66.5
<b>Business</b>	32288	30051	24050	<b>80.0</b>	<b>73.6</b>
ECONOMICS	1077	1032	898	87.0	65.5
OFFICE ADMINISTRATION	7293	6839	5498	80.4	79.4
PRINCIPLES OF ACCOUNTS	10363	9329	7008	75.1	55.3
PRINCIPLES OF BUSINESS	13555	12851	10646	82.8	84.8
<b>Total</b>	<b>282019</b>	<b>266142</b>	<b>171114</b>	<b>64.3</b>	<b>60.7</b>

## Summary Performance of Public Schools

### Summary of the 2013 CSEC Results for Public Schools

A total of 36, 047 candidates were registered to sit the exams: (20,389 females and 15, 658 males).

A total of 35, 278 candidates actually sat: (20, 041 females and 15, 237 males).

A total of 30,307 attained grades 1-3 in at least one subject: (17, 671 females and 12, 636 males).

#### Performance of those who sat:

0 subjects - 4971 candidates  
 1 - 4 subjects - 16,195 candidates  
 5 -15 subjects - 14,112 candidates

**Table 4: Performance of candidates in English Language and Mathematics**

SEX	English A Only	Mathematics Only	Mathematics & English	English A and or Mathematics	% of Cohort
FEMALE	4115	243	4734	9092	42.5
MALE	2025	516	2918	5459	26.2
<b>Total</b>	<b>6140</b>	<b>759</b>	<b>7652</b>	<b>14551</b>	<b>34.5</b>

A total of 8,849 females obtained the required grades in English compared with 4,943 males. At the same time 4,977 females obtained grades 1-3 in Mathematics and 3434 males obtained similar grades.

#### Distribution of Candidates Passing 5 Subjects, with Mathematics and/or English

Passed 5 or more subjects (with English and/or Math): **11, 251** (7,373 females and 3878 males).

Passed 5 or more subjects (with English and Math): **7,181** (4,555 females and 2,626 males).

Passed 5 or more subjects (with English only): **3,662** (2,666 females and 996 males).

Passed 5 or more subjects (with Math only): **408** (152 females and 256 males).

**Table 5: Subjects subsidized by the Government and the Private Sector**

	English	Mathematics	Info. Tech.	POA	POB
<b>Sitting (2013)</b>	<b>26489</b>	<b>22870</b>	<b>11160</b>	<b>6141</b>	<b>8458</b>
<b>Passing (2013)</b>	<b>16870</b>	<b>9659</b>	<b>8843</b>	<b>4945</b>	<b>7254</b>
<b>% Passing (2013)</b>	<b>63.7</b>	<b>42.2</b>	<b>79.2</b>	<b>80.5</b>	<b>85.8</b>
% Passing (2012)	52.0	37.5	80.5	60.3	87.1
% Passing (2011)	68.5	39.9	75.1	73.2	84.9
% Passing (2010)	70.8	44.7	81.4	67.9	84.3
% Passing (2009)	62.8	40.9	85.4	63.4	83.1

	Biology	Chemistry	H&S Bio	Int. Science	Physics
<b>Sitting (2013)</b>	<b>5510</b>	<b>5198</b>	<b>9866</b>	<b>6992</b>	<b>4714</b>
<b>Passing (2013)</b>	<b>4249</b>	<b>3469</b>	<b>6625</b>	<b>5180</b>	<b>3239</b>
<b>% Passing (2013)</b>	<b>77.1</b>	<b>66.7</b>	<b>67.1</b>	<b>74.1</b>	<b>68.7</b>
% Passing (2012)	75.4	63.3	59.8	72.6	76.5
% Passing (2011)	78.4	66.0	65.2	69.5	73.9
% Passing (2010)	76.4	70.5	68.2	78.1	72.8
% Passing (2009)	78.4	76.9	74.9	82.9	75.2

## Analysis of Public Schools' Performance

### Candidates Entered and Sat

Some **36,047** students were entered to sit the 2013 CSEC Examination, 15,658 males and 20,389 females. This represents approximately **85%** of the Grade 11 cohort of **42,200**. Of those entered, **35,278** or approximately **98%** sat the examinations; **20,041** females and **15,237** males. The number of students, who sat however, represented approximately **84%** of the Grade 11 cohort. (See Table 6)

### Subjects Entered and Sat

A total of **193,360** subject entries were from public secondary schools of which **187,080** were sat. As in previous years the number of subject entries by females exceeded those of the males. Females accounted for a total of **115,662** or approximately **60% of the entries** compared to

**77,698 or 40%** for the males. Of the subjects that were sat, **132,798, or 70.9%** were awarded grades 1-3.

**Table 6: Number and percentage of students who entered, sat and obtained at least one subject in the CSEC 2013 Examination by sex**

Sex	Number Entered	Number Sat	Number of Students who passed at least one Subject	Grade 11 Enrolment	Percentage of Grade 11 Enrolment that sat
Female	20389	20041	17671	21398	93.7
Male	15658	15237	12636	20802	73.2
Total	36047	35278	30307	42200	83.6

### Performance by Subject

Of the 35 subjects sat, 25 showed improvement in pass rates over 2012. The Arts and Sciences had increases in seven and six subjects respectively while the Business category showed increase in three subjects and Technical and Vocational in nine subjects. All categories saw increases in the average pass rates ranging from approximately two to eight percentage points when compared to 2012. A comparison of the average pass rates by subject areas saw the Business Category having the highest average pass rate (84.0%) which was approximately eight percentage points higher than that of the previous year.

Four subjects had average pass rates of over 90%. These were Agricultural Science (single and double awards), Food and Nutrition and Physical Education and Sport. As was the case in 2012, the highest average pass rate of 95.6% was in Physical Education and Sport. This however, represented a decrease of 1.1 percentage points over 2012.

In the Business category, Economics had the highest pass rate, while the lowest percentage was recorded for Principles of Accounts. All subjects in the business category, with the exception of Principles of Business which had a decrease of 1.3%, recorded increases over 2012.

The 2013 examinations saw the average attainment rate for the category of Arts increasing by 5.3 percentage points over that of 2012, moving from 64.2% to 69.5%. The average attainment rates for the Arts category ranged from 62.2% for Music to 83.2% for French. Only two of the nine subjects in this category (Religious Education and Social Studies) saw percentage decreases over 2012. It must be noted that performance in English Language improved by **11.7** percentage points. Some 6,140 students passed English only representing 14.5% of the Grade 11 cohort while 759 (1.8%) of the cohort passed Mathematics only. Approximately 18.0% of the cohort passed both Mathematics and English Language compared to 15.5% in 2012.

The average attainment rate for the Sciences was 58.9%, an increase from 55.2% in 2012. Only Physics saw a decrease by 7.8 percentage points, moving from 76.5 percent in 2012 to 68.7 percent in 2013. Mathematics saw an increase of 4.7 percentage points, moving from 37.5 to 42.2 percent. **Table 7** highlights the performance by subjects. **See Appendix 1** for trend performance by subjects (2009 – 2013).

### Absent, Cancelled and Ungraded Subject Entries

The total subject entries for 2013 were 193,360 compared to 199,330 in 2012. This represents a three percentage point decrease. The number of entries that were not sat in 2013 was 6,249 compared to 8,152 in 2012, a decrease of approximately 23%.

All subject categories showed a reduction in the percentage of entries not sat. It is to be noted that the numbers represented in the table as “did not sit” include those entries that were also cancelled. Two subjects (Building Technology - Woods and Visual Arts) in the Technical and Vocational Category saw the percentage of entries not sat remaining unchanged. English Language, Biology, Chemistry, Physics, Integrated Science, Mathematics and Information Technology, subjects subsidized by the Government, saw percentage decreases in the number of students who did not sit the examination. (See Appendix 2)

**Table 7: Performance in Subjects entered from Public Institutions**

SUBJECTS	2013				2012			
	No. Entering	No. Sitting	No. Attaining Gr 1-3	% Attaining Gr 1-3*	No. Entering	No. Sitting	No. Attaining Gr 1-3	% Attaining Gr 1-3*
<b>Arts</b>	<b>69130</b>	<b>67698</b>	<b>47073</b>	<b>69.5</b>	71544	69521	44661	64.2
Caribbean History	5548	5357	4028	75.2	5933	5688	4205	73.9
<b>English A</b>	<b>26868</b>	<b>26489</b>	<b>16870</b>	<b>63.7</b>	28168	27626	14366	52.0
English B	7494	7430	5949	80.1	7175	7075	5250	74.2
French	838	822	684	83.2	738	723	590	81.6
Geography	4425	4298	3100	72.1	4598	4377	2937	67.1
Music	177	156	97	62.2	168	139	74	53.2
Religious Education	2900	2820	2132	75.6	3344	3223	2643	82.0
Social Studies	16952	16487	11291	68.5	17382	16774	11781	70.2
Spanish	3928	3839	2922	76.1	4038	3896	2815	72.3
<b>Sciences</b>	<b>57334</b>	<b>55722</b>	<b>32802</b>	<b>58.9</b>	58858	56765	31357	55.2
Additional Mathematics	583	572	381	66.6	341	306	138	45.1
Biology	5621	5510	4249	77.1	5729	5598	4222	75.4
Chemistry	5338	5198	3469	66.7	5237	5073	3211	63.3
Human & Social Biology	10169	9866	6625	67.1	10500	10126	6053	59.8
Integrated Science	7386	6992	5180	74.1	7891	7344	5333	72.6

SUBJECTS	2013				2012			
	No. Entering	No. Sitting	No. Attaining Gr 1-3	% Attaining Gr 1-3*	No. Entering	No. Sitting	No. Attaining Gr 1-3	% Attaining Gr 1-3*
<b>Mathematics</b>	23354	22870	9659	42.2	24398	23729	8890	37.5
Physics	4883	4714	3239	68.7	4762	4589	3510	76.5
<b>Technical/Vocational</b>	<b>46607</b>	<b>43933</b>	<b>36279</b>	<b>82.6</b>	<b>47030</b>	<b>43630</b>	<b>35203</b>	<b>80.7</b>
Agricultural Science (DA)	466	452	431	95.4	559	551	511	92.7
Agricultural Science (SA)	3003	2864	2673	93.3	2927	2795	2542	90.9
Building Technology (Construction)	872	819	694	84.7	827	776	568	73.2
Building Technology (Woods)	1115	978	769	78.6	1272	1116	637	57.1
Clothing & Textiles	1695	1625	1189	73.2	1531	1428	1227	85.9
Electrical & Electronic Technology	2100	2007	1214	60.5	2261	2124	1323	62.3
Electronic Document Preparation & Mgmt	4776	4539	3813	84.0	4985	4646	4113	88.5
Food and Nutrition	5235	5121	4696	91.7	5242	5063	4527	89.4
Home Economics Management	3900	3769	3190	84.6	3925	3759	3159	84.0
Information Technology	11784	11160	8843	79.2	12102	11204	9015	80.5
Mechanical Engineering	1458	1347	996	73.9	1361	1229	800	65.1
Physical Education and Sport	3499	3254	3111	95.6	3323	3004	2905	96.7
Technical Drawing	3797	3433	2631	76.6	3790	3379	2050	60.7
Theatre Arts	690	660	564	85.5	648	599	514	85.8
Visual Arts	2217	1905	1465	76.9	2277	1957	1312	67.0
<b>Business</b>	<b>20289</b>	<b>19727</b>	<b>16567</b>	<b>84.0</b>	<b>21898</b>	<b>21157</b>	<b>16141</b>	<b>76.3</b>
Economics	928	902	809	89.7	935	914	618	67.6
Office Administration	4347	4226	3559	84.2	4871	4686	3765	80.3
Principles of Accounts	6399	6141	4945	80.5	7014	6693	4039	60.3
Principles of Business	8615	8458	7254	85.8	9078	8864	7719	87.1
<b>Total</b>	<b>193360</b>	<b>187080</b>	<b>132721</b>	<b>70.9</b>	<b>199330</b>	<b>191073</b>	<b>127362</b>	<b>66.7</b>

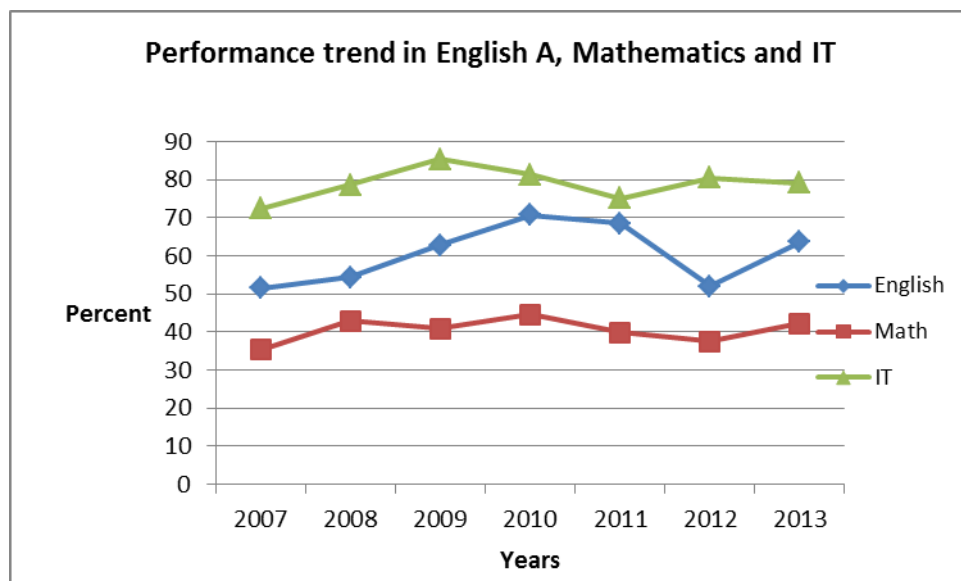
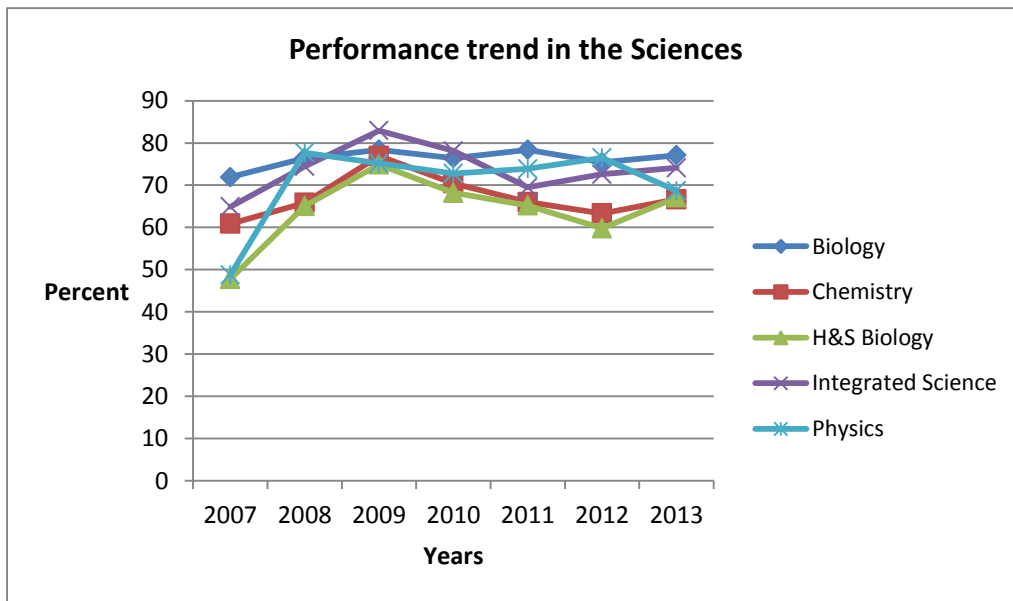
\*Percentage attainment is based on number sitting

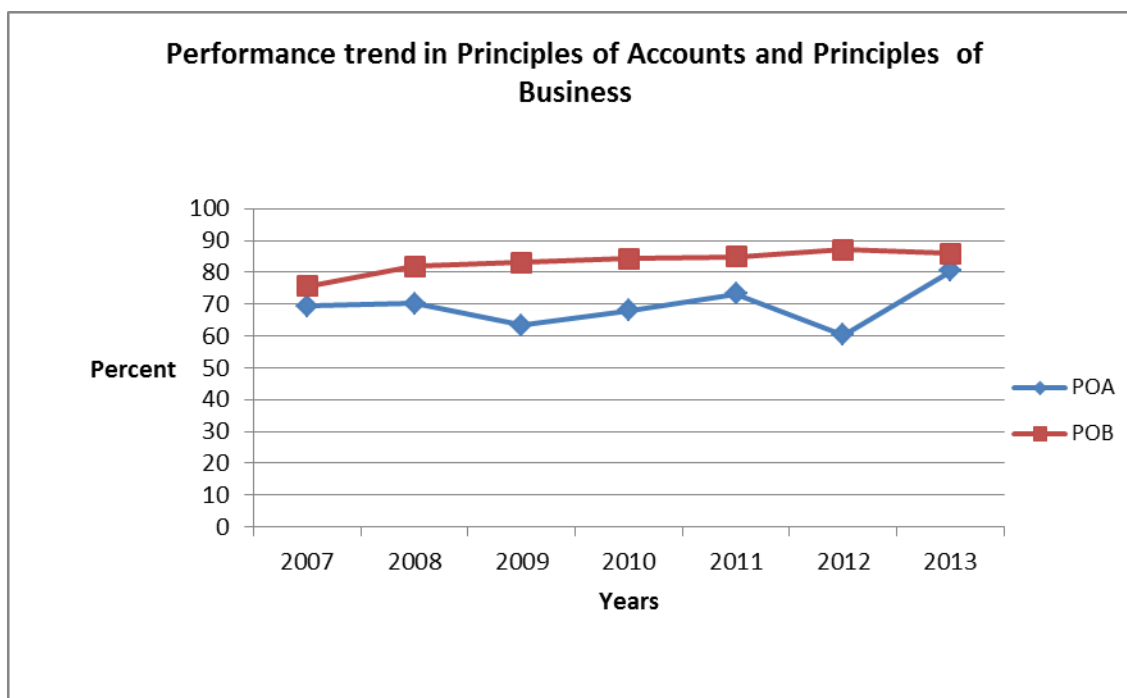
### Performance in the Subjects Subsidised by Government and the Private Sector

The Government of Jamaica (GOJ) continues to provide incentives for four (4) subjects, namely English 'A', Mathematics, Information Technology and a Science subject while the private

sector assists with Principles of Business and Principles of Accounts. The Charts below show the performance trend in these subjects over the period 2007–2013.

**Figure 1: Performance in subjects paid for by Government and Private Sector**





### Overall performance of Public School students by number of subjects sat and attained

**Table 8** gives a breakdown of the number of subjects sat by individual students. Some 11.0% of the students sat one subject, an increase of 0.4 percentage point over 2012. Of the total 35,278 students who sat in 2013, approximately 38% sat less than five subjects, similar to 2012. One less student sat 11 or more subjects in 2013 when compared to the 67 who sat in 2012. In 2013, the maximum number of subjects sat by any one student was 14 while in 2012 it was 15.

**Table 8: Number of students by number of subjects sat**

No. of Subjects Sat	No. of Students	Percentage of Total
1	3863	11.0
2	2959	8.4
3	2973	8.4
4	3431	9.7
5	3881	11.0
6	4304	12.2
7	4748	13.5
8	6507	18.4
9	2064	5.9
10	482	1.4
11	58	0.2
12	5	0.0
13	2	0.0

14	1	0.0
<b>Total</b>	<b>35278</b>	<b>100.0</b>

**Table 9** highlights the number of students by the number of subjects attained. Of the 35,278 students who sat the examinations, 4,971 or 14.1% did not pass any subjects, a reduction of 2.4 percentage points when compared to 2012. **Appendix 3** provides further details of the number of subjects sat and passed by gender and **Appendix 4** provides trend data.

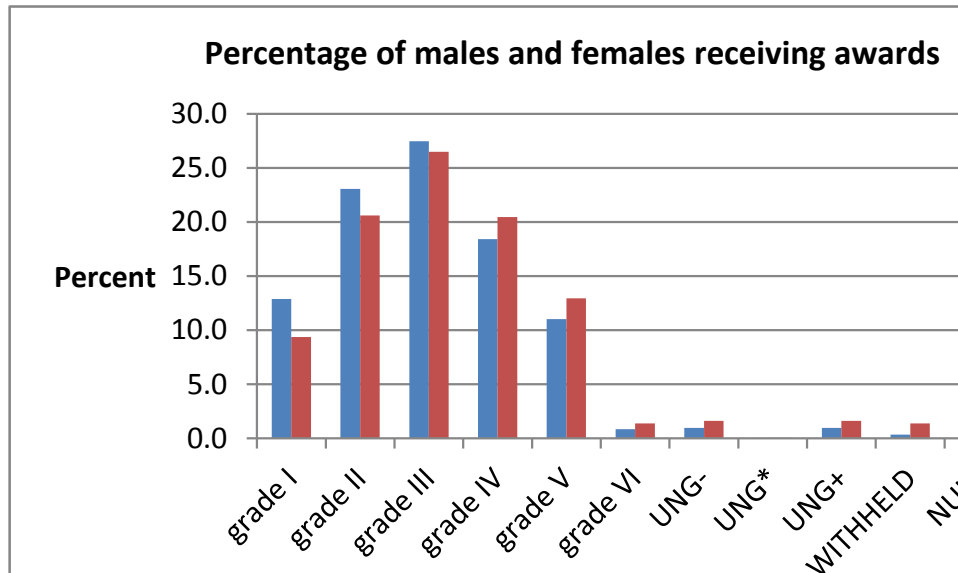
**Table 9: Number of Students by the Number of Subjects Passed**

No. of Subjects passed	No. of Students	Percentage of Total
0	4971	14.1
1	6062	17.2
2	3910	11.1
3	3224	9.1
4	2999	8.5
5	2955	8.4
6	3017	8.6
7	2920	8.3
8	3564	10.1
9	1272	3.6
10	340	1.0
11	38	0.1
12	3	0.0
13	2	0.0
14	1	0.0
<b>Total</b>	<b>35278</b>	<b>100.0</b>

## PERFORMANCE BY SEX

Of the 193,360 public school entries, 115,662 (**60 %**) were females while 77,698 (**40%**) were males. The performance by sex continues to show females receiving higher quality grades than their male counterparts (**See Figure 2**).

**Figure 2: Percentages of males and females receiving awards**



**Performance of Traditional, New/ Upgraded and Technical /Agricultural Schools**

Of the 187,080 subjects sat for the 2013 CSEC Examinations, 44.7% of those who sat was from Traditional High Schools, 42.2% from Upgraded High Schools, 9.6 from Technical High Schools and 3.4% and 0.1% from New and Agricultural High Schools respectively. The table below shows the performance of different types of schools.

**Table 10: Performance of Traditional and Non- Traditional Schools**

TYPE	Number Sat	% of Total Subject Sat	Number Passed	% Passed of those Sat
Agricultural	134	0.1	60	44.8
New	6339	3.4	4064	64.1
Technical	17889	9.6	11205	62.6
Traditional	83668	44.7	71010	84.9
Upgraded	79050	42.2	46382	58.7
Total	187080	100.00	132721	70.9

The average pass rate for subject entries from Traditional High Schools continue to be the highest with approximately 85% while the other school types have rates ranging from 44.8% to 64.1%.

## Matriculation to Tertiary Institutions

The core subjects for matriculation to tertiary level institutions are Mathematics and English 'A'. Of the Grade 11 cohort of 42,200 students, only 26,489 or 62.7% sat English 'A' and 22,870 or 54.2% sat Mathematics. **Appendix 5** gives details of students' performance in English 'A' and/or Mathematics by sex, school type, region and parish.

Only 26.7% of the students matriculated for tertiary level institutions. Matriculation for this purpose is defined as those students attaining grades 1-3 in 5 or more subjects including English 'A' and/or Mathematics. In 2013 there was a slight reduction of 0.1 percentage points in the students matriculating. See **Appendix 6** for further details on the students attaining 5 or more subjects. **Table 11** provides a trend analysis of students matriculating over the period 2009-2013.

The results continue to show that more females are matriculating than males. While 7,373 females matriculated, 3,878 males achieved similar status. The percentages of students matriculating by parish ranged from 13.6% in Hanover to 38.9% in St. Andrew.

**Table 11: Number of Secondary Level Students Passing 5 or more Subjects, 2009-2013\***

Year	5 including Maths and English A	5 including English A Only	5 including Maths Only	5 including Maths and or English A	% of Grade 11 Enrolment
2013	7181	3662	408	11251	26.7
2012	6383	4285	981	11649	26.8
2011	6606	4921	649	12176	28.5
2010	7330	4509	582	12421	29.4
2009	6208	4004	665	10877	26.4

\* The results include those students who would have sat and passed from other grade levels

## Performance by Regions

The six regions experienced improvements in all categories. The increases ranged from 0.8 percentage points in the Sciences for Region 5 to 11.4 percentage points for the Business category in Region 3. A breakdown of performance across regions is shown in **Appendix 7**.

# APPENDICES

**Appendix 1: Performance of Public Secondary School Students by Subjects**

Subjects	Number Sitting					Percentage Attaining Grades I-III				
	2009	2010	2011	2012	2013	2009	2010	2011	2012	2013
<b>Arts</b>										
Caribbean History	4976	5358	5124	5688	<b>5357</b>	63.6	67.8	77.3	<b>73.9</b>	<b>75.2</b>
<b>English Language</b>	<b>23214</b>	<b>24324</b>	<b>24592</b>	<b>27626</b>	<b>26489</b>	<b>62.8</b>	<b>70.8</b>	<b>68.5</b>	<b>52.0</b>	<b>63.7</b>
English Literature	6692	7084	7018	7075	<b>7430</b>	59.1	82.0	78.6	<b>74.2</b>	<b>80.1</b>
French	721	653	691	723	<b>822</b>	68.7	68.6	77.4	<b>81.6</b>	<b>83.2</b>
Geography	3841	3907	4112	4377	<b>4298</b>	60.5	68.7	67.7	<b>67.1</b>	<b>72.1</b>
Music	139	135	149	139	<b>156</b>	15.8	43.7	57.0	<b>53.2</b>	<b>62.2</b>
Religious Education	2962	3136	2990	3223	<b>2820</b>	78.6	86.8	84.9	<b>82.0</b>	<b>75.6</b>
Social Studies	14250	14420	15304	16774	<b>16487</b>	75.7	77.6	69.9	<b>70.2</b>	<b>68.5</b>
Spanish	3970	3848	3663	3896	<b>3839</b>	73.0	66.3	74.2	<b>72.3</b>	<b>76.1</b>
<b>Sciences</b>										
Additional Mathematics	-	-	-	306	<b>572</b>	-	-	-	<b>45.1</b>	<b>66.6</b>
Biology	4557	5080	5327	5598	<b>5510</b>	78.4	76.4	78.4	<b>75.4</b>	<b>77.1</b>
Chemistry	4175	4633	5031	5073	<b>5198</b>	76.9	70.5	66.0	<b>63.3</b>	<b>66.7</b>
Human & Social Biology	7789	8427	9041	10126	<b>9866</b>	74.9	68.2	65.2	<b>59.8</b>	<b>67.1</b>
Integrated Science	6363	6842	6766	7344	<b>6992</b>	82.9	78.1	69.5	<b>72.6</b>	<b>74.1</b>
<b>Mathematics</b>	<b>19990</b>	<b>20742</b>	<b>20850</b>	<b>23729</b>	<b>22870</b>	<b>40.9</b>	<b>44.7</b>	<b>39.9</b>	<b>37.5</b>	<b>42.2</b>
Physics	4041	4403	4340	4589	<b>4714</b>	75.2	72.8	73.9	<b>76.5</b>	<b>68.7</b>
<b>Technical/Vocational</b>										
Agri. Science (AS)	2079	2412	2472	2795	<b>2864</b>	87.3	89.5	90.9	<b>90.9</b>	<b>93.3</b>
Agri. Science (CS)	-	-	-			-	-	-		
Agri. Science (DA)	336	435	420	551	<b>452</b>	91.1	91.3	94.0	<b>92.7</b>	<b>95.4</b>
Building Technology Construction	692	665	782	776	<b>819</b>	79.0	82.9	81.6	<b>73.2</b>	<b>84.7</b>
Building Technology Woods	830	887	928	1116	<b>978</b>	66.4	74.3	68.0	<b>57.1</b>	<b>78.6</b>
Clothing & Textiles	1380	1320	1354	1428	<b>1625</b>	80.6	82.0	79.1	<b>85.9</b>	<b>73.2</b>
Electrical Technology	1966	2001	1982	2124	<b>2007</b>	46.1	58.0	43.6	<b>62.3</b>	<b>60.5</b>

Subjects	Number Sitting					Percentage Attaining Grades I-III				
	2009	2010	2011	2012	2013	2009	2010	2011	2012	2013
Electronic Document Prep. & Mgmt.	2931	4099	4355	4646	<b>4539</b>	87.6	89.3	82.7	<b>88.5</b>	<b>84</b>
Food & Nutrition	4471	4880	4883	5063	<b>5121</b>	86.9	92.1	92.6	<b>89.4</b>	<b>91.7</b>
Home Management	3309	3521	3516	3759	<b>3769</b>	85.4	84.7	88.8	<b>84</b>	<b>84.6</b>
Information Technology	9923	9279	10515	11204	<b>11160</b>	85.4	81.4	75.1	<b>80.5</b>	<b>79.2</b>
Mech. Eng. Technology	1038	1109	1078	1229	<b>1347</b>	57.6	60.5	54.1	<b>65.1</b>	<b>73.9</b>
Phys. Ed. & Sports	1377	2012	2442	3004	<b>3254</b>	92.3	96.7	94.8	<b>96.7</b>	<b>95.6</b>
Technical Drawing	2998	3158	3221	3379	<b>3433</b>	67.8	71.5	68.7	<b>60.7</b>	<b>76.6</b>
Theatre Arts	335	499	485	599	<b>660</b>	77.0	75.8	72.4	<b>85.8</b>	<b>85.5</b>
Visual Arts	1952	2077	1700	1957	<b>1905</b>	73.4	67.9	65.8	<b>67</b>	<b>76.9</b>
<b>Business</b>										
Economics	605	630	722	914	<b>902</b>	63.8	68.9	78.8	<b>67.6</b>	<b>89.7</b>
Office Administration	4576	4908	4556	4686	<b>4226</b>	81.6	81.2	88.8	<b>80.3</b>	<b>84.2</b>
Principles of Accounts	6905	6957	6682	6693	<b>6141</b>	63.4	67.9	73.2	<b>60.3</b>	<b>80.5</b>
Principles of Business	8077	8471	8312	8864	<b>8458</b>	83.1	84.3	84.9	<b>87.1</b>	<b>85.8</b>

**Appendix 2: Percentage of public schools students who did not sit or received ungraded in the CSEC Examinations by subject 2012-2013**

	2012					2013				
	Entered	*No. Did Not Sit	% Did Not Sit	No. Ungraded	% Ungraded	Entered	*No. Did Not Sit	% Did Not Sit	No. Ungraded	% Ungraded
<b>Arts</b>	71544	2023	<b>2.8</b>	1133	1.6	69130	1432	2.1	807	1.2
Caribbean History	5933	245	4.1	134	2.3	5548	191	3.4	99	1.8
English Language	28168	542	<b>1.9</b>	4	0.0	26868	379	1.4	2	0
English Literature	7175	100	<b>1.4</b>	0	0.0	7494	64	0.9	2	0
French	738	15	<b>2.0</b>	0	0.0	838	16	1.9	0	0
Geography	4598	221	<b>4.8</b>	83	1.8	4425	127	2.9	79	1.8
Music	168	29	17.3	6	3.6	177	21	11.9	2	1.1
Religious Education	3344	121	3.6	153	4.6	2900	80	2.8	97	3.3
Social Studies	17382	608	<b>3.5</b>	752	4.3	16952	465	2.7	526	3.1
Spanish	4038	142	3.5	1	0.0	3928	89	2.3	0	0
<b>Sciences</b>	<b>58858</b>	<b>2093</b>	<b>3.6</b>	<b>627</b>	<b>1.1</b>	<b>57334</b>	<b>1612</b>	<b>2.8</b>	<b>527</b>	<b>0.9</b>
Additional Mathematics	341	35	10.3	6	1.8	583	11	1.9	1	0.2
Biology	5729	131	<b>2.3</b>	72	1.3	5621	111	2.0	60	1.1
Chemistry	5237	164	<b>3.1</b>	60	1.1	5338	140	2.6	45	0.8
Human & Soc. Biology	10500	374	3.6	2	0.0	10169	303	3.0	3	0
Integrated Science	7891	547	6.9	388	4.9	7386	394	5.3	343	4.6
Mathematics	24398	669	<b>2.7</b>	9	0.0	23354	484	2.1	5	0
Physics	4762	173	3.6	90	1.9	4883	169	3.5	70	1.4
<b>Technical/Vocational</b>	<b>47030</b>	<b>3400</b>	<b>7.2</b>	<b>1306</b>	<b>2.8</b>	<b>46607</b>	<b>2674</b>	<b>5.7</b>	<b>1016</b>	<b>2.2</b>
Agri. Science (CS)										
Agri. Science (SA)	2927	132	4.5	60	2.0	3003	139	<b>4.6</b>	38	1.3
Agri. Science (DA)	559	8	1.4	4	0.7	466	14	<b>3.0</b>	4	0.9
Building Technology Construction	827	51	6.2	23	2.8	872	53	6.1	16	1.8
Building Technology Woods	1272	156	12.3	50	3.9	1115	137	12.3	29	2.6
Clothing & Textiles	1531	103	<b>6.7</b>	11	0.7	1695	70	4.1	10	0.6
Electrical Technology	2261	137	<b>6.1</b>	78	3.4	2100	93	4.4	53	2.5
Electronic Data Prep.	4985	339	<b>6.8</b>	86	1.7	4776	237	5.0	143	3
Food & Nutrition	5242	179	<b>3.4</b>	25	0.5	5235	114	2.2	13	0.2
Home Management	3925	166	<b>4.2</b>	27	0.7	3900	131	3.4	20	0.5
Information Tech	12102	898	<b>7.4</b>	503	4.2	11784	624	5.3	366	3.1
Mech. Eng. Technology	1361	132	<b>9.7</b>	61	4.5	1458	111	7.6	42	2.9

	2012					2013				
	Entered	*No. Did Not Sit	% Did Not Sit	No. Un-grad ed	% Un-graded	Entered	*No. Did Not Sit	% Did Not Sit	No. Un-graded	% Un-graded
Phys. Ed. & Sports	3323	319	9.6	45	1.4	3499	245	7.0	37	1.1
Technical Drawing	3790	411	<b>10.8</b>	157	4.1	3797	364	9.6	112	2.9
Theatre Arts	648	49	<b>7.6</b>	43	6.6	690	30	4.3	47	6.8
Visual Arts	2277	320	14.1	133	5.8	2217	312	14.1	86	3.9
<b>Business</b>	21898	741	3.6	416	1.9	20289	562	2.8	313	1.5
Economics	935	21	2.2	26	2.8	928	26	<b>2.8</b>	13	1.4
Office Administration	4871	185	3.8	102	2.1	4347	121	2.8	77	1.8
Prin. of Accounts	7014	321	<b>4.6</b>	157	2.2	6399	258	4	109	1.7
Principles of Business	9078	214	<b>2.4</b>	131	1.4	8615	157	1.8	114	1.3

**Appendix 3: The Number of Subjects Sat and Passed/Failed in 2013 CSEC Examination by Public School Students**

<b>Subjects Sat</b>	<b>0</b>	<b>1</b>	<b>2</b>	<b>3</b>	<b>4</b>	<b>5</b>	<b>6</b>	<b>7</b>	<b>8</b>	<b>9</b>	<b>10</b>	<b>11</b>	<b>12</b>	<b>13</b>	<b>14</b>	<b>Total Passed</b>	<b>Total Sat</b>
<b>1</b>	1758	2105	0	0	0	0	0	0	0	0	0	0	0	0	0	<b>2105</b>	<b>3863</b>
<b>2</b>	1222	1023	714	0	0	0	0	0	0	0	0	0	0	0	0	<b>1737</b>	<b>2959</b>
<b>3</b>	917	971	695	390	0	0	0	0	0	0	0	0	0	0	0	<b>2056</b>	<b>2973</b>
<b>4</b>	590	896	871	691	383	0	0	0	0	0	0	0	0	0	0	<b>2841</b>	<b>3431</b>
<b>5</b>	294	619	806	931	765	466	0	0	0	0	0	0	0	0	0	<b>3587</b>	<b>3881</b>
<b>6</b>	146	313	543	718	882	987	715	0	0	0	0	0	0	0	0	<b>4158</b>	<b>4304</b>
<b>7</b>	37	112	217	357	659	937	1236	1193	0	0	0	0	0	0	0	<b>4711</b>	<b>4748</b>
<b>8</b>	7	22	61	121	281	497	943	1481	3094	0	0	0	0	0	0	<b>6500</b>	<b>6507</b>
<b>9</b>	0	1	2	15	28	60	113	227	427	1191	0	0	0	0	0	<b>2064</b>	<b>2064</b>
<b>10</b>	0	0	1	1	1	7	8	18	37	77	332	0	0	0	0	<b>482</b>	<b>482</b>
<b>11</b>	0	0	0	0	0	1	1	1	6	3	8	38	0	0	0	<b>58</b>	<b>58</b>
<b>12</b>	0	0	0	0	0	0	1	0	0	1	0	0	3	0	0	<b>5</b>	<b>5</b>
<b>13</b>	0	0	0	0	0	0	0	0	0	0	0	0	0	2	0	<b>2</b>	<b>2</b>
<b>14</b>	0	0	0	0	0	0	0	0	0	0	0	0	0	0	1	<b>1</b>	<b>1</b>
<b>Total</b>	<b>4971</b>	<b>6062</b>	<b>3910</b>	<b>3224</b>	<b>2999</b>	<b>2955</b>	<b>3017</b>	<b>2920</b>	<b>3564</b>	<b>1272</b>	<b>340</b>	<b>38</b>	<b>3</b>	<b>2</b>	<b>1</b>	<b>30307</b>	<b>35278</b>

### Appendix 3 Cont'd

**The Number of Subjects Female Candidates Sat and Passed/Failed in the 2013 CSEC Examination by Public School Students**

<b>Subjects Sat</b>	<b>0</b>	<b>1</b>	<b>2</b>	<b>3</b>	<b>4</b>	<b>5</b>	<b>6</b>	<b>7</b>	<b>8</b>	<b>9</b>	<b>10</b>	<b>11</b>	<b>12</b>	<b>13</b>	<b>Total Passed</b>	<b>Total Sat</b>
<b>1</b>	849	1213	0	0	0	0	0	0	0	0	0	0	0	0	1213	2062
<b>2</b>	522	433	343	0	0	0	0	0	0	0	0	0	0	0	776	1298
<b>3</b>	432	418	291	205	0	0	0	0	0	0	0	0	0	0	914	1346
<b>4</b>	295	430	401	332	205	0	0	0	0	0	0	0	0	0	1368	1663
<b>5</b>	162	309	426	466	420	293	0	0	0	0	0	0	0	0	1914	2076
<b>6</b>	84	184	304	397	511	618	421	0	0	0	0	0	0	0	2435	2519
<b>7</b>	21	61	116	218	390	567	786	714	0	0	0	0	0	0	2852	2873
<b>8</b>	5	15	35	66	164	323	617	987	2187	0	0	0	0	0	4394	4399
<b>9</b>	0	1	2	14	19	37	81	147	300	844	0	0	0	0	1445	1445
<b>10</b>	0	0	1	0	1	7	6	11	26	55	210	0	0	0	317	317
<b>11</b>	0	0	0	0	0	1	1	1	6	1	4	25	0	0	39	39
<b>12</b>	0	0	0	0	0	0	0	0	0	0	0	0	2	0	2	2
<b>13</b>	0	0	0	0	0	0	0	0	0	0	0	0	0	2	2	2
<b>Total</b>	<b>2370</b>	<b>3064</b>	<b>1919</b>	<b>1698</b>	<b>1710</b>	<b>1846</b>	<b>1912</b>	<b>1860</b>	<b>2519</b>	<b>900</b>	<b>214</b>	<b>25</b>	<b>2</b>	<b>2</b>	<b>17671</b>	<b>20041</b>

**Appendix 3 Cont'd**

**The Number of Subjects Male Candidates Sat and Passed/Failed in the 2013 CSEC Examination by Public School Students**

<b>Subjects Sat</b>	<b>0</b>	<b>1</b>	<b>2</b>	<b>3</b>	<b>4</b>	<b>5</b>	<b>6</b>	<b>7</b>	<b>8</b>	<b>9</b>	<b>10</b>	<b>11</b>	<b>12</b>	<b>13</b>	<b>Total Passed</b>	<b>Total Sat</b>
1	909	892	0	0	0	0	0	0	0	0	0	0	0	0	892	1801
2	700	590	371	0	0	0	0	0	0	0	0	0	0	0	961	1661
3	485	553	404	185	0	0	0	0	0	0	0	0	0	0	1142	1627
4	295	466	470	359	178	0	0	0	0	0	0	0	0	0	1473	1768
5	132	310	380	465	345	173	0	0	0	0	0	0	0	0	1673	1805
6	62	129	239	321	371	369	294	0	0	0	0	0	0	0	1723	1785
7	16	51	101	139	269	370	450	479	0	0	0	0	0	0	1859	1875
8	2	7	26	55	117	174	326	494	907	0	0	0	0	0	2106	2108
9	0	0	0	1	9	23	32	80	127	347	0	0	0	0	619	619
10	0	0	0	1	0	0	2	7	11	22	122	0	0	0	165	165
11	0	0	0	0	0	0	0	0	0	2	4	13	0	0	19	19
12	0	0	0	0	0	0	1	0	0	1	0	0	1	0	3	3
14	0	0	0	0	0	0	0	0	0	0	0	0	0	1	1	1
<b>Total</b>	<b>2601</b>	<b>2998</b>	<b>1991</b>	<b>1526</b>	<b>1289</b>	<b>1109</b>	<b>1105</b>	<b>1060</b>	<b>1045</b>	<b>372</b>	<b>126</b>	<b>13</b>	<b>1</b>	<b>1</b>	<b>12636</b>	<b>15237</b>

#### Appendix 4: Performance of Students by Subjects Gained 2008-2013

Subjects Passed	2008		2009		2010		2011		2012		2013	
	No.	%	No.	%	No.	%	No.	%	No.	%	No.	%
0	6004	19.0	5261	16.2	4820	14.2	5092	15.2	6004	16.5	4971	14.1
1	5458	17.3	5558	17.1	5750	17.0	5387	16.1	6447	17.7	6062	17.2
2	3764	11.9	3798	11.7	3756	11.1	3726	11.1	4236	11.6	3910	11.1
3	3130	9.9	3215	9.9	3263	9.6	3140	9.4	3499	9.6	3224	9.1
4	2858	9.0	3034	9.3	3187	9.4	3048	9.1	3275	9.0	2999	8.5
5	2541	8.0	2781	8.5	2991	8.8	3059	9.1	2980	8.2	2955	8.4
6	2328	7.4	2677	8.2	2793	8.2	2818	8.4	2807	7.7	3017	8.6
7	2195	6.9	2505	7.7	2889	8.5	2653	7.9	2687	7.4	2920	8.3
8	2537	8.0	2846	8.7	3231	9.5	3316	9.9	3135	8.6	3564	10.1
9	654	2.1	751	2.3	1023	3.0	1093	3.3	1109	3.0	1272	3.6
10	126	0.4	128	0.4	166	0.5	167	0.5	269	0.7	340	1.0
11	8	0.0	13	0.0	18	0.1	17	0.1	40	0.1	38	0.1
12	1	0.0	1	0.0	1	0.0	0	0.0	3	0.0	3	0.0
13	-	-	-	-	-	-	-	-	3	0.0	2	0.0
14	-	-	-	-	-	-	-	-	1	0.0	1	0.0
15	-	-	-	-	-	-	-	-	1	0.0	-	-
<b>Total</b>	<b>31,604</b>	<b>100.0</b>	<b>32568</b>	<b>100.0</b>	<b>33888</b>	<b>100</b>	<b>33516</b>	<b>100</b>	<b>36496</b>	<b>100.0</b>	<b>35278</b>	<b>100.0</b>

#### Appendix 5

##### Performance in English A and Mathematics in 2013 CSEC Examinations by Sex, Region, Parish, Type and School Type

SEX	English A Only	Mathematics Only	Mathematics & English	English A and or Mathematics	% of Cohort
Female	4115	243	4734	9092	42.5
Male	2025	516	2918	5459	26.2
<b>Total</b>	<b>6140</b>	<b>759</b>	<b>7652</b>	<b>14551</b>	<b>34.5</b>

**Appendix 5 cont'd**

<b>REGION</b>	<b>English A Only</b>	<b>Mathematics Only</b>	<b>Mathematics &amp; English</b>	<b>English A and or Mathematics</b>	<b>% of Cohort</b>
<b>Brown's Town</b>	753	57	676	1486	36.3
<b>Kingston</b>	1590	224	3217	5031	47.8
<b>Mandeville</b>	803	93	988	1884	33.8
<b>Montego Bay</b>	813	96	912	1821	27.7
<b>Old Harbour</b>	1595	181	1320	3096	17.0
<b>Port Antonio</b>	586	108	539	1233	25.9
<b>Total</b>	<b>6140</b>	<b>759</b>	<b>7652</b>	<b>14551</b>	<b>34.5</b>

<b>PARISH</b>	<b>English A Only</b>	<b>Mathematics Only</b>	<b>Mathematics &amp; English</b>	<b>English A and or Mathematics</b>	<b>% of Cohort</b>
<b>Clarendon</b>	533	82	706	1321	30.4
<b>Hanover</b>	155	16	136	307	18.7
<b>Kingston</b>	423	86	990	1499	44.3
<b>Manchester</b>	428	38	481	947	38.7
<b>Portland</b>	187	28	136	351	25.6
<b>St. Andrew</b>	1167	138	2227	3532	49.4
<b>St. Ann</b>	555	37	418	1010	39.4
<b>St. Catherine</b>	1094	115	790	1999	28.5
<b>St. Elizabeth</b>	343	39	331	713	29.1
<b>St. James</b>	384	49	526	959	34.0
<b>St. Mary</b>	260	54	253	567	29.3
<b>St. Thomas</b>	139	26	150	315	21.7
<b>Trelawny</b>	198	20	258	476	31.1
<b>Westmoreland</b>	274	31	250	555	26.4
<b>Total</b>	<b>6140</b>	<b>759</b>	<b>7652</b>	<b>14551</b>	<b>34.5</b>

<b>TYPE</b>	<b>English A Only</b>	<b>Mathematics Only</b>	<b>Mathematics &amp; English</b>	<b>English A and or Mathematics</b>	<b>% of Cohort</b>
<b>Agricultural</b>	2			2	2.2
<b>New</b>	197	22	119	338	11.2
<b>Technical</b>	658	87	357	1102	25.9
<b>Traditional</b>	2528	301	5862	8691	73.2
<b>Upgraded</b>	2755	349	1314	4418	19.2
<b>Total</b>	<b>6140</b>	<b>759</b>	<b>7652</b>	<b>14551</b>	<b>34.5</b>

**Appendix 5 Cont'd**

<b>SCHOOLTYPE</b>	<b>English A Only</b>	<b>Mathematics Only</b>	<b>Mathematics &amp; English</b>	<b>English A and or Mathematics</b>	<b>% of Cohort</b>
<b>Agricultural High</b>	2			2	2.2
<b>Secondary High</b>	5480	672	7295	13447	35.5
<b>Technical High</b>	658	87	357	1102	25.9
<b>Total</b>	<b>6140</b>	<b>759</b>	<b>7652</b>	<b>14551</b>	<b>34.5</b>

## Appendix 6

### Performance in 5 or more Subjects including English Language or Mathematics or both by Sex, Region, Parish, School Type , Type and School

SEX	5 Subjects including English A	5 Subjects including Mathematics	5 Subjects including Mathematics & English A	5 Subjects including English A and or Mathematics	% of Cohort
FEMALE	2666	152	4555	7373	34.5
MALE	996	256	2626	3878	18.6
<b>Total</b>	<b>3662</b>	<b>408</b>	<b>7181</b>	<b>11251</b>	<b>26.7</b>

REGION	5 Subjects including English A	5 Subjects including Mathematics	5 Subjects including Mathematics & English A	5 Subjects including English A and or Mathematics	% of Cohort
Brown's Town	494	36	642	1172	28.6
Kingston	889	115	2989	3993	37.9
Mandeville	522	64	855	1441	25.9
Montego Bay	441	50	859	1350	20.6
Old Harbour	937	97	1328	2362	22.1
Port Antonio	379	46	508	933	19.6
<b>Total</b>	<b>3662</b>	<b>408</b>	<b>7181</b>	<b>11251</b>	<b>26.7</b>

PARISH	5 Subjects including English A	5 Subjects including Mathematics	5 Subjects including Mathematics & English	5 Subjects including English A and or Mathematics	% of Cohort
Clarendon	345	47	681	1073	24.7
Hanover	87	8	128	223	13.6
Kingston	262	51	899	1212	35.8
Manchester	280	28	442	750	30.6
Portland	135	11	133	279	20.4
St. Andrew	627	64	2090	2781	38.9
St. Ann	361	23	393	777	30.3
St. Catherine	604	59	734	1397	19.9
St. Elizabeth	230	27	326	583	23.8
St. James	227	28	492	747	26.5
St. Mary	163	24	234	421	21.7
St. Thomas	81	11	141	233	16.1
Trelawny	133	13	249	395	25.8
Westmoreland	127	14	239	380	18.1
<b>Total</b>	<b>3662</b>	<b>408</b>	<b>7181</b>	<b>11251</b>	<b>26.7</b>

### Appendix 6 Cont'd

SCHOOLTYPE	5 Subjects including English A	5 Subjects including Mathematics	5 Subjects including Mathematics & English A	5 Subjects including English A and or Mathematics	% of Cohort
Secondary High	3310	367	6864	10541	27.8
Technical High	352	41	317	710	16.7
<b>Total</b>	<b>3662</b>	<b>408</b>	<b>7181</b>	<b>11251</b>	<b>26.7</b>

TYPE	5 Subjects including English A	5 Subjects including Mathematics	5 Subjects including Mathematics & English	5 Subjects including English A and or Mathematics	% of Cohort
New	119	14	108	241	8.0
Technical	352	41	317	710	16.7
Traditional	1678	184	5575	7437	62.6
Upgraded	1513	169	1181	2863	12.5
<b>Total</b>	<b>3662</b>	<b>408</b>	<b>7181</b>	<b>11251</b>	<b>26.7</b>

**Appendix 7: Regional Performance in 2013 CSEC Examinations**

Subjects	Region 1			Region 2			Region 3			Region 4			Region 5			Region 6			National		
	Total I - III	Total Sitting	%	Total I - III	Total Sitting	%	Total I - III	Total Sitting	%	Total I - III	Total Sitting	%	Total I - III	Total Sitting	%	Total I - III	Total Sitting	%	Total I - III	Total Sitting	%
<b>Arts</b>	<b>16415</b>	<b>21683</b>	<b>75.7</b>	<b>3802</b>	<b>6029</b>	<b>63.1</b>	<b>4850</b>	<b>7309</b>	<b>66.4</b>	<b>5721</b>	<b>8144</b>	<b>70.2</b>	<b>5665</b>	<b>8058</b>	<b>70.3</b>	<b>10620</b>	<b>16475</b>	<b>64.5</b>	47073	67698	<b>69.5</b>
CARIBBEAN HISTORY	1624	2146	75.7	316	428	73.8	377	523	61.0	366	510	66.4	431	554	77.8	914	1196	76.4	4028	5357	75.2
ENGLISH A	5522	7703	71.7	1472	2642	55.7	1619	2655	77.8	2219	3344	80.6	2011	3220	62.5	4027	6925	58.2	16870	26489	63.7
ENGLISH B	2786	3306	84.3	362	461	78.5	629	809	86.7	473	587	90.5	594	749	79.3	1105	1518	72.8	5949	7430	80.1
FRENCH	476	585	81.4	18	27	66.7	39	45	57.7	19	21	76.6	116	126	92.1	16	18	88.9	684	822	83.2
GEOGRAPHY	1218	1517	80.3	218	328	66.5	180	312	53.5	555	725	69.6	383	541	70.8	546	875	62.4	3100	4298	72.1
MUSIC	12	14	85.7	10	17	58.8	23	43	70.6	16	23	86.4	15	21	71.4	21	38	55.3	97	156	62.2
RELIGIOUS EDUCATION	803	1007	79.7	193	228	84.6	178	252	66.8	159	184	68.7	161	270	59.6	638	879	72.6	2132	2820	75.6
SOCIAL STUDIES	2772	3950	70.2	1061	1676	63.3	1458	2183	71.3	1510	2199	73.3	1603	2135	75.1	2887	4344	66.5	11291	16487	68.5
SPANISH	1202	1455	82.6	152	222	68.5	347	487	54.3	404	551	73.3	351	442	79.4	466	682	68.3	2922	3839	76.1
<b>Sciences</b>	<b>10825</b>	<b>16439</b>	<b>65.8</b>	<b>3087</b>	<b>5609</b>	<b>55.0</b>	<b>3248</b>	<b>5978</b>	<b>54.3</b>	<b>4212</b>	<b>7130</b>	<b>59.1</b>	<b>4133</b>	<b>6969</b>	<b>59.3</b>	<b>7297</b>	<b>13597</b>	<b>53.7</b>	32802	55722	<b>58.9</b>
ADDITIONAL MATHEMATICS	259	364	71.2	19	24	79.2	-	-		15	33	45.5	23	42	54.8	65	109	59.6	381	572	66.6
BIOLOGY	1640	1991	82.4	322	467	69.0	346	485	71.3	538	655	82.1	558	716	77.9	845	1196	70.7	4249	5510	77.1
CHEMISTRY	1420	1927	73.7	250	381	65.6	319	490	65.1	389	624	62.3	429	630	68.1	662	1146	57.8	3469	5198	66.7
HUMAN AND SOCIAL BIOLOGY	1511	2241	67.4	748	1163	64.3	859	1230	69.8	1108	1566	70.8	909	1272	71.5	1490	2394	62.2	6625	9866	67.1
INTEGRATED SCIENCE	709	906	78.3	725	1073	67.6	686	959	71.5	629	769	81.8	761	1030	73.9	1670	2255	74.1	5180	6992	74.1
MATHEMATICS	3919	7268	53.9	779	2111	36.9	788	2442	32.3	1179	2898	40.7	1026	2641	38.8	1968	5510	35.7	9659	22870	42.2
PHYSICS	1367	1742	78.5	244	390	62.6	250	372	67.2	354	585	60.5	427	638	66.9	597	987	60.5	3239	4714	68.7
<b>Technical/Vocational</b>	<b>9176</b>	<b>10975</b>	<b>83.6</b>	3837	4825	<b>79.5</b>	3323	4062	<b>81.8</b>	<b>5306</b>	<b>6440</b>	<b>82.4</b>	<b>4932</b>	<b>5867</b>	<b>84.1</b>	<b>9705</b>	<b>11764</b>	<b>82.5</b>	36279	43933	<b>82.6</b>
AGRICULTURAL SCIENCE (DA)				99	109	90.8	-	-		53	53	100.0	61	66	92.4	218	224	97.3	431	452	95.4
AGRICULTURAL SCIENCE (SA)	172	186	92.5	404	450	89.8	390	397	98.2	416	437	95.2	420	445	94.4	871	949	91.8	2673	2864	93.3
BUILDING TECHNOLOGY (CONST)	192	218	88.1	117	146	80.1	63	72	87.5	103	121	85.1	115	128	89.8	104	134	77.6	694	819	84.7
BUILDING TECHNOLOGY (WOODS)	139	178	78.1	131	170	77.1	74	87	85.1	88	120	73.3	63	76	82.9	274	347	79.0	769	978	78.6
CLOTHING AND TEXTILES	280	400	70.0	141	198	71.2	91	136	66.9	166	195	85.1	130	185	70.3	381	511	74.6	1189	1625	73.2
ELECTRICAL AND ELECTRONIC TECHNOLOGY	268	407	65.8	118	199	59.3	148	272	54.4	158	279	56.6	163	302	54.0	359	548	65.5	1214	2007	60.5
ELECTRONIC DOCUMENT PREPARATION AND	1276	1509	84.6	324	396	81.8	325	398	81.7	545	636	85.7	464	546	85.0	879	1054	83.4	3813	4539	84.0

Subjects	Region 1			Region 2			Region 3			Region 4			Region 5			Region 6			National		
	Total I - III	Total Sitting	%	Total I - III	Total Sitting	%	Total I - III	Total Sitting	%	Total I - III	Total Sitting	%	Total I - III	Total Sitting	%	Total I - III	Total Sitting	%	Total I - III	Total Sitting	%
MANAGEMENT																					
FOOD AND NUTRITION	1034	1136	91.0	499	554	90.1	522	577	90.5	788	845	93.3	548	600	91.3	1305	1409	92.6	4696	5121	91.7
HOME ECONOMICS	565	683	82.7	238	335	71.0	510	565	90.3	459	524	87.6	408	474	86.1	1010	1188	85.0	3190	3769	84.6
INFORMATION TECHNOLOGY	2929	3419	85.7	860	1197	71.8	461	625	73.8	1211	1643	73.7	1476	1763	83.7	1906	2513	75.8	8843	11160	79.2
MECHANICAL ENGINEERING	268	329	81.5	59	92	64.1	99	146	67.8	186	242	76.9	131	173	75.7	253	365	69.3	996	1347	73.9
TECHNOLOGY																					
PHYSICAL EDUCATION AND	637	658	96.8	373	391	95.4	288	312	92.3	556	594	93.6	323	336	96.1	934	963	97.0	3111	3254	95.6
SPORT																					
TECHNICAL DRAWING	742	1004	73.9	245	302	81.1	243	330	73.6	312	409	76.3	402	506	79.4	687	882	77.9	2631	3433	76.6
THEATRE ARTS	189	222	85.1	12	15	80.0	8	22	36.4	98	105	93.3	74	77	96.1	183	219	83.6	564	660	85.5
VISUAL ARTS	485	626	77.5	217	271	80.1	101	123	82.1	167	237	70.5	154	190	81.1	341	458	74.5	1465	1905	76.9
<b>Business</b>	5588	6580	<b>84.9</b>	1534	1920	<b>79.9</b>	1096	1325	<b>82.7</b>	2157	2533	<b>85.2</b>	1947	2310	<b>84.3</b>	4245	5059	<b>83.9</b>	16567	19727	<b>84.0</b>
ECONOMICS	317	346	91.6	78	85	91.8	2	5	40.0	59	63	93.7	183	211	86.7	170	192	88.5	809	902	89.7
OFFICE ADMINISTRATION	1058	1247	84.8	307	410	74.9	194	253	76.7	582	689	84.5	315	380	82.9	1103	1247	88.5	3559	4226	84.2
PRINCIPLES OF ACCOUNTS	1851	2230	83.0	462	572	80.8	328	422	77.7	600	742	80.9	510	666	76.6	1194	1509	79.1	4945	6141	80.5
PRINCIPLES OF BUSINESS	2362	2757	85.7	687	853	80.5	572	645	88.7	916	1039	88.2	939	1053	89.2	1778	2111	84.2	7254	8458	85.8
<b>Total</b>	<b>42004</b>	<b>55677</b>	<b>75.4</b>	<b>12260</b>	<b>18383</b>	<b>66.7</b>	<b>12517</b>	<b>18674</b>	<b>67.0</b>	<b>17396</b>	<b>24247</b>	<b>71.7</b>	<b>16677</b>	<b>23204</b>	<b>71.9</b>	<b>31867</b>	<b>46895</b>	<b>68.0</b>	132721	187080	<b>70.9</b>