

## GPS Technology – Blackberry

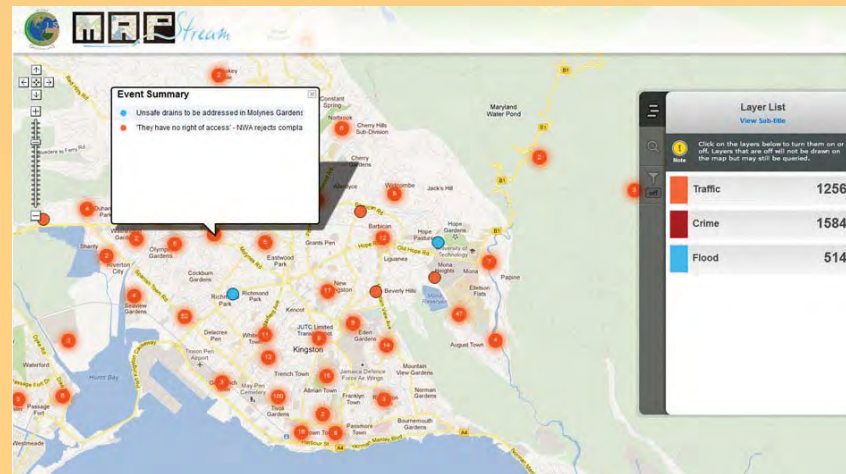
GasLo signals Mona Geoinformatics Institute's (MGI) debut into the mobile programming world. GasLo is a Blackberry mobile application that allows users to find the cheapest gas stations closest to their location.

Even if the phone is not equipped with GPS technology, the motorist may use the application to locate gas stations. The application will be updated weekly to ensure the delivery of current information. The application unites GIS and Computer Science in a fashion that continues a trend that started long ago at MGI.



## Mapstream

Mapstream is a new framework being developed in an attempt to extract information from social data streams (such as Twitter and Facebook) and present it in a meaningful geographic context. The result will be the creation of a tool that can 'map' social trends. For example, Mapstream will be able to recognise trending reports on Twitter or Facebook of flooding in a particular area, and show this occurrence live on a map.



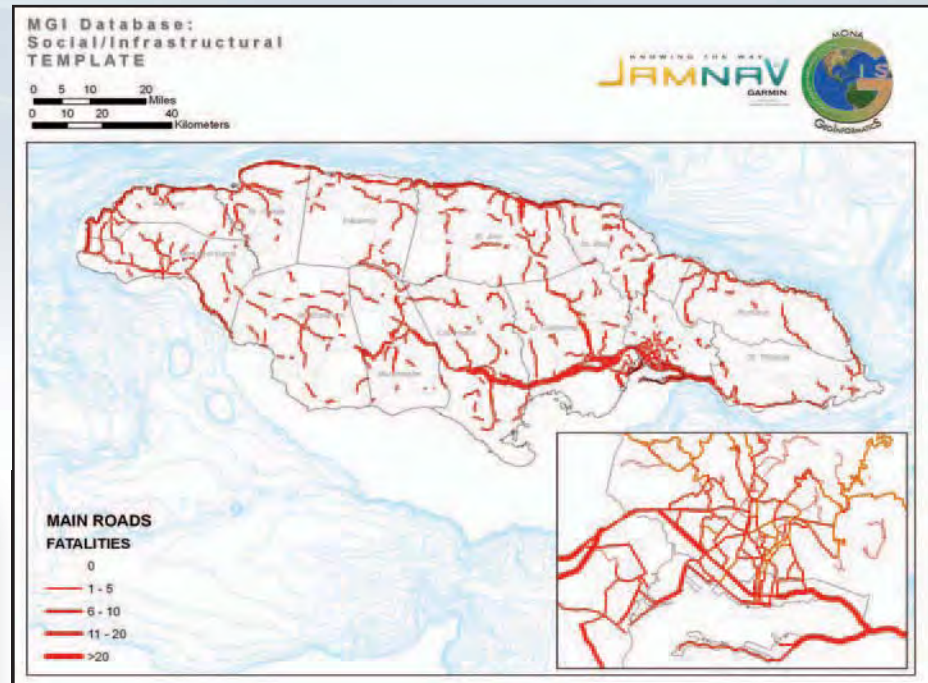
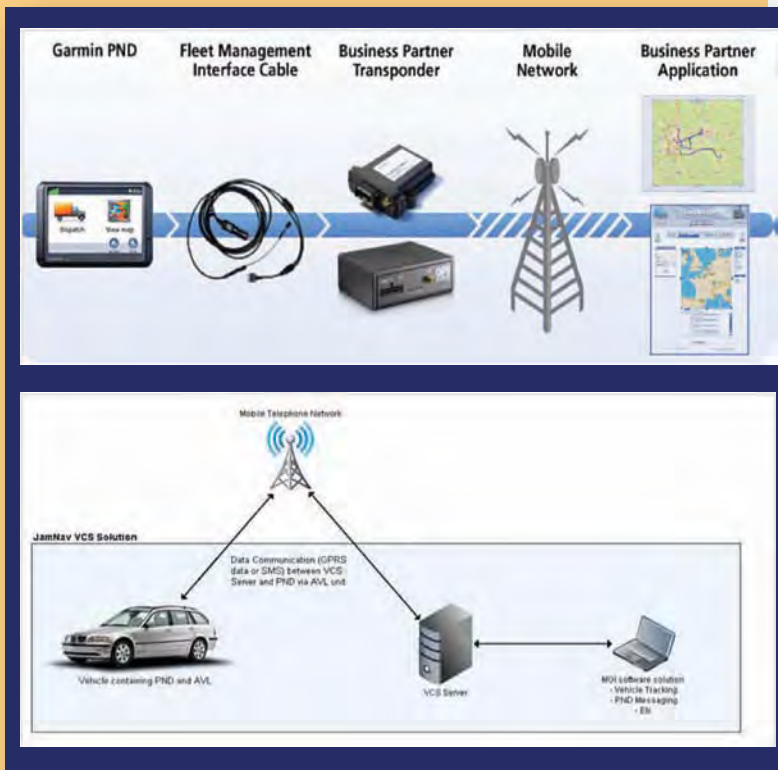
## JAMNAV - VCS

Mona Geoinformatics Institute (MGI) will soon release another cutting edge solution for the business sector, derived from its pioneering and successful JAMNAV GPS navigational product.

The merger of the GPS navigation and GPS tracking platforms has created JAMNAV-VCS (vehicle concierge service) which adds the interactive link that has been missing from conventional fleet management and tracking systems in the island.

MGI in partnership with security giant Hawkeye Electronic Security Limited, are preparing to launch this product in response to the needs of the fleet management market. There is confirmed interest in the product from leading private security courier, logistics and emergency response companies as well as national security interests.

Fleet managers will have full control of their systems, managing dispatch, routing and communication with their vehicles via web-based portal.



### Road Safety Initiative

MGI is currently mapping more than 70,000 road accidents across Jamaica, dating back to the 1930s. In keeping with an evidence-based approach to solving problems, MGI has used GIS to evaluate spatial trends and accident patterns. These analyses have so far identified Jamaica’s most dangerous roadways. This information is valuable to the National Road Safety Council (NRSC) and insurance companies alike.

MGI has also examined the correlation between road crashes and socio-demographic and economic activities within communities, with the objective of providing solutions for the increasing number of road accidents.

It is hoped that these analyses will raise awareness of the need to implement effective measures to reduce the vulnerability of road users. Plans are also underway to set up a subsidiary of MGI, which will focus on mapping and analysing road accidents and accordingly promote road safety.

## Natural Hazards Atlas

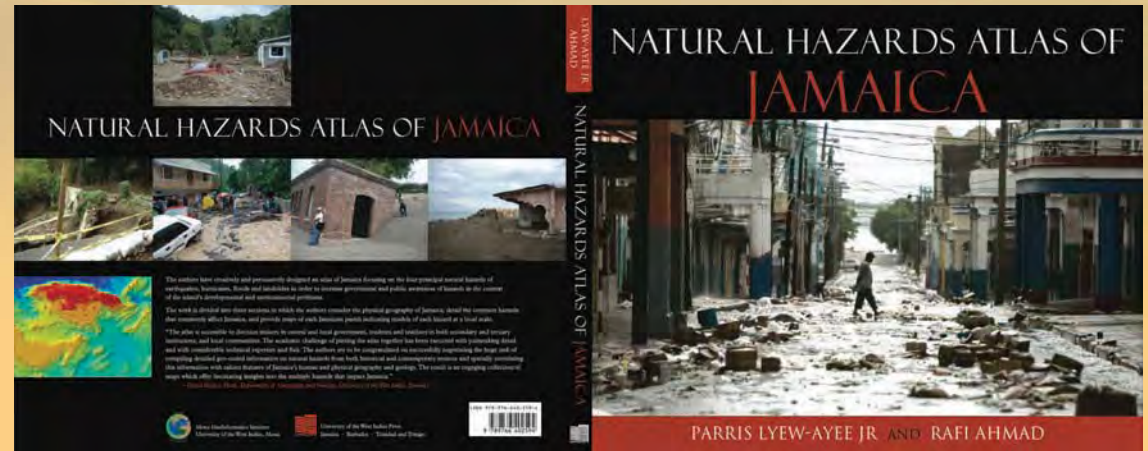
The Mona Geoinformatics Institute and the Unit for Disaster Studies (UDS), have created an extensive hazards database containing geo-physical base data, modelled hazards and derived data, field-collected data and archived information.

These data, along with complementary information from sources, such as Mines and Geology Division, Water Resources Authority and the National Environment and Planning Agency are showcased in this Natural Hazards Atlas.

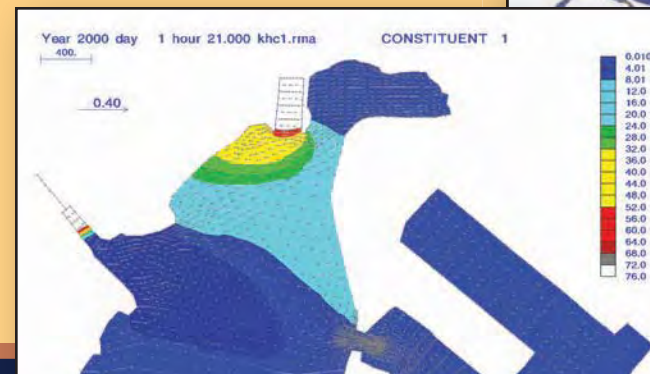
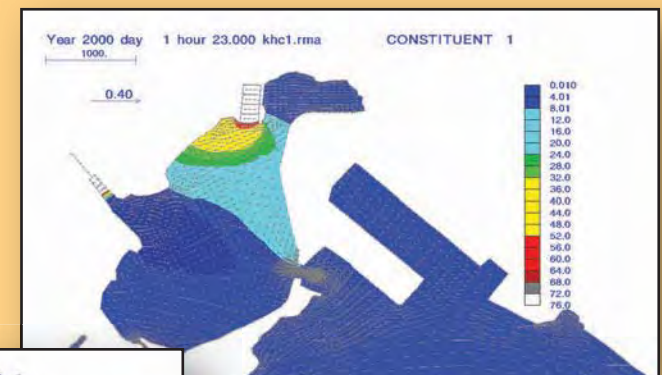
The Atlas presents existing research and information on hazards in Jamaica, in a jargon-free, easy-to-use manner for the general public. The three-part Atlas published by The UWI Press, details the physical geography of Jamaica; earthquake, hurricane, flood, and landslide hazards that commonly affect the Island; and also showcases parish hazard maps and summaries.

## Oil Spill and Invasive Dynamics

Jamaica's main ports in Kingston and Montego Bay are the focus of a study using numerical modelling techniques to simulate coastal processes and their effect on environmentally challenging scenarios such as dispersion of invasive species and oil spills. The results will enable scientists to improve predictions about the environment, better informing mitigation strategies for reducing vulnerability.



Circulation modeling applications being developed by Dr. Ava Maxam, with potential application in oil spill modeling and water pollution - showing sediment distribution from rivers flowing into Hunt's Bay and current vectors depicting circulation.



## Classification of Fish Sanctuaries Across Jamaica

The Mona Geoinformatics Institute is supporting the Fisheries Division in the Ministry of Agriculture, by creating an ecological baseline for fish sanctuaries. Using remotely sensed satellite imagery derivatives, signatures for identifying crucial marine fish habitats such as mangroves, sea grass and coral reefs, will be developed. Through these signatures, the extent and health of each habitat in existing sanctuaries will be determined. This classification will better inform the Ministry on developing policies for improving the effectiveness of sanctuaries in protecting the Island's vital marine resources.

## Disaster Simulation Software

An Emergency Response Planning (ERP) Disaster Simulation Software (DSS) system has been developed by the Mona Geoinformatics Institute for the Jamaica Social Investment Fund (JSIF) as a hazard evaluator tool.

The application functions as an interactive natural hazards system for Jamaica with the primary goal being to motivate the public into action in implementing preventative measures for securing life and property against the damaging effects of natural hazards. This is done by linking a hazards interactive map with a game-based hazards simulator, visualizing the effects of hazards in a manner that is realistic and interactive.



Dr. Marcia Roye, lecturer in Biotechnology, recipient of the L'Oréal-UNESCO Special Fellowship for following "In the Footsteps of Marie Curie". The award was accompanied by a personal grant of 30,000 Euro, and was presented to Dr. Roye on March 2, 2011 at the International Fellowship Ceremony, during For Women in Science Week in Paris, France.

Recipients of Awards at the Annual Research Day Ceremony, January 28, 2011



# Challenges in Higher Education



## Competitive Environment

When an economy is shrinking, enrolment in tertiary level institutions rises as persons seek to pursue new careers, acquire knowledge and upgrade their skills to prepare them for better job opportunities.

The Planning Institute of Jamaica (PIOJ) has indicated that the demand for tertiary education in Jamaica grew by 40% between 2005 and 2010 moving from just below 49,000 to more than 68,000 in five years.

This is a promising trend and indicates how well citizens understand that tertiary education is vital to their personal success and the country's competitiveness and eventual economic growth. But in acquiring tertiary education affordability is a critical component.

Any expectation that this increase would have been mirrored in our enrolment has been tempered by reality. Competition to fill the growing demand for tertiary education has become fierce in recent times. Aided by technology, many private overseas institutions are extending the virtual borders of their campuses by establishing teaching and research platforms for potential students anywhere they are in the world. We have witnessed many of them sprouting in the Jamaican marketplace.

## Reduced Budgetary Support

Faced with the dire global economic situation, governments worldwide have sought to reduce budgetary support for tertiary level education institutions, as one way to mitigate the crisis. The situation has been no different for Jamaica. At present, the national budget of Jamaica is also greatly influenced by the demands of an International Monetary Fund (IMF) programme and more importantly, a shift in attitude away from support for tertiary level studies, in favour of early childhood, primary and secondary levels education, and vocational training.

## Mona's Response to Challenges

Responses to these economic challenges by public institutions across the developed world range from capping enrolment by closing applications several months early, to scrapping academic programmes, laying off Faculty and scaling down administrative functions.

It is heartening that The UWI, Mona Campus has avoided taking drastic belt-tightening measures chiefly because we usually come back to this question: What is our core mission?

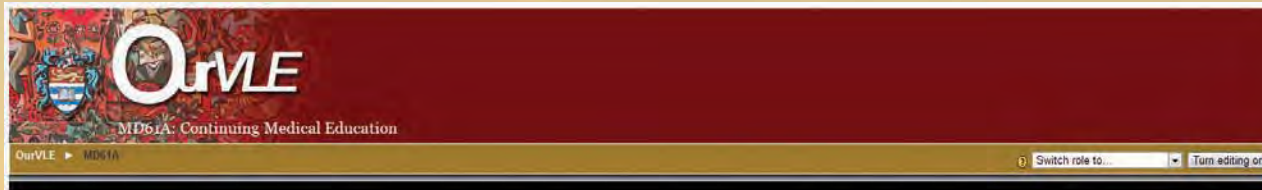
At the heart of this university is its academic energy which leads to knowledge creation, knowledge development and knowledge transfer. As the Region's leading institution of higher learning, we deem it critical that we continue to create new opportunities to strengthen our competitiveness and to support our students' academic pursuits.

Mona's response to the challenging environment therefore, includes commencing the processes for accreditation with the University Council of Jamaica, to formalise and strengthen the quality assurance mechanisms that the UWI has developed over the years, as well as to counter the general trend of universities operating in the English-speaking Caribbean using accreditation as a cachet in an increasingly competitive higher education environment.



In the absence of a viable regional accrediting body, Mona has sought accreditation from the University Council of Jamaica (UCJ); St. Augustine from the Accrediting Council of Trinidad & Tobago; and Cave Hill and the Open Campus from the Barbados Accreditation Council, with all three Councils agreeing to grant reciprocal recognition to institutions accredited by them.

Further, the Mona School of Business (MSB) has received accreditation from the International Association of MBA's (AMBA) for achieving what the AMBA has described as the highest standard in post-graduate Business Education for its EMBA & MBA programmes. AMBAs accreditation is only accorded to Business Schools with the "best programmes", and is internationally recognised as the global standard for all MBA, MBM and DBA programmes.



Other initiatives aimed at strengthening our competitiveness in these challenging times include:

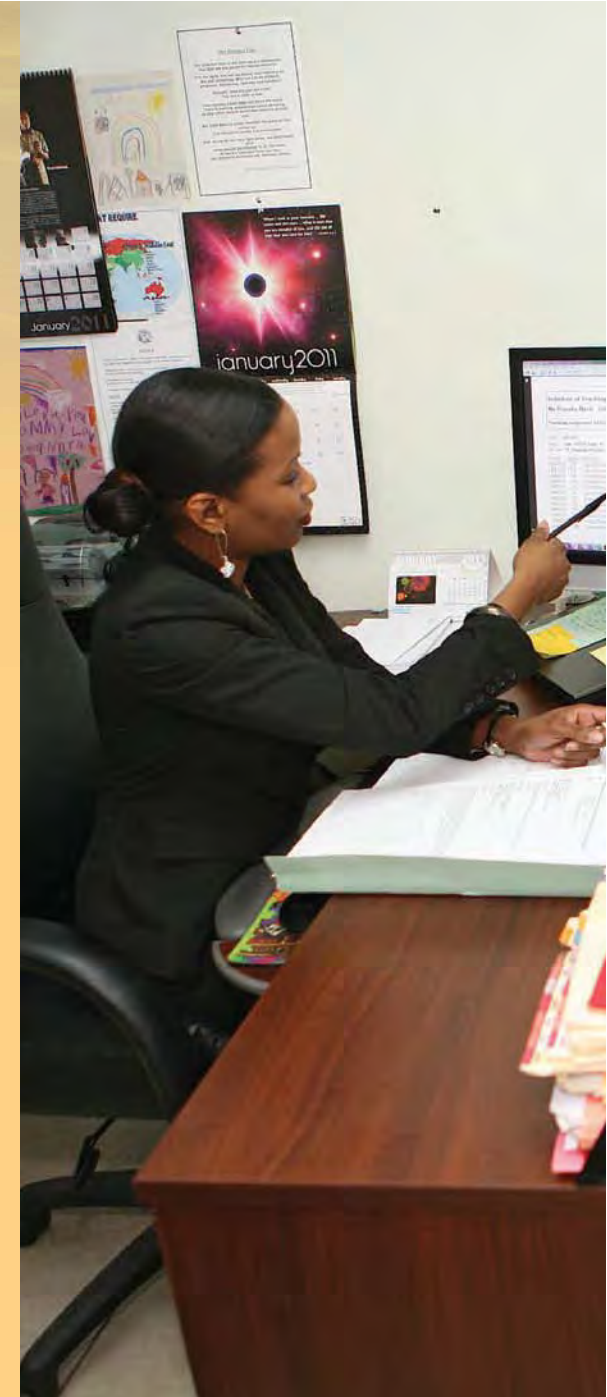
- Ensuring active communication with potential students providing them with on-going, relevant information to aid their decision.
- Streamlining the admission process to reduce turnaround time between application, offer and acceptance and ultimately registration.
- Settling Faculty course schedule before the start of the school year so that students in general, and working students in particular, can plan ahead, including requesting time-off from work.
- Optimizing the use of fulltime faculty to ensure students are exposed to the best academic expertise at Mona while reducing the need for adjunct staff.
- Engaging flexible delivery modes to improve access and respond to market needs.
- Using technology to address the limitations of the physical plant.

More than 1,500 courses are now offered online in OurVLE - the Campus' virtual learning environment - with as many as 5,519 campus users accessing these courses in 2010/2011. OurVLE now facilitates a total of 35,222 users including academic and administrative staff and students from across the Caribbean.

Video conferencing technology now connects multiple locations during lectures. This facilitates, for example, simultaneous delivery to students at Mona and the Western Jamaica Campus, with two-way interaction.

Initiatives to help our students deal with financial challenges include:

- Expanding scholarship and other financial support programmes.
- Increasing employment opportunities for students working as library assistants and security/courtesy officers at various campus locations; and boosting peer-to-peer learning centres with earning opportunities for 250 students.
- Creating outsourcing jobs with significant employment potential at the newly constructed 1,000 seat call centre.
- Reorganizing Radio Mona to offer students opportunities to earn while they learn.
- Introducing payment plan facilities for financially challenged students and also providing them with information on the Student Loan process.
- Relaxing the criteria for deregistration so that this becomes a last resort.



# Tools of Transformation



## Administrative Processes

A key focus of the Mona Campus during 2010/2011 was the streamlining of academic and administrative processes started in the previous two academic years. We successfully completed efforts, using course data, to accurately quantify our academic staffing needs, define payroll, and provide detailed work schedule for academic staff. The result is a more efficient and effective utilisation of fixed staff capacity.

The Campus has also successfully automated the selection process for student applications by programming decision criteria, making it possible to respond to applicants within a week.

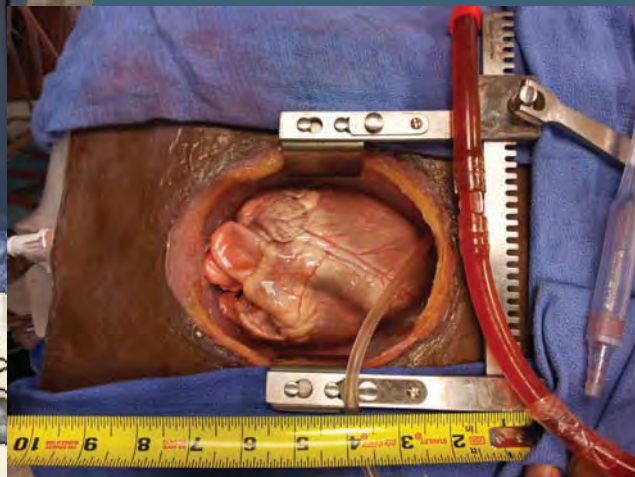
The strategy of earlier and continuous communication with selected applicants makes it possible to confirm financing arrangements before the start of the school year. This has resulted in a 15% increase in early registration for 2011/2012 and earlier receipt of funds, which positively impacts the Campus' cash-flow.

Upgrading of the Campus' TMA Computerised Maintenance Management System (CMMS) in 2009/2010 has resulted in significant improvement to the scope and accuracy of the information database. TMA records were used in campus-wide initiatives such as central timetabling and mapping of teaching areas.

## Sustainable Financing Initiatives

The Mona Campus has embraced a dual approach towards ensuring financial viability and sustainability. It involves reducing/containing costs across various cost centres and engaging creative strategies for revenue generation.

Continuing initiatives commenced in previous years, the Mona Campus persisted with efforts to identify areas for cost reduction and recovery, including electricity, water and sewage charges for non-campus entities and residences. Particular focus has been placed on reducing energy cost generally, with some promising options being explored.



### Business Development Office

The Business Development Office (BDO) continues to play a key role in developing/increasing the Campus' revenue streams. During the year various projects were successfully pursued in collaboration with Mona GIS, the Biotechnology Centre and other departments in the Faculty of Pure and Applied Sciences. The BDO earned US\$520,000 for leasehold arrangements during the 2010/2011 academic year and anticipates greater earnings from projects which are now being developed.

### US Patent Secured

The approval of a US Patent for the Cardiac Surgery Simulator has taken the Mona Campus a step closer to prominence in the field of medical innovation. This development strengthens the intellectual value of the innovation and represents a valuable asset for the Mona Campus. Among the institutions that are already using this innovation, in a pilot study to measure the effectiveness of simulation in cardiac surgery training, are the University of North Carolina; Johns Hopkins University; Massachusetts General Hospital; University of Rochester; Vanderbilt University; The Mayo Clinic; The University of Washington and Stanford University.

### Microbiology/Pathology Lab

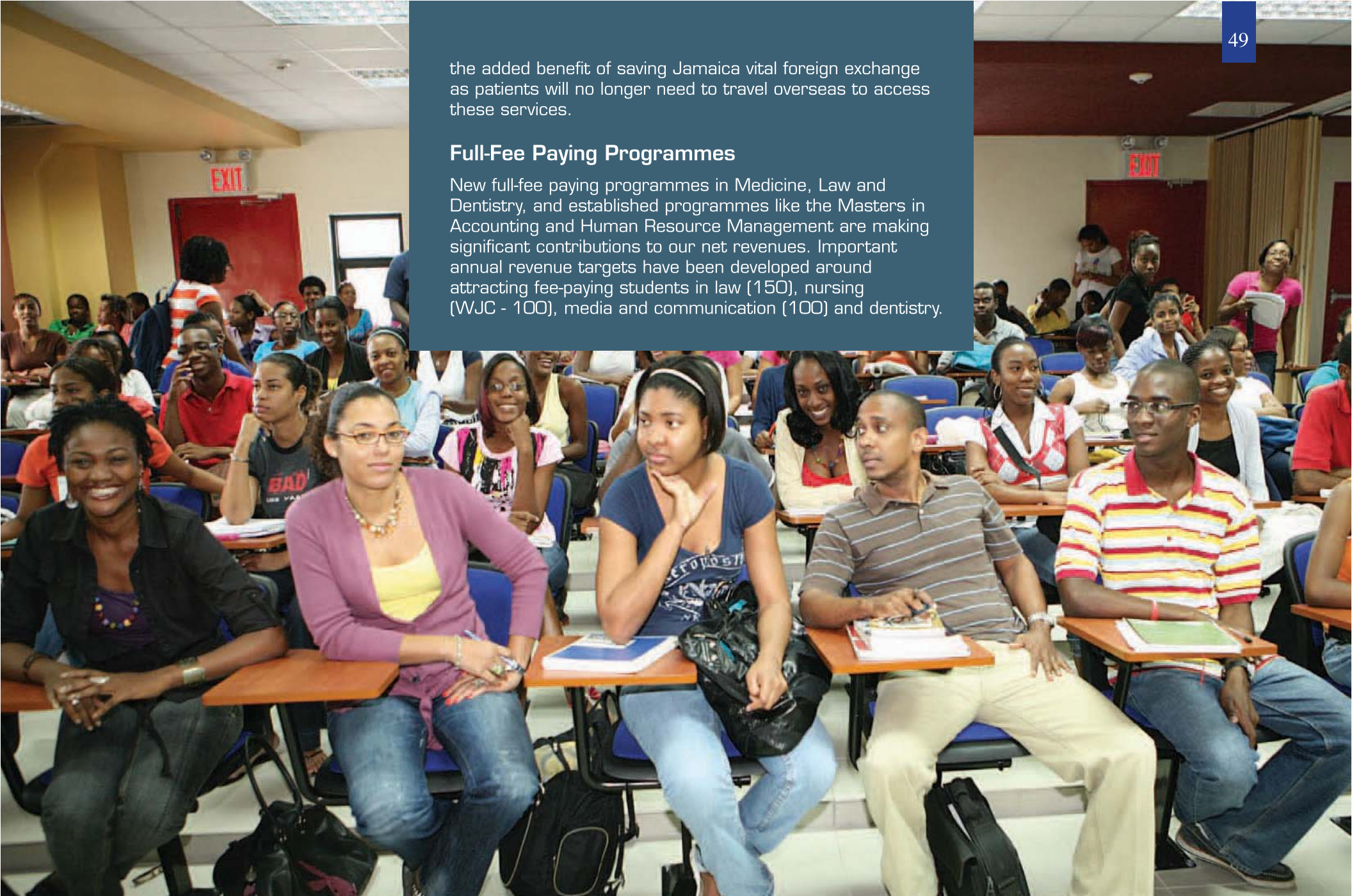
The Department of Pathology opened its new Cytogenetics laboratory in July 2011. Financed by the CHASE Fund to the tune of \$20 million, the laboratory is the only one of its kind in the English-speaking Caribbean. The facility will allow for the identification of disease-causing chromosomal abnormalities in a wide range of conditions, including but not limited to: children with developmental abnormalities, mental disorders, congenital anomalies (including congenital heart disease), some seizure disorders, adults with infertility and women with recurrent miscarriages. Chromosomal abnormalities are also responsible for various cancers, and characteristic recurrent abnormalities seen in some leukaemias, lymphomas and soft tissue sarcomas.

The laboratory is expected to be an important revenue stream for the Campus, and will have

the added benefit of saving Jamaica vital foreign exchange as patients will no longer need to travel overseas to access these services.

### Full-Fee Paying Programmes

New full-fee paying programmes in Medicine, Law and Dentistry, and established programmes like the Masters in Accounting and Human Resource Management are making significant contributions to our net revenues. Important annual revenue targets have been developed around attracting fee-paying students in law (150), nursing (WJC - 100), media and communication (100) and dentistry.



## Establishment of E-Services Park

The soon to be completed 48,000 square feet E-Services facility has significant potential to positively impact efforts to create a sustainable economy in and around the campus. Equipped with more than 1,000 workstations and an expected 24-hours-a-day, round-the-clock operation, the E-Services Park will provide employment opportunities for a significant proportion of the Campus' student population, thereby allowing bankable fee payment arrangements to be made with financially challenged students. The facility will be configured to suit the needs of a wide cross-section of clientele.

The Campus continues to pursue development of income streams in other areas by growing the international student population, exploring opportunities in sports, expanding student housing stock and commercialising various campus assets, professional expertise and services.

Efforts continue apace to advance development of the UWI, Mona Athletics Stadium around the UWI/Usain Bolt Track; partnering with the Government of Jamaica to develop the University Hospital of the West Indies into a private/public health service delivery model; and redeveloping the St. Elizabeth-based ELIM into a self-supporting school of Agriculture.



# Powerful Partnerships



NEPA and UWI signs MOU

## Building New Alliances

In 2010/2011, the UWI, Mona Campus and the National Environment and Planning Agency (NEPA) signed an MOU aimed at fostering greater collaboration between both institutions. The MOU seeks to have Mona target much of its extensive research on the environment, along with its human and physical resources in support of the effective fulfilment of NEPA's mandate to manage Jamaica's environment while facilitating sustainable development.

Among the areas covered under the MOU are the management of natural resources, including economic valuation; biodiversity, including genetic resources; ecosystems: terrestrial, freshwater, coastal and marine; ecosystem classification & profiling; protected areas; environmental models and simulations; policy and action plan development; ecological assessments; pollution assessment; hazard mapping and GIS; and data management within the UWI research agenda.



## Collaboration with China

Under an agreement with the Government of Jamaica and the Ministry of Education, China, UWI, Mona hosted four Chinese students between May 31 and July 1, 2011. They were given full scholarships to pursue the programme – English for Speakers of Other Languages. The class also included a full fee-paying Colombian student. Based on the positive evaluation from the participants we intend to expand this programme in the summer of 2011.

## UWI/JBDC Business Advisory Services Centre

On January 26, 2011, the UWI/JBDC Business Advisory Services Centre officially opened its doors on the Mona Campus. The partnership seeks to draw on the expertise of the Jamaica Business Development Centre (JBDC) to help transform business plans and ideas generated through entrepreneurship programmes at Mona, into business ventures.

The Centre provides a full suite of services including business advising and consultancy, market research and guidance, export information services, business plan assessment, loan proposal and financial statements preparation. The Centre is also overseeing the development of an ideas/knowledge data bank, the E-Biz Ideas Bank, which will facilitate the brokering of business ideas between potential entrepreneurs and investors.



## 3-M Library Security System Launched

The Main Library officially commissioned into use its new state-of-the-art 3M Library Security System on January 18, 2011. Acquired under an MOU between 3M Inter-America Inc. (Jamaica Division), the UWI Development and Endowment Fund UWIDEF, and UWI, Mona Campus, the system offers improved security for the Main Library's significant collection and paves the way for the introduction of self-check machines, which will help to transform the Library's operations.

Under the MOU, 3M gave a 30% discount on the price of the System and awarded the 3M/Kenneth Ingram/



UWIDEF scholarship valued at \$720,000 over three (3) years, tenable at the Department of Library and Information Studies. Through its local agent, TELICON Group, 3M also provided technical oversight for the installation and testing of the system, while Mona completed the infrastructure works to facilitate installation.

### **MOU between UWI and Inter-American Development Bank (IDB).**

The MOU signed between the UWI and Inter-American Development Bank (IDB) will see the Government of Japan, through the IDB providing US\$500,000 to fund a comprehensive study of child health and disease in Jamaica. Support JAKids; Jamaica Child Cohort study to be led by Professor Maureen Samms-Vaughn.

### **Botswana Delegation**

In January 2011, a delegation from the Botswana Embassy in Washington DC visited the UWI, Mona Campus. While discussions with Campus representatives centred on the welfare of the 54 Botswana students studying at Mona, the meeting also explored the possibility of expanding collaboration between the UWI and the Government of Botswana to include training of doctors at the graduate level.

That visit was quickly followed by a two-day tour of the Campus in February by a delegation from Botswana's Ministry of Education.



## Collaboration with University of New England

The University of New England (UNE) has made a proposal to the Department of Life Sciences for collaborative research in the area of terrestrial plant life. Following a presentation by the head of the International Students Office (ISO) to the Association for International Education Conference held in Kansas City, Missouri, in July 2010, UNE representatives approached the ISO and sought a meeting with faculty doing research in Marine and Environmental Sciences. In furtherance of this initial contact, a UNE representative visited the Mona Campus and held discussions with Professor Dale Webber, Head, Centre for Marine Sciences.

## University Visits

In its quest to build partnerships, collaborating on research, engaging in student and Faculty exchange, and developing opportunities to benchmark against best practices, the UWI, Mona Campus hosted delegations from the following universities during the academic year 2010/2011:

- University of Richmond, Virginia, USA
- Grand Valley State University, Michigan, USA
- North Carolina Central University, USA
- University of Vermont, USA
- Dokkyo University, Japan



## The Confucius Institute

In January 2011, His Excellency Chen Jinghua, Ambassador of the People's Republic of China to Jamaica, donated some 3,000 books and 200 DVDs to Mona, on behalf of the Chinese Language Council International (Hanban), Beijing. The collection which included teaching materials and literature boosted the resources of the recently established Confucius Institute. The Institute, the result of a partnership between the UWI, Mona Campus and Taiyuan University of Technology, China, seeks to deepen educational cooperation between China and Jamaica.



## Visit by the President of Colombia

On Friday, November 19, 2010, the Hon. Dr. Juan Manuel Santos Calderon, President of Colombia, visited the UWI, Mona Campus while on an official visit to Jamaica. President Calderon gave a public address on the topic: "Latin America and the Caribbean in the Next Decade" to a campus audience.

The UWI, Mona Campus has a fruitful relationship with universities in Colombia including an annual student/faculty exchange programme.



## Alumni

The Office of the Principal continues to play a vital role in liaising with the alumni community. Its mandate is to devise creative ways to ensure that more alumni are connected with Mona's social and academic life, and with each other.

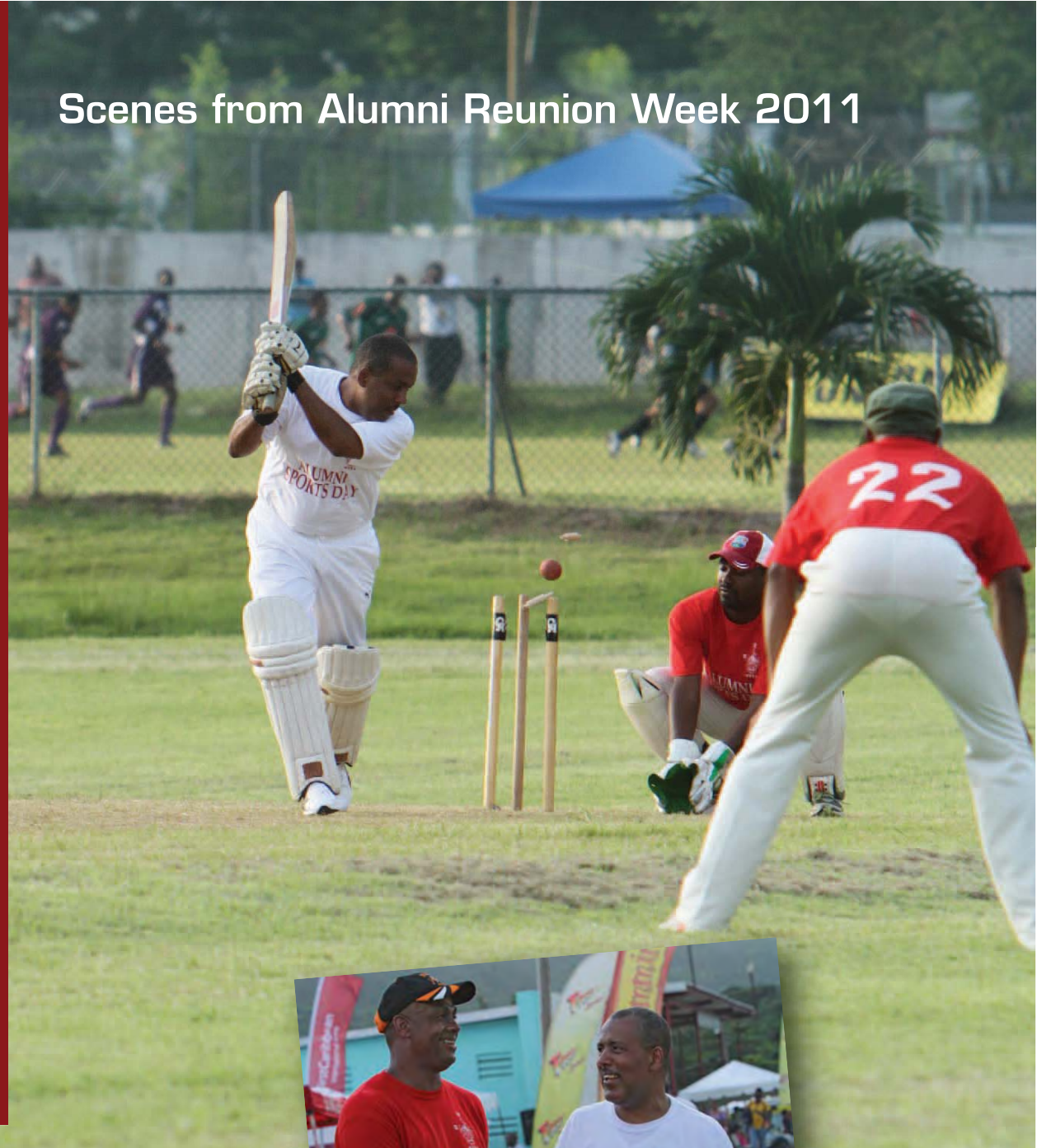
Understanding that communication is essential to keep alumni informed and stimulated the Office of the Principal developed an exclusive on-line community of UWI graduates via a quarterly newsletter branded Mona e-Connections.

When it was launched in 2010 there were fewer than 4,000 readers. Now as the newsletter continues to foster strong alumni interaction with its compelling content and interesting news, the readership has grown to more than 18,000.

Fresh in our minds is the festive week in August dedicated to the alumni community which was dubbed, "Through the Decades, Alumni Reunion Week 2011." Scores of alumni who have savoured the rich and rewarding experience of UWI returned to Mona to celebrate in a variety of ways thereby strengthening the bonds with their alma mater.

The alumni celebrated with Roy Bailey who was recognised as the first graduate of the then University College of the West Indies (UCWI), Mona. We hope to sustain the momentum experienced during Reunion Week throughout the year.

## Scenes from Alumni Reunion Week 2011





# Dynamic Community Engagement

## Building, Strengthening Capacity in Surrounding Communities

Following the devastating earthquake in Haiti on January 12, 2010, the UWI, Mona reached out to its neighbours by:

- offering scholarships to 25 students;
- dispatching medical doctors to assist in
- caring for the injured; and
- offering a four-month training programme to a staff member of the national archives and library.

In September 2010, Mona welcomed 25 final year students from the Universite Etat d'Haiti (State University of Haiti) in the first ever such exercise to be undertaken by an Anglophone Caribbean University.

A team led by Dr. Matthew Smith, Lecturer in the Department of History and Coordinator of the Mona-Haiti Initiative, visited Haiti to conduct interviews, assess students' English Language abilities as well as their preparedness for relocation.

Enjoying full scholarships that covered tuition, accommodation, meals, books and a weekly stipend,



the students were registered in the Faculties of Humanities and Education, Social Sciences and Pure and Applied Sciences. The scholarships were partly funded by the Open Society Institution of New York and the Caribbean Development Bank.

The International Students Office assisted the students in improving their command of the English Language through the delivery of a special "English as a Second Language" programme from September 2010 to April 2011.

The students integrated well into campus life and Jamaica. They participated in extra-curricular activities and hosted a "Haiti

Day" in November 2010 with the support of the Department of History and Archaeology. Field trips were also organised by the ISO and OSSD.

After a successful academic year, the students returned to Haiti having been presented with formal certificates of participation. On their return to Haiti they were required to complete a dissertation before being awarded their degrees. All but three of the students have now received their degrees.

The International Students Office (ISO) conducted a survey of the students to obtain their assessment of the programmes and a majority indicated that learning in English was difficult.

Lecturers were impressed by the academic ability of the students and their capacity to assimilate and organise their coursework material. It has been a learning experience on both sides and the survey pointed to a great need for higher degrees. This, we view, as a potential area for future collaboration between the UWI and Haiti.



## Greater August Town Project

Bittersweet emotions best describe the past academic year for the Mona Social Services UWI Township Project in Greater August Town (GAT).

We faced the challenge of the passing of Professor Emeritus Barry Chevannes who initiated the Project which aims to foster the integration of the community of GAT and the Mona Campus.

We embarked on a mission to celebrate the life and continue the work of Professor Chevannes using his six-pillar approach to community development: education, skills training, entrepreneurship, crime and violence reduction, health, sports and culture.

In December 2010, GAT and the UWI honoured the life and work of the late Professor with the unveiling of his portrait at Bryce Hill Plaza, August Town and a tree-lighting ceremony, ushering in the Christmas season. More than 300 residents turned out to hear the University Singers belt out Christmas carols. Throughout the year, communities in the GAT honoured his memory with special events.

It was during this time too, that 25 parents completed a one-day parenting seminar hosted by the Office of the Principal. They received certificates of participation. Meanwhile five students received scholarships to pursue tertiary studies at the UWI under the UWI Challenge Scholarship Programme.

Mrs. Pauletta Chevannes and Professor Gordon Shirley at the tree-lighting ceremony in honour of the life and work of the late Professor Barry Chevannes.



## Collaboration with the Jamaica National Foundation

The UWI Township Project in collaboration with the Jamaica National Building Society Foundation officially took over operations of the UWI Mona SOURCE at Bryce Hill Plaza, in June 2011. The SOURCE provides residents with easy access to modern state-of-the-art services such as an Internet café, printing and photocopying, conference/meeting room rental.

Additionally, the Barry Chevannes Fathers Inc. Resource Centre was officially opened in August Town on August 9, 2011, in a ceremony hosted by the Office of the Principal, UWI, Mona. The centre is home to the Fathers' Inc. support group founded by Professor Chevannes and provides counselling, research and access to materials on fathering, male health and relationships. This initiative advances Mona's efforts to foster the sustainable development of the community.



Official opening of the Barry Chevannes Fathers Inc. Resource Centre



Dr. Maurice McNaughton demonstrates the features of a laptop to children from the Providence Basic School

## One laptop per child

Another objective of the GAT Project, to make students computer literate, was advanced through the handing over of 25 laptops to Mr. Morlton Wilson, Principal of August Town Primary School, under the One Laptop per Child Project.

## Supporting National Imperatives

Throughout the year, UWI Mona had the honour of hosting several conferences, symposia, and fora. In addition to stimulating intellectual discourse, these engagements sought to bring into focus and make critical recommendations on challenging issues of local, national and global importance.

### Visit of Toronto Police Chief

Mr. William Blair, Chief of the Toronto Police Service paid a four-day visit to Jamaica in November 2010. The visit was organised by UWI, Mona in collaboration with the Police Services Commission in order to facilitate interaction between international crime management experts and key stakeholders involved in the ongoing transformation of the Jamaica Constabulary Force.



### The Slashroots Developers' Conference

The Mona School of Business hosted the inaugural Slashroots Developers' Conference in February 2011. The Conference was designed to foster the development of local technological innovations and to provide an environment to support dialogue among stakeholders of innovations, particularly amongst policy makers, members of the technology community and the public and private sectors.

The Conference highlight was a 24-hour national software developer competition dubbed "OpenData Camp", where three-member teams of developers used a 24-hour window to build value-added applications and visualizations. These were used to demonstrate the possibilities that can arise from



increased data access, as well as to showcase the programming skills of local software developers. Two on-going technology development projects featured from the UWI were the Agriculture OpenData Initiative and the Jamaica One Laptop per Child Project.

Dr. Olivene Burke, Project Coordinator, UWI Township, presenting an XO (laptop) to the principal of August Primary, Mr. Morlton Wilson

## The UWI/World Bank Seminar on Jamaica's Economy

On June 17, 2011, the UWI, Mona Campus in collaboration with the World Bank hosted a dissemination seminar titled, Jamaica: Country Economic Memorandum (CEM) "Unlocking Growth". World Bank Senior Economist Zafer Mustafaoglu delivered the main address on the Country Economic Memorandum (CEM), which assesses and makes recommendations on the chief economic and social factors that have challenged growth in the Jamaican economy.

## Organizational Renewal: From Recession to Recovery and Growth

In June 2011, the Mona School of Business hosted a Roundtable titled, "Organizational Renewal: From Recession to Recovery and Growth". The forum engaged senior executives from the private and public sectors in dialogue on organizational renewal, with the aim of finding practical solutions to the economic challenges facing some organizations.

International experts Allan Tilly of Turnaround Management Association International and Paul Casey of Deloitte, Toronto, addressed the topics: "Global Trends in Restructuring" and "Strategic Cost Management", respectively. Local contributors included the Hon. Lascelles Chin of the Lasco Group, Mr. Christopher Levy, President, Jamaica Broilers Group; Mrs. A. Cecile Watson, Managing Director, National Housing Trust and Mrs. Marlene Street-Forrest, General Manager, Jamaica Stock Exchange.



## World Telecommunication and Information Society Conference

In May 2011, the Mona Campus hosted a World Telecommunication and Information Society Day: ICT Policy Conference, through its Telecommunications Policy and Management (TPM) Programme. The event marked International Telecommunications and ICT Day and brought together policy makers, regulators, academics and practitioners in the field of Information and Communications Technology to discuss ICT related issues and strategies. The resulting recommendations focused on practical, innovative approaches and best practices for ICT policy making and regulation in the Caribbean.



Professor Hopeton Dunn, Director of the TPM Programme, Mona School of Business, UWI addresses the gathering at the World Telecommunication and Information Society Day Conference



Mr. Hallam Hope, President of CARITEL, Barbados, makes a point at the TPM ICT Policy Conference hosted by TPM in May 2011.



Former Opposition spokesperson on Energy and Technology, Mr. Phillip Paulwell (right) responds to a comment during a session of the World Telecommunication and Information Society Day Conference. Others are (L-R): Dr. Elaine Wallace, UTECH, Mrs. Michele Thomas, TPM, MSB and Mr. Cordel Green, Broadcasting Commission.

## Popular Music Symposium

“The Social Impact of Jamaican Popular Music” was the theme of a symposium hosted by the Institute of Caribbean Studies on Saturday, February 2011. The Symposium explored topical issues in the Jamaican music landscape, including the impact of music on adolescent sexuality; music and violence; and the implications of dancehall lyrics on Caribbean youth. It was designed to encourage dialogue among researchers, music stakeholders and the public on critical issues in Jamaican popular music.

## Child Rights Workshop for Primary School

In May 2011 the Sir Arthur Lewis Institute for Social and Economic Studies partnered with key local and international organisations to organise a Child Rights Workshop for Primary School. The Workshop sought to train teachers from 50 primary schools in child rights and research methodologies and to promote research among primary school students and increase adherence to child rights in schools. Some 180 primary school representatives from across the Island attended the workshop.

Partners included the United Nations Children’s Fund (UNICEF), the Environmental Foundation of Jamaica (EFJ), the Caribbean Child Development Centre (CCDC), UWI, the Early Childhood Commission (ECC), the Planning Institute of Jamaica (PIOJ), Office of the Children’s Advocate (OCA), Office of the Children’s Registry (OCR), the Jamaica Coalition on the Rights of the Child (JCRC), the Child Development Agency (CDA), and the Ministry of Education.

## MSB / IIA Host Symposium on Corporate Governance

The Mona School of Business in collaboration with the Institute of Internal Auditors (IIA) hosted a symposium on “Corporate Governance” in May 2011.

The distinguished panel included Mr. David Hall, President of the Institute of Internal Auditors; Ms. Margaret Campbell, Corporate Governance Committee, Institute of Chartered Accountants of Jamaica; Ms. Greta Bogues, Corporate Governance Committee, Private Sector Organization of Jamaica; Ms. Pamela Munroe-Ellis, Auditor General; Mr. Kevin Mayeaux, Senior Vice President & Chief Officer for the Institute of Internal Auditors - North American Operations Representative; and Dr. Lawrence Nicholson, Lecturer at the Mona School of Business.

## UWI Hosts Symposium on the Tivoli Gardens Incursion

“The Tivoli Incursion-1 Year Later” was the topic of a one-day symposium organised by the Institute of Gender and Development Studies in collaboration with NGOs, Jamaicans for Justice, Sistren Theatre Collective and the Jamaica Civil Society Coalition.

# Celebrating Excellence

Faculty members, diverse in interests and specialties, are the heart and soul of our institution. Their various concentrations have spawned ground-breaking research and scholarship.

Among those recognised for outstanding work in their respective fields were:

**Professor Maureen Samms-Vaughan**, Department of Obstetrics, Gynaecology and Child Health, on receiving the prestigious 2010 Vice Chancellor's Award for Excellence for contribution to Public Service. The award was presented at a special ceremony on October 21, 2010 at the UWI, Cave Hill Campus;



**Professor Terrence Forrester**, Tropical Medicine Research Institute, who received the Institute of Jamaica's Golden Musgrave Medal for contribution to Science. Professor Forrester's work in the area of hypertension research is significant in the Caribbean context, given the region's prevalence of hypertension and high death rate from heart disease;



**Professor Wayne McLaughlin**, Department of Basic Medical Sciences, received the Gleaner's Honour Award for Science and Technology, for producing scientific research results that have positively impacted agricultural production in Jamaica and the Caribbean;



**Professor Everard Barton**, Department of Medicine, received the First Caribbean Bank's Unsung Heroes Award for Medical and Community Service. Professor Barton established clinics in Mandeville and St. Ann's Bay, providing relief and free treatment to more than 300 persons in these communities over the past seven years;



**Ms. Camille Daley**, Department of Sociology, Psychology and Social, received the First Caribbean Unsung Heroes Award, for her work with persons with sickle cell disease. Ms. Daley is co-founder and director of the Sickle Cell Support Club of Jamaica which provides social and emotional support to persons with sickle cell disease and has helped thousands to manage their illness and lead fairly normal lives;



**Dr. Eris Schoburgh**, Lecturer in the Department of Government and Coordinator of the Public Sector Management Unit was elected to the Board of the Commonwealth Local Government Forum (CLGF), at its recent conference in Wales. Dr. Schoburgh will serve for a two-year period from 2011-2013.



**Mrs. Beverley Lashley**, Head, UWI Mona Science Branch Library and Coordinator of the Caribbean Disaster Information Network (CARDIN,) was named Caribbean Information Professional of the Year for 2011 by the Association of Caribbean University Research and Institutional Libraries (ACURIL). The recognition is given to a member of ACURIL who demonstrates individual commitment, excellent performance and outstanding achievement as an information professional.



**Professor Dale Webber** now occupies the James S. Moss-Solomon Chair in Environmental Management.



**Professor Ian Boxill** now holds the Carlton Alexander Chair in Management Studies



# National Honours

National recognition was accorded to current staff and retired members of the UWI, Mona community in the 2011 Independence Day awards.

## Professor Patrick Earle Bryan

was conferred The Order of Distinction in the Rank of Commander (CD) for excellence in academia



## Professor Everard Nathaniel Barton

was conferred The Order of Distinction in the Rank of Officer (OD) for outstanding contribution to medicine (Nephrology) and community service.



## Mrs. Rodina Madeleine Reid

was conferred The Badge of Honour for Meritorious Service (BH) (M) for dedicated service in the field of educational administration.



## Professor Peter Raymond Fletcher

was conferred The Order of Distinction in the Rank of Commander (CD) for contribution to the practice and teaching of medicine



## Professor Barrie K. Hanchard

was conferred The Order of Distinction in the Rank of Commander (CD) for contribution to practice, teaching and research in medicine.



# Honorary Graduands

The UWI proudly conferred honorary doctoral degrees on five prominent Jamaicans including the man who currently holds the title of the world's fastest human, Hon. Usain Bolt.

## The Doctor of Laws Degree:

### Professor Lenworth Jacobs

Professor Lenworth Jacobs received his medical degree from the University of the West Indies. He completed his surgical residency in Boston at the Peter Brigham Hospital and the Boston University Medical Centre. He then received a Master's Degree in Public Health from Harvard University. He is a past president of the American Trauma Society, Governor of the American College of Surgeons, Founder and past President of the Eastern Association for the Surgery of Trauma. Professor Jacobs is also the Founder and National Director of the Advanced Trauma Operative Management (ATOM) course. More than 1200 surgeons have been certified by ATOM across the US, Canada, the Middle East and West Africa.

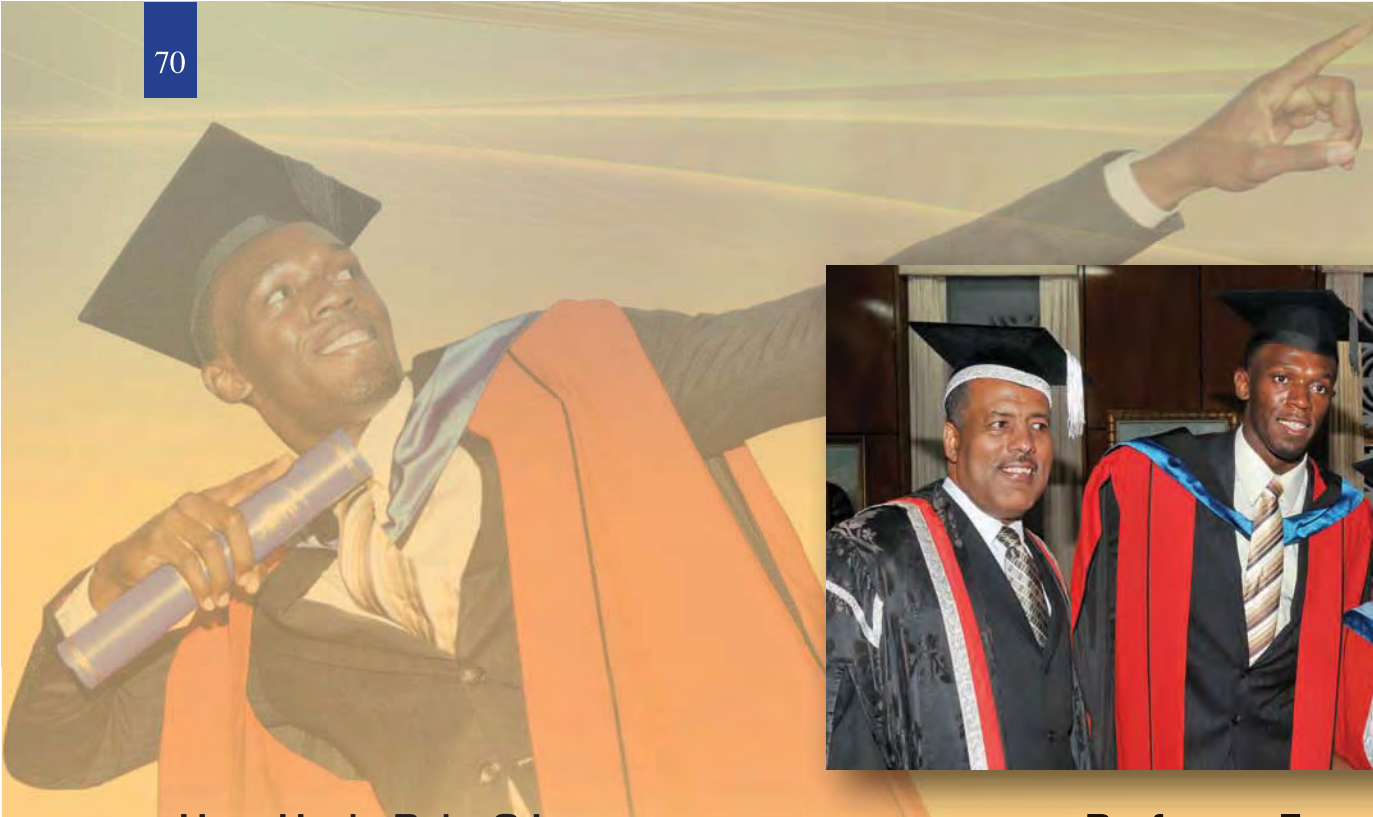
Professor Jacobs has made more than 200 presentations in various fora across the world and he has 180 publications to his credit. He was conferred with the West African College of Surgeons Fellowship in 2007.



### Ms. Minna Israel

A career banker, Ms. Minna Israel has been Country Manager and president of the Royal Bank of Canada since 2008. Before that she filled various senior positions at Scotiabank Jamaica both in Jamaica and the Bahamas.

Her performance and contribution to the wider society has earned her a number of awards including the University of the West Indies Luminary Award as well as the University of Technology's alumni award. She holds a BSc in Management Studies from the University of the West Indies and an MBA from the Richard Ivey School of Business at the University of Western Ontario. She is Chair of the Board of Mona School of Business; a member of the UWI Vice Chancellor Award Selection team; and also serves as a member of the UWI Capital Development task force.



## Hon. Usain Bolt, OJ

The Hon. Usain Bolt is an outstanding Jamaican sportsman known for his amazing performance in athletics. He won three gold medals in 100m, 200m and 4x100 meters events and set new world records at the 2008 Beijing Olympic Games and at the 2009 World Championships. Among his many accolades is his induction in the Society of Order of Jamaica (OJ) (2009) by the Government of Jamaica for distinction in the field of sports. This followed his 2008 recognition when he received the Order of Distinction in the rank of Commander for outstanding service to Jamaica. In 2009 also, he was named Ambassador-at-large.

Additionally, Bolt was voted the International Association of Athletic Federation (IAAF) Male Athlete of the Year (2008/2009) and was one of two Jamaicans named for the 2009 United Nations Educational Scientific and Cultural Organization (UNESCO) Champion for Sports award.

## Professor Erna Brobder

Jamaican author Professor Erna Brobder has used her writings to offer a measure of healing to those with untold stories. Professor Brobder earned her BA from the University of the West Indies while it was still the University College of the West Indies. She immersed herself in academia along the way earning her Masters and DPhil degrees.

The professor tried many other careers before settling on writing and was a member of staff of the Institute for Social and Economic Research (ISER) at the UWI, Mona. While at ISER she collected oral histories of elders in rural Jamaicans a project that would later inspire her novel Louisiana. Encounters with the Black Power movement and women's liberation coupled with her early familial indoctrination to the importance of family have led Professor Brobder to pen novels that deal with the healing power of community.





### **Mr. Earl Jarrett**

Mr. Jarrett has been recognised for his sterling contribution to banking in Jamaica. He holds both a BSc. and MSc. in Accounting and is a Fellow of the Institute of Chartered Accountants of Jamaica. He has been the General Manager of the Jamaica National Building Society (JNBS) since 1999 and has also held leadership positions at the International Union of Housing Finance and has been Board Advisor to the Inter-American Dialogue Financial Services.

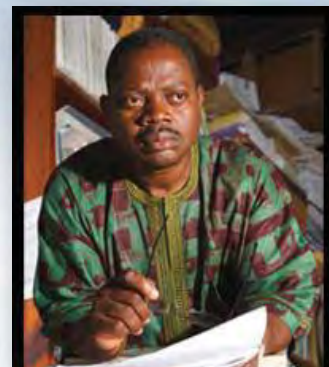


## Appendix I

## Professorial Appointments for the Academic Year 2010/2011



Nouredine Benkeblia, PhD  
**Professor of Crop Science**  
Department of Life Sciences



John Bewaji, PhD  
**Professor of Philosophy**  
Department of Language



Hopeton Dunn, PhD  
**Professor of Communications Policy  
& Digital Media**  
Digicel Foundation Chair in Telecommunications  
Policy & Technology Management



Mark Figueroa, PhD  
**Professor of Caribbean  
Political Economy**  
Dean of the Faculty of  
Social Sciences



Mitko Voutchkov, PhD  
**Professor of Applied  
Nuclear Physics**  
Department of Physics

## New Externally Funded Grants for the Academic Year 2010/2011

DONOR	PROJECT TITLE
Broadcasting Commission of Jamaica	Jamaica's Electronic Media Sector Content and Public Perception of the Broadcasting Commission of Jamaica
Caribbean Development Bank	The Provision of External Scholarships to 30 Final-year Student of the State University of Haiti to Complete their Degrees at the UWI, Mona Campus
Caribbean Health Research Council	<ul style="list-style-type: none"> <li>Locally Advanced Breast Cancer in Jamaica: Disease Characteristics and Response to Neo-Adjuvant Chemotherapy</li> <li>Urinary Leukotriene E4 in Patients with Homozygous Cell Disease</li> </ul>
CARIBSAVE	Creation of the CARIBSAVE Climate Change Risk Atlas (CCCRA)
Chemnitz University of Technology	The Replication of the Cross-Cultural Value of Children (VOC) Study in Jamaica
CLARO	Software Development Agreement
Culture Health Arts Sports Education Fund (CHASE)	Purchase of an Autoclave, Micro Count Liquid Scintillation Counter and Microscopes
Department for International Development	Strengthening Governance in Jamaica
Environmental Foundation of Jamaica	<ul style="list-style-type: none"> <li>Mitigating Crocodile Interactions: Is Relocation a Viable Management Strategy?</li> <li>Design and Implement a Communication Strategy for the Environmental Foundation of Jamaica</li> </ul>
European Union	Public Perception on Jamaica Constabulary Force in Selected Communities where Community Policing has been Implemented
Ford Foundation	Expansion and Strengthening of the Sexual Safety Initiative Programme at the Mona Campus and Surrounding Communities - Providing and Enabling an Environment for Sexual Health and Reducing the Risk of HIV/AIDS
Open Society Institute Foundation	Partial Funding for Scholarships for 30 Final Year Haitian Students of the State University of Haiti to complete their Programmes at the UWI, Mona Campus
Government of St Lucia	Capacity Building and Creation of an Enabling Environment for the Delivery of National Environmental Education & Public Awareness Programmes in St Lucia
HEART Trust/National Training Agency	To Determine Whether Career Advancement Programme (CAP) has Positively Impacted Beneficiaries by Minimizing the Risk of Youth Participation in Crime
Inter-American Development Bank (IDB)	Child Cohort Study
IDB thru' the Ministry of Youth, Sports & Culture	To Develop a Strategy for Mainstreaming Youth Development and Design and Implement a Social Marketing Campaign
International Centre for Tropical Agriculture (CIAT)	Adaptation by Agriculture Communities to Climate Change through Participatory and Supply Chain Inclusive Management
J Wray & Nephew Limited	Pollution Monitoring in a Body of Moving Water
Jamaica Racing Commission	Routine Testing of Samples taken from Race Horses

John D & Catherine T MacArthur Foundation	Supporting UWI's Natural Resource Conservation Efforts in the Cockpit Country and the Black River Lower Morass areas of Jamaica
Michigan State University	The Jamaican Birth Cohort Study 2011
Ministry of Education	Curriculum Development for the Alternative Secondary Transition Education Programme (ASTEP)
Ministry of National Security	<ul style="list-style-type: none"> <li>Training of Staff to Support Capacity Building in Research to Drive Evidence Based Policy Research Development</li> <li>Jamaica Constabulary Force (JCF) Public Perception Survey</li> </ul>
National Health Fund (NIH)	Infection Control, Changing the Structure, Transforming the Culture, Workshop
Oxfam Great Britain	<ul style="list-style-type: none"> <li>Feasibility Study on Social Intermediary in Jamaica</li> <li>Student Exchange Programme</li> </ul>
Shaw University	Shaw in Jamaica Minority Health International Research Training Programme
Sunnybrook Health Sciences Centre	A Clinical Study - Twin Birth Study
The Government of Jamaica	<ul style="list-style-type: none"> <li>Seismic Research</li> <li>Transformation of the Centre for Nuclear Sciences to the International Centre for Environmental and Nuclear Sciences</li> </ul>
The National Environment and Planning Agency (NEPA)	<ul style="list-style-type: none"> <li>To Implement Protection Measures for the Black River Lower Morass Area - a Site of High Conservation</li> <li>The Iguana Pilot Project - Control or Eradication of IAS Predator Populations in the Hellshire Hills and on the Goats Islands Respectively</li> <li>To Control and Manage the Lionfish Population in Jamaica</li> </ul>
The United Nations Food and Agriculture Organization	Improving the Diagnostic Capability of the Ministry of Agriculture & Fisheries through Capacity Building
The United States President Emergency Fund for AIDS Relief	Contribution towards the Purchase of a Blood Culture & Antibiotics Testing System (Bact/Alert and Vitek 2 Systems)
The World Bank	Evaluation of Information for Culturally Relevant Group Parenting Programmes on Early Childhood Development
Trans Jamaican Highway Limited	To Provide Consultancy and Maintenance Service for Equipment Installed at the Hunt's Bay Bridge (Formerly Causeway Bridge) to Monitor Seismic Activities
United Nations Education, Scientific & Cultural Organization (UNESCO)	<ul style="list-style-type: none"> <li>Media and Informational Literacy Survey among Teachers, in-service and in training, in four Caribbean Countries including Trinidad &amp; Tobago and Jamaica</li> <li>Workshop for Caribbean Journalists Reporting, Education, Science and Culture</li> <li>Sensitization Workshop on Technical Vocational Education and Training</li> <li>To Strengthen Education for Sustainable Develop (ESD) under the Framework of the United Nations Decade on Education for Sustainable Development</li> </ul>
University of Central Lancashire	Country Sing Project Phase 2
Vanderbilt University	Fogarty International Clinical Research Scholars Support Centre at Vanderbilt AAMC

## Comparative Student Registration for the Period 2008/2009 to 2010/2011

ON-CAMPUS STUDENTS	FULL-TIME			PART-TIME			TOTAL			2009-10	2008-09
	TOTAL	MALE	FEMAE	TOTAL	MALE	FEMAE	TOTAL	MALE	FEMAE	TOTAL	TOTAL
<b>UNDERGRADUATE</b>											
HUMANITIES & EDUCATION	1569	377	1192	358	92	266	1927	469	1458	2009	1864
LAW	265	60	205	0	0	0	265	60	205	194	62
MEDICAL SCIENCES	1882	464	1418	36	5	31	1918	469	1449	1719	1487
PURE & APPLIED SCIENCES	2053	969	1084	105	51	54	2158	1020	1138	2094	1835
SOCIAL SCIENCES	3024	890	2134	1308	390	918	4332	1280	3052	4232	3805
GENDER & DEVELOPMENT STUDIES	24	8	16	8	0	8	32	8	24	10	1
<b>TOTAL</b>	<b>8817</b>	<b>2768</b>	<b>6049</b>	<b>1815</b>	<b>538</b>	<b>1277</b>	<b>10632</b>	<b>3306</b>	<b>7326</b>	<b>10258</b>	<b>9054</b>
<b>DIPLOMA</b>											
HUMANITIES & EDUCATION	12	7	5	1	1	0	13	8	5	21	11
SOCIAL SCIENCES	8	1	7	12	2	10	20	3	17	28	34
<b>TOTAL</b>	<b>20</b>	<b>8</b>	<b>12</b>	<b>13</b>	<b>3</b>	<b>10</b>	<b>33</b>	<b>11</b>	<b>22</b>	<b>49</b>	<b>45</b>
<b>ADVANCED DIPLOMA</b>											
HUMANITIES & EDUCATION	1	0	1	7	0	7	8	0	8	66	17
MEDICAL SCIENCES	4	3	1	5	0	5	9	3	6	0	0
SOCIAL SCIENCES	1	1	0	23	4	19	24	5	19	42	4
<b>TOTAL</b>	<b>6</b>	<b>4</b>	<b>2</b>	<b>35</b>	<b>4</b>	<b>31</b>	<b>41</b>	<b>8</b>	<b>33</b>	<b>114 *</b>	<b>35 **</b>
<b>HIGHER DEGREES</b>											
HUMANITIES & EDUCATION	136	40	96	648	109	539	784	149	635	712	703
LAW	0	0	0	0	0	0	0	0	0	0	0
MEDICAL SCIENCES	496	174	322	118	23	95	614	197	417	568	569
PURE & APPLIED SCIENCES	177	73	104	229	141	88	406	214	192	419	394
SOCIAL SCIENCES	250	81	169	991	312	679	1241	393	848	1335	1384
GENDER & DEVELOPMENT STUDIES	12	3	9	18	1	17	30	4	26	23	23
GRADUATE STUDIES	0	0	0	1	1	0	1	1	0	4	3
<b>TOTAL</b>	<b>1071</b>	<b>371</b>	<b>700</b>	<b>2005</b>	<b>587</b>	<b>1418</b>	<b>3076</b>	<b>958</b>	<b>2118</b>	<b>3061</b>	<b>3076</b>
<b>SPECIAL ADMITTANCE<sup>1</sup></b>											
HUMANITIES & EDUCATION	19	6	13	44	14	30	63	20	43	74	40
MEDICAL SCIENCES	3	1	2	17	7	10	20	8	12	26	30
PURE & APPLIED SCIENCES	12	7	5	12	4	8	24	11	13	33	17
SOCIAL SCIENCES	34	15	19	66	20	46	100	35	65	50	97
GENDER & DEVELOPMENT STUDIES	0	0	0	0	0	0	0	0	0	1	0
<b>TOTAL</b>	<b>68</b>	<b>29</b>	<b>39</b>	<b>139</b>	<b>45</b>	<b>94</b>	<b>207</b>	<b>74</b>	<b>133</b>	<b>184</b>	<b>184</b>
<b>SUBTOTAL ON-CAMPUS</b>	<b>9982</b>	<b>3180</b>	<b>6802</b>	<b>4007</b>	<b>1177</b>	<b>2830</b>	<b>13989</b>	<b>4357</b>	<b>9632</b>	<b>13666</b>	<b>12394</b>
<b>NB: OFF-CAMPUS STUDENTS</b>	<b>597</b>	<b>82</b>	<b>515</b>	<b>806</b>	<b>124</b>	<b>682</b>	<b>1403</b>	<b>206</b>	<b>1197</b>	<b>1815</b>	<b>2020</b>
<b>TOTAL ON- AND OFF-CAMPUS</b>	<b>10579</b>	<b>3262</b>	<b>7317</b>	<b>4813</b>	<b>1301</b>	<b>3512</b>	<b>15392</b>	<b>4563</b>	<b>10829</b>	<b>15481</b>	<b>14414</b>
<sup>1</sup> This refers to Visiting/Exchange; Specially Admitted; Occasional and Not Applicable student registrations.											
* Includes 6 registrants in Pure and Applied Sciences.											
** Includes 14 registrants in Pure and Applied Sciences.											

## Graduates by Programme, Sex and Faculty/School for the Period 2009 to 2011

ON- AND OFF-CAMPUS STUDENTS	TOTAL	MALE	FEMALE	2010 TOTAL	2009 TOTAL
<b>UNDERGRADUATE</b>					
HUMANITIES & EDUCATION	516	96	420	588	678
MEDICAL SCIENCES	687	114	573	635	372
PURE & APPLIED SCIENCES	358	134	224	318	290
SOCIAL SCIENCES	924	235	689	893	847
GENDER & DEVELOPMENT STUDIES	0	0	0	0	0
<b>TOTAL</b>	<b>2485</b>	<b>579</b>	<b>1906</b>	<b>2434</b>	<b>2187</b>
<b>DIPLOMA</b>					
HUMANITIES & EDUCATION	10	5	5	11	10
SOCIAL SCIENCES	6	1	5	40*	77*
<b>TOTAL</b>	<b>16</b>	<b>6</b>	<b>10</b>	<b>51</b>	<b>87</b>
<b>ADVANCED DIPLOMA</b>					
HUMANITIES & EDUCATION	38	3	35	39	16
MEDICAL SCIENCES	0	0	0	0	0
SOCIAL SCIENCES	16	3	13	24	0
<b>TOTAL</b>	<b>54</b>	<b>6</b>	<b>48</b>	<b>68**</b>	<b>22**</b>
<b>HIGHER DEGREES</b>					
HUMANITIES & EDUCATION	228	42	186	219	200
MEDICAL SCIENCES	141	35	106	136	178
PURE & APPLIED SCIENCES	89	39	50	73	66
SOCIAL SCIENCES	440	148	292	412	388
GENDER & DEVELOPMENT STUDIES	1	0	1	4	3
GRADUATE STUDIES	0	0	0	0	0
<b>TOTAL</b>	<b>899</b>	<b>264</b>	<b>635</b>	<b>844</b>	<b>835</b>
<b>TOTAL GRADUATES</b>					
HUMANITIES & EDUCATION	792	146	646	857	904
MEDICAL SCIENCES	828	149	679	771	550
PURE & APPLIED SCIENCES	447	173	274	396	362
SOCIAL SCIENCES	1386	387	999	1369	1312
GENDER & DEVELOPMENT STUDIES	1	0	1	4	3
GRADUATE STUDIES	0	0	0	0	0
<b>TOTAL</b>	<b>3454</b>	<b>855</b>	<b>2599</b>	<b>3397</b>	<b>3131</b>

\* Includes certificate graduates.

\*\* Includes Pure & Applied Science graduates.

## Appendix V

# Those Whom We Lost

During the 2010/2011 academic year, the UWI community mourned the passing of the following persons:

### **Professor Emeritus Alston Barrington Chevannes**

“Barry” to his friends, cherished colleagues and fellow Faculty members.  
He was Director of the Centre for Public Safety and Justice, and former Dean of the Faculty of Social Sciences.

### **Professor Emeritus Ralph Carnegie**

former Deputy Principal and Dean of the Faculty of Law, Cave Hill Campus.

### **Mr. John Maxwell**

Journalist, Environmental Activist and Lecturer at the Caribbean Institute of Media and Communication (CARIMAC).

### **Mrs. Simone Earle-Barrett**

PhD student in the Department of Basic Medical Sciences, Faculty of Medical Sciences.

### **Mr. Collin Craig Chambers**

Student in the Department of Management Studies, Faculty of Social Sciences.

### **Ms. Rita Small**

Retired Office Attendant in the Department of Microbiology, Faculty of Medical Sciences.

### **Ms. Admirah Grant**

Retired Senior Office Attendant in the Office of Placement and Careers Service, Office of Student Services and Development.

### **Professor Emeritus John Homi**

Department of Surgery, Radiology, Anaesthesia & Intensive Care.

### **Mr. Roderick Reid**

Student in the Faculty of Law at the UWI, Cave Hill Campus

### **Ms. Norma Lewis**

Research Nurse at the Tropical Medicine Research institute: Sickle Cell Unit

### **Ms. Monique Gourzoung**

Business Analyst in the Office of the Campus Bursar



# More Scenes - Official opening of the Barry Chevannes Fathers Inc. Resource Centre

